

1950
1951
1952
1953
1954
1955
1956
1957
1958
1959
1960

Gc
977.801
L64elcn
1180159

M. L.

GENEALOGY COLLECTION

ALLEN COUNTY PUBLIC LIBRARY



3 1833 02606 0118

CEMETERY RECORDS
NORTHWESTERN LINN COUNTY,
MISSOURI

Compiled by

Elizabeth Prather Ellsberry
720 $\frac{1}{2}$ Vine St.
Chillicothe, Mo.

Located North of Leadville, Missouri

1180159

- Ailor: Infant son of J. C. and R. (No dates); John C., 1847-19; Betty Elizabeth, his wife, 1854-1924; Zula Mae, dau. of M. L. and A. M., 1915-1916; Edith, wife of Luke, died February 17, 1887, aged 80 yrs., 10 months, and 7 days; Belva, dau. of J. C. and Fattie, died September 12, 1889, aged 8 mos. and 21 das.
- Acree: Paul E., January 5, 1931-March 19, 1935; Hubert P., Pvt. 759th H. P. En., Berlin, Germany, September 14, 1928-August 14, 1946.
- Abell, Vella M., died October 17, 1895 aged 25 years, 10 mos., and 21 das.
- Adams, John Agnes, 1833-September 1, 1899; W. T., 1871-1952; Rosanna, 1880-1949; William Riley, October 17, 1831-January 8, 1898
- Anderson, Frankie E., son of J. J. and A. E. February 2, 1890-July 14, 1891
- Brooks, A. J., July 12, 1902-March 8, 1954
- Pailey, Alice E., 1870-1952; Verda M., 1900-1932; Mary E. Lowry, September 27, 1857-April 17, 1924; Edward T. (No date); Infant son, of S. W. and A., born and died, April 13, 1882; Minerva Lee, July 3, 1879-November 11, 1879
- Freuer, George W., 1906-1942; Minnie W., 1913-19; Bowe, Johnnie William, 1926-1939
- Bentley, Dollie, dau. of J. S. and M. A., died January 1, 1881, aged 1 year, 1 mo. and 10 das.
- Billings, James B., August 11, 1887-October 13, 1917; Carannah, February 6, 1892; Infant son of J. W. and C., December 17, 1911-December 31, 1911.
- Belshee, William, died February 27, 1875; Nancy, wife of Wm. born March 17, 1809; Emily, wife of W. J., March 17, 1831-August 27, 1873; William J., December 25, 1840-January 19, 1917; Elizabeth E., wife of W. J., June 6, 1849-July 31, 1917; Thomas H., son of W. J. and E. K., died June 13, 1880, aged 3 yrs., 7 mos. 29 das. Nancy F., dau. of W. J. and E. K., died October 16, 1879 aged 1 year, 11 mos., 21 das.
- Felche, Thomas J., died February 15, 1868, aged 37 yr., 10 mo. 13
- Erinager, Margaret J., dau. of Wm. and M., died July 6, 1852, aged 9 yr., 5 mo., and 5 das.
- Furnett, Phillip, died October 12, 1859, aged 67 yr., 10 mo. 13
- Brown, T. J., died February 4, 1883, aged 54 yr., 5 mo., 9 da.; J. D., son of A. J. and D. G., died June 1, 1883, aged 27 yr., 7 mo., and 13 das.; D. C., wife of A. J., born April 12, 1837
- Eurus: Mary, died March 1, 1885, 43 yrs.; Thomas, died October, 1885, 44 yrs.
- Erost: Maude Adelia, September 22, 1897-March 6, 1953; Anna Feth, died November 30, 1956; Theodore, February 28, 1857-January 25, 1937; Emma, August 8, 1859-November 4, 1946.

45-00
 1-10-00
 1-10-00



Botts
(2)

Botts: John H., September 22, 1839-August 10, 1913; Sarah Heckman, his wife, October 7, 1854-February 7, 1930; Frank S., born June 24, 1877; M. Agnes Rutherford, his wife, November 8, 1876-April 15, 1929; Belva Humphrey, wife of Frank S., January 19, 1884-March 22, 1941; Arlie, October 19, 1945, 70 yrs.; Osmo, son of Joseph and Mary R., April 24, 1888, 20yrs., 5 mos., and 21 das.; Elizabeth, wife of Seth, died September 24, 1907, aged 91 years; Nellie, dau. of G. W. and S. E., died May 18, 1888, 1 yr., 4 mos., 26 das.; Oley, son of G. W. and S. E. died November 4, 1898, aged 21 yr., 10 mos., 29 das.; Joshua, 1811-1878; Mariah, wife of Seth, January 5, 1815-July 18, 1880; Rebecca A. G., wife of John W died November 15, 1870 aged 35 yr., 2 mos., 14 das.; Bertha Gertrude, dau. of J. R. and L. A. (No date); Seth, March 6, 1813-March 5, 1901; Elijah H., son of J. and E., January 4, 1864, aged 18 yr., 27 das.; J. J. December 11, 1841-March 13, 1929; Mary E. Wiley, his wife, September 20, 1843-December 27, 1912; W. J., son of J. J. and Mary, July 18, 1866-January 11, 1870; Infant son of J. J. and Mary, July 1, 1867; George S., October 3, 1849-June 10, 1912; Thomas L., May 1, 1837 30 yr., 4 mos., 9 das.; Smith (Stone broken and lost); Thomas, died January 9, 1874, aged 88 years; Julina F. dau. of M. H. died September 10, 1872 aged 4 years, 2 mos., 10 das.; Edward M., September 17, 1870-July 25, 1872; Martha, wife of Thomas, died September 9, 1877, aged 88 years, 1 mo., 10 das.; Thomas, died April 25, 1852, aged 62 years, 8 mos., 11 das.; Ada B., dau. of Mr. and Mrs. J. J., died October 28, 1875; aged 3 years, 9 mos., 15 das.; Mrs. J. J., died October 28, 1875; Sallie, dau. of Mr. and Mrs. J. J., died October 28, 1875, aged 1 year, 9 mos., 26 das.; John Thomas, son of Seth and Elizabeth, October 28, 1853-November, 1954; Seth, died September 17, 1872, aged 86 years, 8 mos., 16 das.; Nancy, wife of Seth, died July 18, 1840; Nancy J., dau. of John and Elizabeth, November 20, 1844-January 20, 1945; Sarah H., dau. of John and Elizabeth August 20, 1837-January 27, 1842; Mary E., dau. of John and Elizabeth, May 19, 1852-July 1, 1854; Jefferson H., son of Seth and H. L., January 12, 1817-March 13, 1847; Inf. child of Seth and H. L. October 6, 1854-October 23, 1854; Elizabeth F., dau. of Seth and H. L. died March 30, 1839, aged 20 mos. Inf. dau. of J. H. and R. A. G., died October 21, 1870.

Bird, F a Herriman, dau. of Dennison and Lydia, died November 23, 1841, aged 3 yrs., 12 das.

Couch, Daniel, died January 19, 1878, aged 34 yrs., 9 mos. 14 das.



- Curtis, William P., February 27, 1891-March 31, 1921; Abi E., his wife, August 5, 1891; Harley H., November 14, 1879-December 13, 1918; John, 1872-1953; Nellie K., 1872-1941; Thomas S., 1906-1912; May B., 1900-19; A. S. July 5, 1830-April 30, 1909; Sarah E. Thorne, his wife, May 26, 1848-1924
- Courtney, Sarah E., 1849-1933. Cook, Bert William, 1913-1936
- Crawford, Mary J., wife of L. P., died July 16, 18979, 33, 8, 28
- Coonley, Helen A. Chapman, 1908-1932
- Chapman, E. Annette, dau. of H. L. and W. H., September 13, 1937
 Jerry L., son of H. L. and W. H. January 14, 1941
 James F., October 7, 1873, aged 58 yrs., 11 mos.
- Duncan, W. Haden, 1879; May Susan, 1883-1932; Joseph T., 1869-1953; Ruth A., 1875-1952; Manfred, son of J. T. and R. A., May 3, 1907-August 10, 1907; T. G., March 5, 1902, aged 78 years, 6 mos., 3 das.; Mildred, wife of T. G., died January 13, 1894, aged 57yrs., 2 mos. 3 das.
- Dicks, Nancy Jane, 1855-1942
- Edwards, George W., November 18, 1865-January 10, 1946;
 Mildred, February 27, 1872-May 25, 1937; David Edward, January 4, 1900-64yrs., 10 mos., 20 das.; Eliza C., March 27, 1840-January 17, 1919.
- Egan, Sally M., November 25, 1943 aged 23 yrs, 7 das.
- Engelcian, Hubert, son of J. V. and E. A. J., October 29, 1899;
 September 11, 1902; Mary, dau. of J. V. and E. A. J., born and died September 18, 1895
- Emerson, Nancy, died December 3, 1863, aged 67 yrs., 8 mos. 27
 James, died November 9, 1863, aged 73 yrs., 11 mos. 28
- Evans, Walter E., 1876-1946; Sarah, wife of W. S., died November 21, 1881, aged 79 yrs., 8 mos., 24 das.; T. D., September 6, 1844-July 23, 1918; Nancy O., his wife, June 20, 1849-October 9, 1930; Infant of A. O., and Maggie, June 24, 1909-December 16, 1909; Mary E., January 11, 1899, aged 35 yrs., 6 mos., 11 das.; William A., December 8, 1899, 27 yrs., 9 mos., 8 das.
- Ginther, Allie A., 1857-1951; Eva May, 1880-1953; Albert A. 1908-1924
- Gooch, Nancy, 1813-March 10, 1869; Roland, July 22, 1847-October 20, 1922; Ellen F., his wife, March 19, 1952-July 18, 1929. Green, Lenna T., May 19, 1957, aged 81.
- Goodin, Minnie Lee, dau. of L. and S., Died September 14, 1881
- Gordon, Albert E., died November 29, 1883, aged 1 yr., 9mo. 12d
 Elmore, died October 4, 1872, aged 11 yrs., 2 mos. 4 das. Sons of T. P. and H. E.
- Gish, John, Sr., died July 9, 1876, aged 91 yrs., 8 mos., 28 d.
- Griswold, Warren, son of A. A. and E. A., died October 10, 1877 aged 7 mos., 26 das.; M. Adella, wife of Albert, May 2, 1879; William H., died 1872 aged 51, 9, 4.
- Harris, Emily M., February 26, 1819-December 16, 1873
- Harding, Samuel T., 1876-1956; Mildred M., 1879-1939.
- Hart, Ethel E., wife of C. E., July 27, 1882-December 26, 1904.



- Hicks, Clyde F., 1908-1951; Myrle L., 1902-19; John William, died November 4, 1955, aged 70 yr., 8 da., 6 mos.; Phillip, died November 26, 1909, aged 80 years; A. J., died December 19, 1900, aged 66 years; Clarence, son of J. F. and S. C., died October 8, 1890, aged 22 das.; Henry, died January 15, 1889, aged 65 years; Sarah C., wife of J. F., April 1, 1849-December 1, 1926; Joseph F., November 11, 1846-May 15, 1928; Ora, 1882-1934; Lillie, 1876-19; Leonrard, August 15, 1877-January 6, 1949; Rebecca, wife of William, died April 16, 1878, aged 77 years; Milliam, died October 20, 1870, aged 72 years. No dates given for Thomas, William, Harvey.
- Hopson, H. F., January 14, 1831-July 16, 1904; John T., March 31, 1882-October 1, 1908; William H., August 24, 1853-January 9, 1928; Fannic A. H. Eotts, his wife, March 2, 1856-August 12, 1907.
- Harvey, Mary E., April 6, 1901, aged 59 years, 4 mos., 6 das., William, died March 17, 1885, aged 76 years, 6 mos., 6 das.; Martha P., wife of William, died September 20, 1876, aged 64 years, 6 months, 10 das.; Lucinda, wife of L. F., died July 28, 1878, aged 26 years, 8 mos., 14 das.; Rosa Lee, dau. of L. F. and Lucinda, died November 7, 1899; aged 2 years, 9 mos., 25 das.; Rebecca, wife of Basil, died September 18, 1872, aged 70 years.; Mrs. H. J., wife of G. W., died at her home in Meadville, December 25, 1898, aged 49 years, 10 mos. 7 das.; W. P., August 9, 1838-September 5, 1876; Lucy A., his wife, January 18, 1838; Elijah, June 14, 1805-February 26, 1887; Jane, wife of Elijah, September 29, 1811-November 25, 1892; Charles A., son of J. E. and J., died April 28, 1874 aged 8 mos., 23 das.
- Harter, Nettie F., dau. of J. F. and S. J., died March 8, 1871 aged 2 yrs., 5 mos., 17das.; James, son of J. F. and S. J., died April 6, 1878, aged 1 year, 7 mos., 6 das., George E., son of J. F. and S. J. died August 17, 1883, aged 1 year, 11 mos., 27 das.
- Jones, Homer E., son of T. J. and J., died May 21, 1888 aged 5 years, 11 mos., 7 das.; Milton, 1812-1905; Teresa, 1815-1915; Nancy C., 1842-1919; Leonidas H., 1872-1936.
- Jenkins, Shelby E., son of A. and M., died May 30, 1869, 11,6,23
- Johnson, Alice A. Curtis, 1883-: P. B., died June 23, 1899, aged 32 year, 17 das.
- Lonyan, Mary Eller, 1866-1939
- Lay, Dorothy Marie, dau. of Thomas and Nina, October 15, 1918-December 16, 1918. Landree, Rapheail, September 7, 1937-August 8, 1892.
- Leavell, J. H. March 18, 1840-September 21, 1914; Martha J., his wife, November 23, 1849-December 28, 1932; Nancy J., wife of A. D. (Stone broken); Henry, son of E. D. and N. J., died September 8, 1869, aged 1 yr., 6 m.5d.

13

Littrell, David J., December 18, 1893-75 years, 5 mos., 28 das.
 Joseph, died March 31, 1890-66 years, 2 mos., 4 das.
 James, son of Joseph and D. R., died August 13, 1860
 aged 2 mos., 2 das.; Laura L., dau. of Joseph and
 D. R., died February 25, 1857, aged 8 mos., 7 das.;
 Flora H., dau. of Joseph and D. R., died March 25,
 1864, aged 9 mos., 20 das.; Melvina, wife of James,
 June 27, 1811-March 23, 1878; James, February 1, 1813-
 March 6, 1884. James L. and Melvina were married
 September 4, 1828; Sarah Elnetty, wife of David J.,
 died January 1, 1862 aged 41 years, 2 mos., 23 das.;
 Sarah, wife of D. G., died March 29, 1855 aged 32
 years, 3 mos., 16 das.; Mary S., dau. of Sarah and
 D. G., August 29, 1850, aged 7 mos., 15 das.; Mar-
 garet J., dau. of Sarah and D. G. died May 13, 1854,
 aged 7 mos., 5 das.; Hartha E., dau. of Sarah and
 D. G., died September 18, 1846, aged 9 mos., 6 das.
 Sarah Jane, dau. of J. H. and A. E. died October 31,
 1882, aged 2 years, 9 mos., 24 das.

Lahman, Josiah A., 1861-1935; Emma A., 1864-1941; Julian R.,
 Co. C, 23rd Inf. 2nd Div., born August 26, 1893, died
 Argonne Forrest, November 2, 1918; Forrest, November 2,
 1918; Hina C., dau. of J. A. and E. A., died August
 29, 1904, aged 1 year, 10 mos., 26 das.

Lowry, James A., November 11, 1862-September 19, 1949; A. H.,
 died April 8, 1904 aged 70 years, 11 mos., Julia, wife
 of A. H. youngest dau. of John Gish, Sr., died October
 11, 1899 aged 72 years, 4 mos., 16 das.; John S.,
 April 5, 1865-March 21, 1930; William W., December 30,
 1867-March 22, 1930; Emma, March 21, 1859.

Mellon, Flora H., dau. of F. A. and I. H., died August 7, 1889,
 aged 1 year, 3 mos., 1 da.

Merrell, Elmer Jackson, Missouri, Pvt. 356 Inf., 89 Div.
 November 6, 1917; Wilbert W., 1868-1922; Elgie, dau.
 of Robert and Lizzie, November 3, 1896-August 14, 1900;
 Rebecca Jane, 1870-1918; Ernest E., 1901-1918.

Minor, Edward M., 1868-1938; Lillian E., 1884-1936

Martin, Vashtie, March 8, 1899-aged 69 years; 9 mos., 7 das.

Nikols, Myrtle, January 22, 1883-November 23, 1891

Maple, David R., May 19, 1871; 24 years old, buried at Arolla,
 Mo.; Sarah A., died February 21, 1899, aged 59 years,
 3 mos., 2 das.; Laura E., dau. of D. R. and S. A. died
 December 2, 1880.

McCall, Margaret; Thomas G., son of T. D. and M. A. January 29,
 1882-August 24, 1900.

Norman, J. Lindley, 1878-1954; Johnnie, son of G. and J. L.,
 September 19, 1900-March 14, 1901; Byron C., 1902;
 Amy Faye, 1900-1956; James C., 1924; Donald F., 1932-
 1935.



- Ogan: Irvin, 1804-1887; Rebecca, his wife; 1818-1882; Ira I., son of Dr. E. F. and L. A., July 14, 1836-June 5, 1906; Lucy A., wife of E. F., died September 1, 1890, aged 26 years, 9 mos., 20 das.; R. A., 1855-19; Joseph, his son, 1888-1918; Alvin, his son; Missouri, Pvt. 45 Inf., 9th Div., W. V. I., February 5, 1894-November 17, 1918. Georgia, dau. of N. and G. E., died January 11, 1900, 8 mos., 17 das.; Nathaniel, 1868-1941; Gertrude E., 1873-1925.
- Palmer, Philip E., May 14, 1878-October 31, 1952; Joseph A., 1894-1951; Edna Lota, 1895-19; John P., 1856-1932; Kate, 1858-1938; Charles C., 1889-1890.
- Prather, C. C., 1852-1947; Haud A., 1878-1954
- Post, Peter, died February 14, 1879 aged 44 yrs., 10 mos., 2 da.
- Patterson, Luella, wife of J. H., March 19, 1884, aged 25 years, 6 mos., 8 das.; Cordelia J., 1864-1944; John H., 1852-1936; Rachel F., wife of J. H., died December 2, 1897 aged 31 years, 8 mos., 24 das.
- Pridemore, William H., 1907-1944
- Pearman, Jonathan R., January 18, 1834-July 23, 1913; Alvira, his wife, September 16, 1844-July 24, 1929; James H., August 26, 1869-May 7, 1942; Alice, his wife, June 23, 1866-January 31, 1929.
- Riggle, Myrtle O., dau. of E. F. and J. F., May 16, 1900-September 14, 1901.
- Rocco, Richard Van, Ho. Cpl. 354th Inf., 89th Div., W. V. I., December 6, 1894-June 8, 1947; A. R., 1875-19; Ethel L., 1880-1948; Martha C., 1907-1908; G. F., October 21, 1860-November 9, 1902; Josephine, dau. of G. F., May 10, 1901-November 30, 1920; Pollic, wife of David P., July 20, 1818-August 13, 1899; Martha E., dau. of D. P. and Mary, died January 17, 1873, aged 11 years, 2 mos., 21 da.
- Ross, Mary A., wife of G., died September 18, 1887, 72, 5, 21.
- Salisbury, Edwin E., 1859-1934; Nancy M., 1870-19; Infant dau. of E. E. and M. H., died May 4, 1914; Tola May, dau. of E. E. and M. H., died July 1, 1912.
- Schooler, Mildred May, dau. of J. D. and H. A., December 26, 1897, aged 1 year, 11 mos., 19 das.
- Simmons, Joel E., March 4, 1851-January 20, 1912; Clara E., February 27, 1855-July 22, 1919; Pluma Fay, August 16, 1890-February 3, 1916.
- Schlepphorst, Nancy Evans, December 29, 1917-May 5, 1957.
- Sutton, Peggy Ann, July 4, 1938
- Smith, Archibald I., June 20, 1881, aged 49 years, 6 mos., 1 da. Charles, died September 19, 1879, aged 17 yr., 8 mo., 15 da. Lillie, died July 2, 1880, aged 18 years, 5 mo., 28 da. Rosannah, died July 31, 1880, aged 21 years, 11 mo., 26 da. Unie A., died August 31, 1882, aged 28 yr., 5 mo., 21 da. (The last four were children of A. B. and M. J.)

1. The first part of the document discusses the importance of maintaining accurate records of all transactions and activities. It emphasizes that this is crucial for ensuring transparency and accountability in the organization's operations.

2. The second part of the document outlines the various methods and tools used to collect and analyze data. It highlights the need for consistent data collection procedures and the use of advanced analytical techniques to derive meaningful insights from the data.

3. The third part of the document focuses on the role of technology in data management and analysis. It discusses how modern software solutions can streamline data collection, storage, and processing, thereby improving efficiency and accuracy.

4. The fourth part of the document addresses the challenges associated with data management, such as data quality, security, and privacy. It provides strategies to mitigate these risks and ensure that the data remains reliable and secure throughout its lifecycle.

5. The fifth part of the document concludes by summarizing the key findings and recommendations. It stresses the importance of a data-driven approach in decision-making and the need for continuous monitoring and improvement of the data management process.

- Sallee, Ruth G., 1875-1955; Dudley, November 11, 1872; Ida B., his wife, December 25, 1874-October 7, 1913; Luther Peery, April 10, 1860-March 7, 1940; Ida May, November 18, 1867-March 10, 1950; Douglas, November 11, 1872-April 28, 1952; William O., 1845-1921; Elizabeth J., his wife, 1847; Bessie, dau. of W. O. and Elizabeth, February 22, 1890-June 9, 1903.
- Springer, Floy Wm., son of J. F. and Joanne, died August 21, 1901, aged 2 year, 4 mos., 21 das.; Frederick William, September 10, 1823-April 9, 1904; Mary Sophia, his wife, October 9, 1823-January 21, 1916; Frederick Theodore, 1865-1941; Joe Anna, September 13, 1866-April 7, 1944; John Eldore, November 28, 1858-March 25, 1944.
- Sidebottom, William A., son of Jas. H. and S. E. April 27, 1872- aged 1 year, 18 mos.; Nancy E., dau. of Jas. H. and S. E., August 29, 1877, aged 7 years, 2 mos., 20 das. James, son of Jas. H. and S. E., December 2, 1897, aged 25 years, 4 mos., 10 das.; Joseph C., September 8, 1874-March 18, 1926; James H., 1840-1884; Sarah E., 1851-1935; David G., 1877-1919; Rebecca H., 1885-1931; Willa, died September 27, 1941; William W., 1849-1920; Mary J., his wife, 1852-1912; Emma Est ella, dau. of W. A. and M. J., died November 8, 1882, aged 7 mos., 16 das.
- Selleck, Edwin H., son of L. H. and L., August 24, 1916-February 1, 1917; Howard O., September 10, 1916-May 24, 1935.
- Swain, Ellsworth, 1878-1954; Lucy A. Brooks, his wife, 1877-1954; Infant son, 1908; Orville F., 1907; Glea, 1910.
- Garber, Cordie, 1900-1918, dau. of Ruth G. Sallee; Mary E. Stolblugh, wife of Owen, 1897-1922.
- Stolplugh, Herbert E., 1918-1920; William C., January 21, 1865-November 12, 1902; Elizabeth, his wife, February 24, 1865-December 25, 1920; children of W. G. and S. E.: Carrie M., July 18, 1886-June 23, 1889; William Earl, January 27, 1883-February 3, 1901; A. Frank, 1893-1921; Foulah F., 1892-1919.
- Catterley, Leona D., son of A. D. and C. F., died June 26, 1886, aged 1 year, 8 mos.
- Famer, Joseph, 1814-1887; Malinda, 1808-1885; Malinda J., 1853-1886.
- Thompson, Fannie A., dau. of T. and T., July 25, 1861, 1 yr., 9 mo.
- Tracy, Calvin D., 1874-1939; Ethel, 1879-1953.
- Thomas, John L., May 9, 1901, aged 65 years, 2 mo., 17 da., Margery J., wife of J. L., died January 31, 1919, aged 82 years, 4 mo., 10 das.; George S., July 2, 1869-January 13, 1895; Clara May, dau. of J. L. and M. J., died March 13, 1877, aged 2 mo., 17 da.; Carrie Belle, dau. of J. L. and M. J., died December 1, 1874- 2 years, 4 mo., 2 da.; William A., 1830-1919; Sarah, his wife, 1833-1911.



()

Thomas, Lillianis, July 12, 1889-December 29, 1893; Evlanian, May 11, 1893; Walters, son of W. R. and S., November 18, 1893, aged 22 years, 25 das.; Charles L., 1851-1932; Martha A., 1853-1934; Lola May, dau. of M. L. and H.H. died September 29, 1893, aged 7 years, 7 das., Newton Linn, April 30, 1859-January 16, 1940; Hannah May, November 5, 1859-August 6, 1935; Gertrude, 1896-1918, dau. of Ruth G. Salico; Rosie J., dau. of H. and F. H. August 10, 1876-March 2, 1877.

VanDyke, Hable I., 1885-1936; Ione Irene, December 23, 1913-December 28, 1913; Inf. dau. and son of D. W. and M. I. July 29, 1910.

Van Syoc, Lloyd, son of O. C. and L. A. January 17, 1897-August 7, 1903.

Warren, wife of C. A., died November 7, 1881-33 years, 26 da.

Wenas, Lola F., dau. of O. and M. L., November 23, 1877-8 & 13d.

Wells, Joseph, Co. H., 2nd Inf. Mex. ar, born December 10, 1823 Catherine, wife of Joseph, April 1, 1822-October 2, 1889.

Wright, Grover, son of C. G. and H. P., died 1890, 9 mos. 6 das. Mary H., dau. of C. G. and H. P., November 24, 1887-1893

Wasson, Francis H., 1859-19; Rachel H., his mother, 1817-1886.

Winters, Mrs. Ida Jane, dau. of S. and Jemima, died October 8, 1875, aged 1 year, 18 das.

Wiley, John G., September 20, 1843-August 8, 1920; Mary J., his wife, 1852-1938; Susan, dau. of John Gish, Sr., and wife of Augustine, May 24, 1816-November 14, 1876; Augustine, October 11, 1814-August 12, 1901; John H., 1885-1895, son of H. G. and wife; Minnie E., 1884-1885, dau. of H. G. and wife; George A., son of Augustine and Susan, December 29, 1845-January 29, 1862.

White, Martha Chalfant Reece, 1858-1938; son, Thomas P. Chalfant, 1887-1902.

Walkup, Rev. John, November 29, 1818-April 22, 1901; Elizabeth A., wife of Rev. John, December 4, 1823-September 25, 1880; Joseph T., February 27, 1850-April 3, 1931; Mary L., wife of J. T., June 5, 1852-July 25, 1910; children of J. T. and H. L.: Mary E., 1877-1879; James A., February 21, 1872-November 14, 1895.

Wair, Dr. Edward F., 1877-1948; Adella E., 1879-1950.

Watson, David Anthon, died May 19, 1905, aged 80 years; Mary, his wife, died August 3, 1894, aged 70 years.; Mary L., wife of D. H. W., February 21, 1872-September 12, 1892; children of D. H. and M.: Charley V., July 5, 1858-September 12, 1860; Thomas, February 1, 1860-November 22, 1875; Ellis E., December 7, 1865-November 29, 1892.



Morris Chapel

Located on the northeast quarter section 4, township 50, west of Purdin, Mo. The church which was named after Brother Thomas Morris, who donated $1\frac{1}{2}$ acres of ground for the church in perpetuity.

- Alexander, William T., son of J. P. and P. H., died February 9, 1893, aged 4 yrs., 5 mos., 2 das.; Thomas B., died March 26, 1895, aged 62 yrs., 2 das.; Elizabeth A., wife of T. F., died July 6, 1896, aged 64 yrs., 13 das.; Alonzo W., son of T. F. and E. A., died January 16, 1893, aged 21 yrs., 4 mos., 10 das.; Eldridge C., son of T. F. and E. A., died August 25, 1895, aged 1 yr., 2 mos., 19 das.; William R., October 30, 1851-November 16, 1925; Permelia H., April 6, 1854-November 24, 1944; Virgil, son of E. G. and M. P., died October 10, 1912, aged 11 yrs., 3 mos., 21 das.; Elmer, 1877-; Millie, 1880-1936; Wallace E., June 28, 1882-July 27, 1910; Alfred H., 1891-1917; Louisa E., 1859-1934.; Maggie P., dau. of A. H. and L. E., died August 14, 1906, aged 22 yrs., 5 mos., 3 das.
- Arnold, Martha, wife of Larnah, died April 29, 1888, aged 23 yrs., 5 mos., 19 das.; James, died October 25, 1895, aged 41 yrs., 7 mos., 3 das.; Roberta, died December 5, 1901 aged 18 yrs., 2 mos., 25 das.
- Adams, Eliza H., January 20, 18-December 7, 1877; Hiram, October 10, 1820-June 30, 1904.
- Eaker, Lucy Ellen, 1856-1938
- Earnes, George A., April 9, 1831-September 9, 1922; Susan J., April 16, 1836-March 15, 1920; Robert A., son of G. A. and S. J., died February 6, 1880, aged 6 mos., 26 das.
- Faskett, John F., 1869-1946; Permelia E., 1871-1955; Hiram A., 1895-1957; Hamie P., died September 20, 1956, aged 80 yrs., 5 mos., 7 das.; Owen S., son of George P. and M. E., August 24, 1887-November 21, 1888; George P., October 20, 1845-March 19, 1888; Mary E., April 26, 1847-February 15, 1920; Owen, son of J. B. and P. E., September 30, 1893-October 27, 1893.
- Felcher, Millie A., 1862-1937; Marion, 1858-1934; Inf. son of M. A. and H., December 26, 1882-January 8, 1883; Inf. dau. of H. A. and H., December 31, 1883-January 1, 194-; Francis Fay, April 1, 1893-September 3, 1893.
- Cooper, Homer D., 1876-1932; Elizabeth A., 1876-; George J., 1914-1923.
- Crookshank, John R., 1860-1932; Mattie S., 1865-1946; Eugene Sayers, January 21, 1898-September 13, 1908; Fossie, December 13, 1895-August 12, 1909.
- Creason, Allie, 1889-1930; Mollie, 1868-1910; Lena A., March 24, 1903-May 6, 1929.



- Dennis, Mary P., 1891-; George W., 1871-1927; Orville E., son of R. C. and Effie, 1904-1905; Orville E., son of R. C. and Effie, 1904-1905; Robert E., 1874-; Edith, 1880-1932.
- Divine, James S., May 28, 1853-July 8, 1894; Charles L., November 12, 1822-February 9, 1878.
- Goins, Sarah F., wife of E. T., died July 17, 1889, aged 22 yrs. 7 mos., 8 das.
- Gooch, Alexander Jenkins, son of L. and H. M. died August 18, 1913, aged 8 mos., 27 das.; Thora H., 1911-1934; Melvin C., November 21, 1912-September 6, 1925.
- Hisol, Irvin, 1876-1908; Cora Belle, 1874-1940; Mary Gladys, 1902-1916; Sampson, September 4, 1828-March 29, 1901; Nancy J., wife of S., April 15, 1837-June 3, 1890.
- Hutchins, Sallie, wife of G. M., October 16, 1860-August 9, 1886.
- Hoover, Lucy, wife of L. A., dau. of W. E. and Ann Stultz, died January 16, 1901, aged 19 yrs., 3 mos., 4 das.; Ethel E., dau. of L. A. and Lucy, died February 16, 1902, aged 1 yr., 7 mos., 25 das; Inf. son of E. A. and Susie, died March 15, 1918.
- Harvey, Mattie S., wife of J. G., died December 16, 1904, aged 25 yrs., 14 da.
- Jerome, Sallie H., wife of Walter, May 8, 1884-December 27, 1908; Thora, dau. of W. and S. H., died October 12, 1909, aged 1 yr., 3 mos, 29 das.
- Kimbrough, Ralph, 1890-1957; Anna H., December 16, 1868-February 24, 1927; Owen, October 3, 1858-January 31, 1942; Henry, son of Thos. H. and Mary E., died December 14, 1905, aged 25 yrs., 11 mos., 20 das.; T. H., died August 12, 1897, aged 76 yrs., 6 mos., 16 das.; Mary E., his wife, died March 29, 1914, aged 80 yrs. 4 mos., 2 das.; Joseph E., died October 15, 1906, aged 47 yrs., 7 mos., 5 das.; Dovie, his wife, (No dates); Thomas H., 1870-1950; Mae A., 1889-1931.
- Kingsolver, James H., April 11, 1873-September 15, 1942; Margaret L., born December 20, 1875-; Charles R., 1931-1931; Marvin M., 1930-1930; M. Hope, 1885-19; William T., 1871-1932; Inf. son of William T. and Hope, died April 16, 1917; John F., August 27, 1842-September 29, 1930; Nancy C., August 14, 1848-September 1, 1930.
- Lanc, Leah, February 21, 1824-January 27, 1906; Reuben, May 25, 1864-February 11, 1893; Robert L., 1862-1923; Nancy E., 1862-1943.
- Long, Joseph E., September 4, 1868-1957; Martha L., May 23, 1870-November 18, 1946.
- McCullum, Mary A., dau. of F. and H., died November 11, 1882, aged 3 yrs., 7 mos., 24 das.
- Myers, Daniel Nile, son of D. F. and L. V., February 14-28, 1905; Herman F., Jr., 1921-1927.



- Moore, J. R., December 30, 1856-March 18, 1922; J. W., December 20, 1870-November 30, 1918; Willard, April 2, 1895-66 yrs 3 mos., 26 das.; Susana, died February 5, 1879, aged 42 yrs., 2 mos., 28 das.; E. C., September 18, 1861-May 14, 1949; Lucy D., January 31, 1867-September 17, 1922; Virgil G., son of E. C. and L. D., August 11, 1899-February 11, 1901; Eva Ethel, dau. of E. C. and L. D., November 30, 1907, aged 12 yrs., 20 das.
- Morris, Donald Lee, 1932-1935; Charles S., 1875-1940; Ada S., 1879-1951; Ann, wife of Z. Morris, died April 3, 1877, aged 48 yrs., Susanah, wife of John, died January 4, 1873, aged 90 yrs., 10 mos., 26 das.; Thomas, died January 22, 1898, aged 86 yrs., 22 das.; Elizabeth, died September 2, 1899, aged 86 yrs., 8 mos., 15 das.; J. H. July 26, 1842-July 9, 1930; Mary P., wife of J. M., October 24, 1847-December 4, 1916; William Morris, May 26, 1860-December 31, 1887.
- Murrell, Kermit J., 1918-1921; Jonathan P., 1852-1932; Elizabeth P., 1861-1925; Roy, son of J. L., died January 31, 1888; Ruth E., September 24, 1925-December 11, 1927; Sarah A., wife of Isaac H., died February 1, 1907, aged 32 yrs., 8 mos., 15 das.; T. H., died June 7, 1900 aged 77 yrs., 1 mo., 3 das.
- McIntyre, Fannie, dau. of N. L., February 27, 1838-April 15, 1882; N. L., 1855-; Priscilla A., 1863-1922.
- Ogle, Andrew, December 27, 1894, aged 60 yrs., 6 mos., 13 das.; Eda, December 27, 1896, aged 79 yrs., 9 mos., 10 das.
- Owen, Ida F., dau. of J. H. and E. J., died November 6, 1854, aged 9 mos., 6 das.; Willie G., son of J. H. and E. J., died August 31, 1878; J. H., died September 29, 1887, aged 37 yrs., 10 mos., 29 das.; Alta, dau. of J. H. and E. J., died January 29, 1910, aged 28 yrs., 10 mos., 21 das.; Charles H., 1872-1949.
- Perkins, Lou, wife of A. S., died July 21, 1895, aged 31 yrs.
- Phillips, James O. L., October 16, 1854-July 1, 1926; Melvina, wife of J. O. L., January 4, 1858-March 2, 1905; Waller P., son of J. O. L. and M. F., Died March 23, 1881, aged 9 mos., 19 das.; Ora M., 1876-1942; Stella A., 1878-1944; Elmer Price, August 3, 1906-February 21, 1909; George T., 1856-1936; Margaret E., 1858-1937; Mary A., dau. of G. T. and M. E., died January 30, 1896, aged 17 yrs., 5 mos., 12 das.; James T., April 4, 1859-November 28, 1901.
- Purdin, Henry P., 1846-1948; Laura H., 1867-1932.
- Rothe, John Frederick, October 18, 1855-January 8, 1933; Flora S., January 24, 1866-September 14, 1925.
- Sparks, John L., 1861-1933; Marietta, 1863-1949; Myra Delpha, 1888-1944.
- Stevenson, Inf. son of Owen and Alta, January 12-14, 1898.

Morris Chapel

(4)

- Sayers, Alexander, 1832-1916; Elizabeth A., 1838-1924.
 Stultz, Hannah F., dau. of W. E. and M. A., died March 1, 1901, aged 16 yrs., 8 mos., 11 das.; Carrie Ann, dau. of W. E. and Ann, died February 24, 1897, aged 17 yrs., 7 mos., 26 das.; Nancy Ann, wife of W. E., died January 27, 1898, aged 47 yrs., 9 mos.; Elijah, 1873-1927; Sarah E. wife of James, August 12, 1842-August 31, 1913; Oliver T., died June 23, 1908, aged 33 yrs., 5 mos., 6 das.
 Silver, William M., 1871-1936; Charles M., September 12, 1881-May 10, 1910; Joseph J., September 20, 1836-June 2, 1890 Rachel M.; November 16, 1837-September 4, 1911
 Tomlin, Horace A., 1855-1952; Elizabeth, 1862-1941; Winfield, November 29, 1898-June 15, 1899; Little Ida, dau. of H. A. and Lizzie S., died July 28, 1887, aged 2 yrs., 7 mos., 11 das.; Ralph, 1901-1902; Elmer, 1895-1899; Emmett, 1897-1899.
 Twombly, Gertrude E., wife of Edgar William, November 30, 1868-June 24, 1900.
 Tate, Mary C., 1922-1923
 Venable, Pessie Mae, 1916-1917
 Watson, Sarah Margaret, 1857-1948
 Wood, Annie Lee, 1868-1933; C. H. (Bob), 1865-1955; John, died March 30, 1908, aged 86 yrs., 4 mos., 12 das.; Augusta, wife of John, died January 9, 1895, aged 67 yrs., 7 mos., 30 das.; Thomas C. S., son of J. and A., February 17, 1879, aged 21 yrs., 7 mos., 20 das.; Mattie J., died September 22, 1896, aged 24 yrs., 6 mos., 24 das.; Mollie A., November 14, 1939-November 13, 1904; John F., December 5, 1860-December 31, 1952; Emma, October 17, 1872-December 25, 1910; Charles R., died June 2, 1908, aged 54 yrs., 7 das.; Nancy Elmira, March 3, 1865-July 20, 1903; Cordelia, February 24, 1868-January 30, 1926; James K., January 23, 1859-November 16, 1937; Thomas H., July 30, 1854-January 29, 1939; Mary Elizabeth, July 13, 1853-May 18, 1925.

Tombstone located about $\frac{1}{4}$ mile east of Morris Chapel Cemetery along roadside.

- Moore, Averett T., died November 18, 1842, aged 54 yrs.; Ann Marie, wife of A. T., died June 1844, aged 55 yrs.
 Pace, J. T., died November 12, 1854, aged 2 yrs., 5 mos., 10 das.; Marie, died July 6, 1883, aged 63 yrs., 3 mos., 2 das.; William A., died September 15, 1843, aged 2 yrs., 8 mos., 4 das.



Mount Olive

- Adams, Lewis, 1867-; Florence, 1882-1935.
- Abell, Birdie, 1877-1946; Ida L., 1880-; Mary E., wife of R. S. October 25, 1843-March 9, 1881; R. S., May 26 1834-February 26, 1906; J. W., July 2, 1860-October 18, 1936; Anna E., June 17, 1865-February 19, 1908
- Alexander, son of G. D. and E. E.; Rev. Heuben, died June 5, 1871, aged 73 yrs., 6 das.
- Burt, William C., October 19, 1877-April 3, 1915.
- Birkett, Ira Francis, 1856-1924; Nannie Cloud, 1861-1945; Jessie Lee, June 27, 1916, aged 30 yrs., 10 mos.
- Bartholomew, Our Darling William, son of A. and M. E., February 18, 1905-April 13, 1905.
- Burrus, J. D., died February 6, 1903, aged 42 yrs., 4 mos., 17 das.
- Fillings, Robert Lee, 1891-1934; Flora, dau. of D. M. and J., March 17, 1875-March 25, 1875.
- Bailey, Charles E., October 10, 1876-September 26, 1881; William E., May 10, 1878-September 25, 1882.
- Bundies, William A.; March 13, 1861-April 7, 1942; Lucy E., October 14, 1860-January 3, 1914.
- Boyle, J. C., died September 16, 1892, aged 53 yrs., 11 mos., 18 das.; Children of J. C. and M. J.: Charles, died November 24, 1892, aged 4 yrs., 11 mos., 3 das.; Lucy L. and Sarah, Inf., February 24, 1890-November 6, 1892.
- Taskett, Stephen J., January 11, 1821-January 1, 1887; Pheta, wife of Stephen J., April 18, 1830-October 5, 1876;
- Barnes, W. R., April 3, 1870-February 28, 1915.
- Browning, Charles L., 1859-1947; Martha E., 1862-1942; Franklin E., December 1955, aged 69 yrs., 3 mos., 19 das.
- Buckner, Simon J., son, June 27, 1888-January 21, 1948; John H., December 27, 1846-May 22, 1923; Rhoda E., his wife, July 31, 1845-January 23, 1928; Charles T., March 20, 1881, aged 2 yrs., 6 mos., 7 das.; Albert E., son, August 23, 1881, aged 10 mos., 13 das.; Mary J., dau., November 6, 1873-August 3, 1899.
- Brown, William, November 16, 1828-March 30, 1883; Thomas E., July 21, 1834-March 16, 1882; Elizabeth A., his, September 14, 1846-December 12, 1921; Anise, August 27, 1872-March 7, 1925; Laura F. Petty, wife of Alfred, April 14, 1862-August 20, 1935; Alfred, August 27, 1872-December 21, 1950; Susan, October 20, 1866-June 2, 1901; John A., died December 10, 1882, aged 11 yrs., 1 mo., 21 das.; Barbara Marie, dau. of J. O. and M. E., October 6-12, 1947; Mary Ellen, died December 17, 1955, aged 32 yrs., 11 mos., 19 das.; Scott, July 12, 1863-December 6, 1950; Nora Jane, July 22, 1878-February 20, 1928, inf. son of Scott and Dora, June 12, 1915; Son of Scott and Dora, December 21, 1908; Benjamin, died July 16, 1882, aged 40 yrs., 1 mo., 29 das.; Martha, wife of Benjamin, died October 31, 1874-aged 66 yrs., 8 mos., 3 das.



- Forland, William, A. Co., D. 95th Reg., Ohio, Vol. Inf. 62-65, October 4, 1844-April 23, 1919.
- Frunk, Cora A., died September 24, 1893, aged 9 yrs., 6 mos., 22 das.; George Edward, April 6, 1845-April 24, 1881.
- Bowyer, Bertie Lee, June 1, 1882-February 25, 1910; Murtie M., dau. of W. J. and C. E., died March 13, 1884, aged 9 mos., 13 das.; Roy, son of W. J. and C. E., died June 9, 1882, aged 6 mos., 10 das.; Nester May, January 11, 1890-May 26, 1901; Children of R. L. and C. S.: Alice Ruth, died August 2, 1895, aged 2 yrs., 1 mo., 14 das.; Charles Ross, died August 10, 1889, 1 yr., 2 mos., 9 das.; Elizabeth, wife of Jesse, November 20, 1803-March 6, 1879; Spencer G., son of S. and S. A., died March 3, 1885, aged 4 mos., 8 das.; Inf. son of W. H. and E. L., died July 22, 1896, aged 1 mo.; Arthur O., March 20, 1871-February 11, 1949; Inf. son of Price and H., June 11, 1891-June 11, 1891; Ethel, dau. of Price and H., died February 8, 1892, aged 2 yrs., 5 mos., 11 das.; Fay L., son of L. H. and L. N., died December 13, 1906, aged 7 yrs., 6 mos., 4 das.; Sallie A., June 30, 1838-December 5, 1916; Spencer P., July 10, 1835-September 8, 1914; Price, 1861-1933; Malinda, 1858-1939; Robert Lee, January 5, 1864-March 4, 1913; Carrie Susan, December 31, 1867-October 18, 1940; Cora May, October 30, 1882-May 18, 1941; Lloyd Emmett, October 5, 1886; Myra Leone, wife of Lloyd E., December 3, 1888-August 8, 1948; Earl, December 17, 1882-January 17, 1913; Sons of L. E. and C. H.: December 12, 1913; August 17, 1916; October 15, 1917; Twylla Mae, dau. of F. and H., July 28, 1931; Donald Ray, son of E. and H., 1933-1934.
- Price, Roxie L., wife of D. C., died March 2, 1913, aged 29 yrs., 10 mos., 25 das.; Quincy R., August 31, 1839-October 25, 1926; Mary J., September 29, 1847-October 10, 1915.
- Canada, John H., 1863-1936; Clare E., 1871-1954; Isaac H., April 7, 1838-November 24, 1916; Emily A., July 29, 1840-March 26, 1917; Charles W., son of J. H. and E. A., died February 28, 1904, aged 26 yrs., 8 mos., 26 das.; Inf. of J. H. and E. A., died February 25, 1899, aged 1 mo., 24 das.; Martha, died March 18, 1893, aged 84 yrs., 4 mos., 2 das.; Richard, died December 12, 1889, aged 84 yrs., 6 mos., 17 das.; Benjamin, died September 7, 1897, aged 22 yrs., 9 mos., 12 das.
- Coleman, Lee, 1884-1934; James Lee, 1931
- Cassidy, Dottie, wife of E. W., January 25, 1894-November 28, 1916.
- Cunningham, Robert, (No date); Thomas Marvin, March 13, 1900-October 2, 1954.
- Connley, Samuel C., son of J. M. and H. M., June 4, 1884, aged 5 das.



Mount Olive
(3)

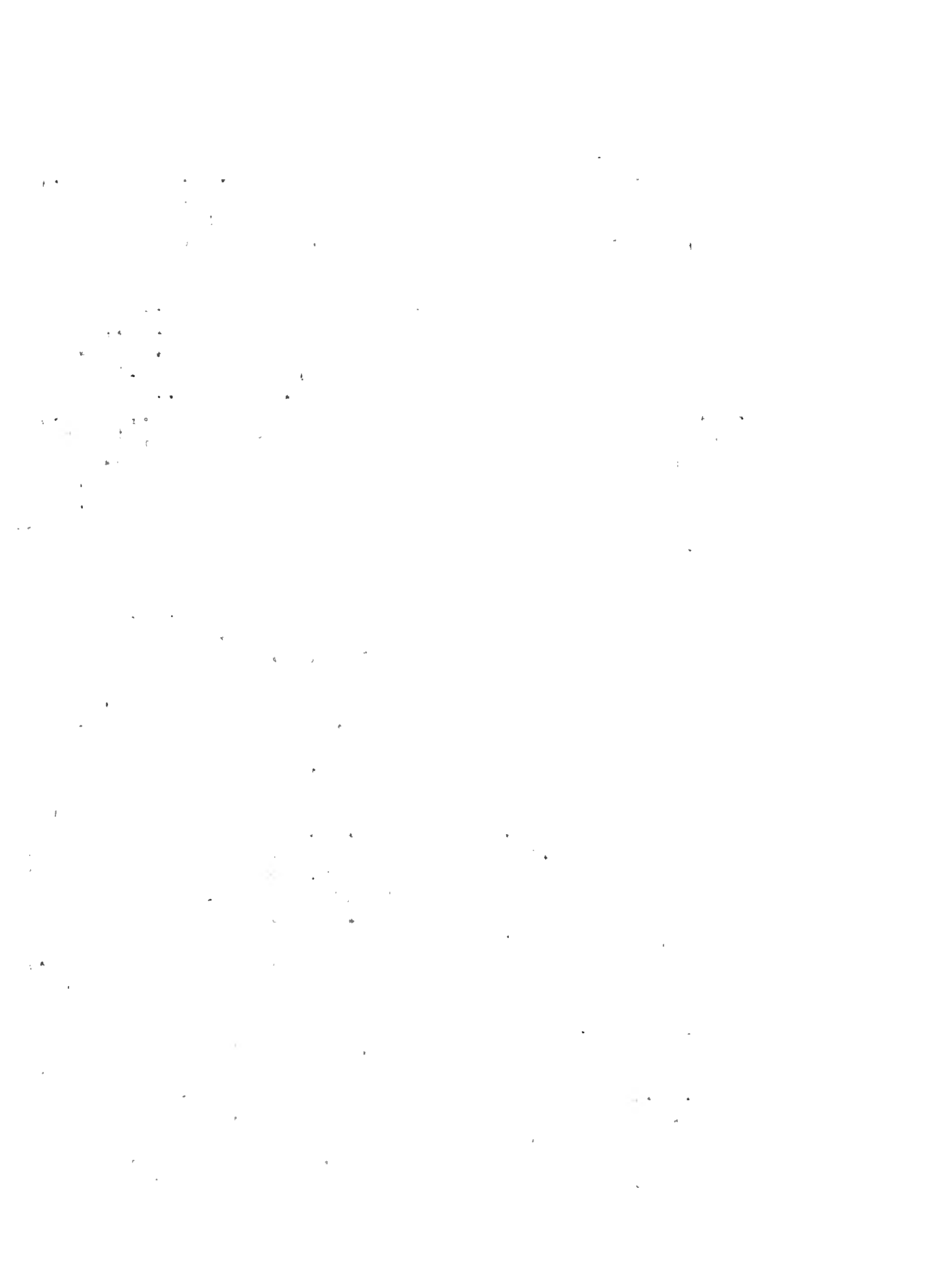
- Cooper, Herman C., 1869-1944; Ollie N., 1888-1934; Roland J., 1869-1922; Sarah J., 1873-1937; Grover A., November 24, 1884-May 7, 1948; Mary F., October 30, 1883-January 15, 1957; Thomas Marvin, March 13, 1900-October 2, 1954; George A., February 12, 1843-January 17, 1914; Mildred, his wife, July 9, 1846-December 14, 1913.
- Casida, Edward E., 1870-1945; Minnie M., 1869-1941.
- Crookshank, Mabiab A., wife of R. D., Died September 1, 1876, aged 46 yrs., 11 mos., 15 das.; George A., son of R. D. and H. A., June 8, 1874-April 18, 1875; Inf. son of R. D. and H. A., died February 12, 1872, aged 6 das.; Sarah, dau. of R. D. and H. A., born December 20, 1869-September 18, 1872; Everett W., 1880-1956; Elva Norris, 1880-; Cleo, nee Gooch, September 12, 1896-February 23, 1919; Margaret E., June 22, 1842-July 30, 1917; Robert D., October 21, 1829-April 15, 1912; Inf. of J. A. and H. F., died March 1, 1892, aged 15 das.
- Cloud, Edgar, son of W. M., April 29, 1881-August 18, 1901; William, 1857-1940; Mary, 1861-1948
- Dunn; Sena, wife of Nehemiah, February 1, 1878, aged 58 yrs.
- Dail, Elizabeth, wife of J. D., June 10, 1907, aged 66 yrs., 10 mos., 4 das.
- Downs, Martha L., died May 11, 1882, aged 24 yrs., 11 mos. 4 da.
- Deere, John, 1870-1952.
- Eckert, Ettie May, May 12, 1885-January 4, 1952; William Henry, November 19, 1880-November 13, 1955.
- Edmundson, Nora, 1875-1936; Staff Sergeant Billy Joe, 1923-1945.
- Engelman, Rosezella Fern, July 17, 1950.
- Elliott, Goldia Irene, dau. of Thomas and Minnie, died June 2, 1909, aged 4 yrs., 1 da.
- Fields, Lucy P., born in Mercer Co., Ky., August 18, 1803-December 20, 1879; Laura, died May 17, 1891, aged 18 yrs., 9 mos., 2 das.; John W., January 2, 1911, aged 59 yrs., 4 mos., 27 das.; Katie I., February 11, 1928, aged 59 yrs., 7 mos., 22 das.
- Freeman, Children of J. H. and Ida: Hazel, died January 18, 1903, aged 4 yrs., 11 mos., 19 das.; Guy W., March 6, 1896, November 27, 1917.
- Falconer, Maude I., 1884-1945; R. Bert, 1883; Mary H., wife of R. T., 1849-1925.
- Good, Ollie, son of H. H. and C. A., died December 26, 1884, aged 3 yrs., 5 mos.
- Ganghro, Eliza, wife of William, died October 11, 1893, aged 70 yrs., William, died March 20, 1895, aged 77 yrs., 7 mos., 27 das.
- Gilmorc, Pearl, 1885-; Sam, 1879-; Elvin Estes, 1908-1933; Veda Mills, 1905-1934.
- Grims, John, 1857-1935; Rachel Jane, 1860-1923.
- Gillespie, Frances H., 1865-1951; Sallie E., 1870-1936.



Mount Olive

(4)

- Gagnon, Robert Dale, August 26-27, 1937.
- Grice, Chester L., 1909-1927; Lloyd G., son of L. E. and S. E., 1913-1915; Sarah, August 12, 1855-October 11, 1934; Daniel W., June 10, 1856-September 8, 1926; Adlai, November 8, 1891-October 6, 1918, Co. H. 351th-88th Div.; Bertie M., wife of Leonard, 1886-1914.
- Gooch, Martha A., February 17, 1846-May 25, 1926; Gideon, March 1, 1844-March 4, 1911; Inf. son of G. and M. A., died August 2, 1884; Nancy Louisa, dau. of G. and M. A., died November 15, 1883, aged 7 yrs., 3 mos., 17 das.; Inf. son of G. and M. A., died July 15, 1883, aged 21 das.; Pernelia Elizabeth, dau. of G. and M. A.; Elma A., wife of E. J., died April 15, 1901, aged 26 yrs., 2 mos., 1 da.; Ira, 1894-1925; Rolan, October 8, 1850-March 22, 1922; Sibbyl, June 1, 1858-January 31, 1926; Louisa, dau. of Rolan and Sibbyl, April 26, 1876-April 30, 1876; Inf. son of R. and S., died September 1, 1889, aged 2 das.; Frank, son of R. and S., died March 1, 1889, aged 11 yrs., 6 mos., 27 das.; William J., March 31, 1851-October 29, 1915; Sarah I., his wife, April 5, 1861-December 30, 1929; Lola A., wife of E. C. McKenzie, died May 16, 1913, aged 30 yrs., 6 mos., 16 das.; Alexander, son of W. J. and Fertha, died January 29, 1909, aged 6 das.; Nova J., October 7, 1877-April 27, 1956; Dr. W. J., July 19, 1913-June 11, 1956; Jerry Phillip, died June 19, 1956, aged 77 yrs., 2 mos., 28 das.; William Jewell, son of J. and Millie C., died October 22, 1890, aged 1 yr., 21 das.; Mattie Frances, dau. of J. and Millie C., died August 20, 1889, aged 11 mos., 29 das.; Dr. J., September 7, 1841-October 13, 1921; Fattie, his wife, May 12, 1853-November 6, 1943; Inf. of D. J. and Fattie, died August 5, 1879, aged 11 mos., 6 das.; Inf. of D. J. and Bettie, July 12, 1887, aged 3 das.; Drinkard, April 21, 1894-September 24, 1918; Alexander, 1835-1921; Mary F., his wife, 1835-1871; Mary E., his wife, 1836-1871; Lucy R., dau., 1863-1869; Charlie, son, 1870-1871; Lola A., dau., 1875-1876; Alice A., dau., 1876-1876; Mary F., wife of Alexander Gooch, December 8, 1871, aged 33 yrs., 6 mos., 26 das.; John A., 1859-1932; Eabe, son of Joseph and Elizabeth; Mildred, dau. of Joseph and Elizabeth, died March 9, 1859, aged 5 mos., 4 das.; Elizabeth, wife of Joseph, died February 21, 1881, aged 46 yrs., 10 mos., 14 das.; Rolan, February 17, 1813-February 11, 1899; William Oliver, son of W. J. and S. I., died November 8, 1891, aged 5 yrs., 11 mos., 18 das.; Ola Lee, son of J. and Millie C., died April 24, 1881, aged 10 das.
- Goins, Minnie Alice, dau. of R. and L. A., May 24, 1881, aged 1 yr., 4 da.; Clarence Eugene, December 10, 1882-October 3, 1918.



Mount Olive

(5)

- Garrett, Richard H., October 18, 1853-February 14, 1920; Ida F., March 13, 1859-May 2, 1906.
- Hayes, Sergt. Co. F., 23rd Regt. Mo. Vol., Inft., John T., August 15, 1835-May 31, 1919; Elizabeth, his wife, April 20, 1838-April 21, 1922; James J., 1865-1926; Walter E., son of T. E. and Viola, died November 18, 1892, aged 5 yrs., 1 mo., 7 das.; Mattie L., dau. of G. M. and H. S., September 17, 1896-July 29, 1898.
- Hoover, Eholia, dau. of A. C. and A. T., March 11, 1903-April 12, 1903; Mansur, son of John and Elizabeth, died November 20, 1886, aged 2 das; John, November 11, 1839-August 27, 1917; Elizabeth J., July 2, 1845-February 26, 1918; A. G., 1875-1954; Agia L., January 3, 1877-April 5, 1917
- Harris, Viola J., 1892-; Lyell C., 1892-1955.
- Hannon, John, died June 6, 1891, aged 66 yrs.; Henry, died July 28, 1896, aged 25 yrs., 9 mos., 18 das.; John T., died March 21, 1885, aged 22 yrs., 3 mos., 28 das.
- Hastings, Jim, 1902-1932.
- Hobson, J. W., 1881-1916; Inf. of E. and W. H., May 7, 1906-May 17, 1932.
- Hammack, James S., November 8, 1861-January 11, 1935; Mary V., November 5, 1861-April 13, 1937; Lester, son of J. S. and H., August 29, 1904-March 11, 1905.
- Hopson, Nora, 1881-1916; Inf. of E. and W. H., May 7, 1906-May 17, 1906.
- Hollon, Nancy J., dau. of J. M. and N. H., September 9, 1882-October 12, 1882.
- Hatcher, Thomas Leroy, March 21, 1899-January 25, 1920; Margaret Louise, November 26, 1877-August 7, 1947.
- Hannah, Lucy A., wife of E., died April 24, 1895, aged 72 yrs., 6 mos., 14 das.
- Iberg, Virgil C., February 13, 1886-; Ethel, November 14, 1887-June 9, 1930; Joseph Roy, died November 25, 1908, aged 25 yrs., Stanley Lee, son of J. I. and Margaret, 1917-1920; Irene, July 27, 1906-August 30, 1920; Virgil Delbert, son of J. and N. A., died August 2, 1908, aged 3 mos., 26 das.
- Jerome, Elizabeth K., wife of Mansfield, November 10, 1867, aged 30 yrs., 1 mo., 14 das.; Sylvia, dau. of W. and G. E., October 21, 1912-August 23, 1915; Ira Francis Grimes, wife of Arren, 1882-1917; Una, dau. of Chauncey and A. J., died June 21, 1880; Minerva F., dau. of Chauncey and A. J., died October 23, 1870, aged 1 mo., 1 da.; Claud W., son of Chauncey and A. J., May 1, 1876 aged 10 mos., 9 das.
- Jacobs, Matthias, November 24, 1833-August 9, 1923; Sarah E., his wife, March 30, 1838-November 1, 1889
- Johnson, John R., 1918-1921; Urban E., January 14, 1883-April 9, 1947; Kenneth R., January 25, 1910-March 4, 1954;



- Johnson, William Grovic, son of R. R. and S. E., died November 23, 1883, aged 2 yrs., 3 mos., 5 das.; Rachel, wife of J. H., May 6, 1817-April 24, 1885; J. H., born February 3, 1809; Elias, died September 22, 1886, aged 30 yrs., 4 mos., 24 das.; Mary S., wife of Zebulon, died July 16, 1895, aged 66 yrs., 11 mos., 9 das.; dau. of W. D. and Mattie, died January 26, 1893, aged 1 yr., 1 mo., 6 das.
- Kimbrough, John W., 1856-1945; Cora A., his wife, 1865-1925.
- Kinber, Cary Fell, died August 6, 1881, aged 1 yr., 14 da.
- Kirby, Asa, died December 17, 1889, aged 77 yrs., 9 mos., 5 das.
- Rufus E., February 20, 1879-December 22, 1880; Louisa F., August 24, 1857-May 20, 1888; John L., April 13, 1852-January 18, 1925; Nellie, June 18, 1866-February 6, 1956; Fred L., 1874-1949; Emma A., 1886-; Evelyn Rose, 1908-1931; J. I., 1848-1916; Louisa, 1847-1923; Richard E., 1868-1942; Eda May, 1867-1934; Joyce Louise (Joy Lou) November 26, 1941-August 10, 1943; Kenneth Ray (Sonny Boy), July 8, 1929-January 3, 1941; Reuben, November 4, 1821-May 4, 1877; Virginia G., March 18, 1838-February 5, 1914.
- Long, Joann, died October 29, 1881, aged 22 yrs.; Andrew, February 25, 1841-January 6, 1914; Abigail R., his wife, February 4, 1848-December 23, 1931; Leonard, son of A. and A. R., died June 1, 1886, aged 1 yr., 5 mos., 18 das.
- Latar, John A., June 23, 1843-January 22, 1935, Co. H., 10th Conn. Vols.; Samantha, February 16, 1845-January 1, 1925; George W., 1871-1946; Warren, son of J. and C. J., died October 24, 1875, aged 18 yrs.; Minott, son of J. and C. J., died October 24, 1875, aged 16 yrs., 3 mos., 10 d.
- Littleton, Children of J. F. and H. J.: William W., May 24, 1872 aged 1 yr., 28 das.; John, died December 10, 1874, aged 10 mos., 4 das.
- Day, Oliver L., October 12, 1886-; Pearl H., August 19, 1887-March 12, 1922; James T., died October 25, 1879, aged 33 yrs., 11 mos., 20 das.
- Lewis, Cordie A., wife of A. R., died March 7, 1912, aged 39 yrs., 3 mos., 26 das.; A. R., died March 18, 1921, aged 49 yrs., 5 mos., 1 da.; Alden Lee, son of A. R. and C. A. Phebe, wife of E. F., died February 8, 1881, aged 19 yrs. 10 mos., 26 das.; George W., son of Franklin and Phebe, died June 27, 1882, aged 21 yrs., 4 mos., 11 das.; Ida H., dau. of E. F., October 11, 1857-March 20, 1904.
- Larson, Ira Otto, 1886-; Kate Powell, 1890-1937; Glen E., 1899-1918; Mary A., 1894-.
- Harley, Lidania, October 30, 1845-April 30, 1922; Andrew J., October 9, 1849-December 30, 1926; Phillip J., October 30, 1847-November 20, 1922; Sarah, November 17, 1848-August 3, 1916; Mary, died December 26, 1898, 86, 10, 12.



Mount Olive
(7)

- Morris, J. Thomas, 1881-1940; Floy S., 1886-; Thomas Leroy, son of J. T. and F. S., December 22, 1907-February 10, 1908; William E., 1872-1955; Anna E., 1871-1942; Inf. dau. of W. E. and Anna E., died August 20, 1919; Joe P., son of Almeda S., February 29, 1884-January 24, 1934; Almeda S., May 5, 1845-December 2, 1886; John W., April 10, 1845, September 14, 1933; Mattie, wife of J. W., died July 15, 1896, aged 27 yrs., 6 mos., 1 da.; Lucy A., wife of John W., died March 31, 1881, aged 32 yrs., 7 mos., 4 das.; Henry B., son of J. W. and L. A., died April 18, 1881-aged 25 days; Inf. son of J. M. and M. P., died March 4, 1885, aged 2 das.; Lee, son of J. M. and M. P. died March 2, 1880, aged 3 mos., 1 da.; Inf. son of W. E. W. E. and A. E., September 8, 1905.
- Miller, Nora B., February 15, 1897-September 22, 1901; Inf. dau. of T. J. and H. B., January 4, 1894-July 17, 1894; Bertha Moore, 1901-1930; Berniece Iberg, 1918-1943.
- McMoore, John, 1849-1922; Georgia Ann, 1860-1943.
- McInturff, H. Jay, son of D. T. and Sallie, died October 7, 1904 aged 21 yrs., 1 mo., 25 das.; Alexander, May 20, 1848 October 3, 1881; Eld. Daniel, July 22, 1892, aged 70 yrs., 9 mos., 12 das.
- McCown, Thomas, 1833-1923; Mary H., 1836-1899; Sarah J., 1857-1937; Edward, son of T. J. and Mary H., December 19, 1870 August 24, 1886.
- McDonald, Archable L., 1847-1897; Laura, 1848-1930.
- McKenzie, Inf. son, January 16, 1906; Inf. dau., died August 15, 1907, children of F. G. and L. A.
- Marcum, Carrie E., dau. of E. and J. A., died July 21, 1894, 6 yrs., 4 mos.; Elisha S., 1845-1930; Julia A., his wife, 1851-1894.
- Molloy, Cecil A., Ho. Pvt. Coast Artry. Corps, born April 21, 1917; Mary E., dau. of A. and H. A., died January 17, 1874, aged 2 yrs., 8 mos., 25 das.; Abelf, September 30, 1903, aged 89 yrs., 7 mos., 2 das.; Hannah, wife of A. F., born in Tazwell Co. Va., December 26, 1810, died May 9, 1876.
- Myers, Daniel, January 19, 1831-December 4, 1912; Lucy A., January 1, 1825-April 26, 1895; Nancy E., May 3, 1846-June 19, 1930.
- Moore, Lora, 1904-1922; Albert, 1891-1911; Howard Lee, June 10, 1888-October 3, 1938; Laura I., wife of Richard, June 17, 1895-May 1, 1923; Maude, died April 7, 1906, aged 22 yrs. 11 mos., 11 das.; Sarah A., 1856-1950; Henry T., 1853-1923; Lura L., wife of Floyd H., April 7, 1870-May 21, 1916; Creed T., 1863-1936; Mattie H., 1866-1951; Cail Glenn, son of C. T. and Mattie H., April 11, 1906-February 18, 1908; James, 1851-1925; Nancy J., wife of J. A., died October 14, 1889, aged 32 yrs., 7 mos., 1 da.



Mount Olive
(8)

- Moore, Laura Ellen, wife of Alton, died October 7, 1883, aged 22 yrs., 4 mos., 21 das.; Alton, August 29, 1860-November 11, 1890, aged 30 yrs., 2 mos., 12 das.; Stephen J., son of R. J. and M. J., died October 14, 1875, aged 18 yrs.; 19 mos., 14 das.; Richard H., died February 20, 1878, aged 53 yrs., 2 mos., 12 das.; Margaret Jane, wife of R. H., May 2, 1822-March 4, 1885; Children of R. H. and H. E.: Eva A., April 18, 1894-February 13, 1896; Emmett P., November 22, 1899-December 11, 1909; Dora, November 28, 1899, aged 2 yrs., 5 mos., 15 das.; Mattie H., October 1, 1875, aged 9 yrs., 11 mos., 26 das.; Thompson, May 14, 1829-June 21, 1904; Nancy H., October 4, 1831-February 7, 1905; Susan E., wife of W. F., April 12, 1814-March 21, 1881; Thomas Henry, son of W. and A. H., May 9, 1896, aged 1 yr.;
- Norvell, Seth R., died March 8, 1904; aged 83 yrs., 1 mo., 27 das.; Frances, wife of Seth, died January 18, 1887, aged 70 yrs., 5 mos., 9 das.; Inf. son of J. T. and M. E., died December 3, 1907; John T., May 22, 1849-March 21, 1926; Mary E., his wife, February 8, 1865-November 12, 1951; Seth H., February 17, 1854-April 5, 1929; Mary E., October 19, 1861-February 7, 1935; Thomas, born in Woodford County, Ky., June 11, 1822-February 6, 1897; Margaret J., died August 2, 1890, aged 67 yrs., 3 mos., 17 das.; Mollie T., wife of Thomas Norvell, died March 19, 1896, aged 34 yrs., 11 mos., 4 das.; Iova J., son of W. E. and F. E., died January 4, 1870, aged 2 das.; Comara A., dau. of George H. and L. A. E.; Lucy A. E., wife of G. H. Norvell (No dates); Jeremiah, 1852-1934; Lou Ellen, 1864-1928; Frank E., July 1872-June, 1924; George A., December 3, 1869-April 25, 1918; Mattie S., his wife, November 19, 1874; Adelia Francis, wife of Wm. H., born in Fulton County, Ky., March 30, 1895-November 20, 1908; Susan E., wife of F. H., died May 15, 1913, aged 80 yrs., 10 mos., 3 das.; Francis M., died November 27, 1887; aged 81 yrs., 10 mos., 6 das.; John W., April 10, 1845-September 14, 1933; Almeda S., May 5, 1845-December 2, 1886; Joe P., February 29, 1884-January 24, 1934.
- Newman, Mary A., died July 29, 1887, aged 63 yrs., 4 das.;
- Peery, Joseph A., 1870-1955; Nellie C., 1872-1955; Henry C., died March 27, 1903, aged 58 yrs., 11 mos., 20 das.; Surrepta L., his wife, died January 22, 1917, aged 65 yrs., 9 mos., 19 das.
- Fryor, William J., son of L. A. and M. H., June 1, 1911, aged 3 mos., 13 das.; Thora Haud, dau. of L. A. and M. H., died December 29, 1913, aged 2 mos., 2 das.; Lucas A., Jr., November 10, 1918-March 13, 1920; Maud May, February 28, 1887-March 3, 1930



Mount Olive
(5)

- Palmer, Norman L., 1935-1943; Wendell I., 1921-1922; Artie, 1897-1943; Leland Kindrough, son of O. G. and S., February 17, 1914-August 28, 1914.
- Paul, Marilea, 1852-1930; John, 1845-1914; James, son of J. and M. H., died January 7, 1875, aged 2 mos.; Nova, son of J. and M. H., died May 9, 1876, aged 18 das.; Eva, 1889-; Fred, 1882-1944; Charles, May 30, 1877-; Allie, April 7, 1876-September 28, 1910.
- Pridemore, Mary Ettie, February 6, 1872-March 27, 1944; William H., August 8, 1864-November 16, 1941; J. M., died September 24, 1920-93 yrs., 6 mos.; Lovigie, died May 6, 1904, aged 74 yrs., 9 mos.
- Phillips, Helen, 1906-1908; Junior, 1924-1925; J. J., March 14, 1829-January 4, 1909; Louise Z., wife of J. J., died February 6, 1849; Lizzio, wife of J. J., died April 11, 1884, born August 2, 1844; William L., died August 21, 1868; Jenkins Bonnie, son of E. L. and Lena, June 9, 1909-May 16, 1921; Inf. son of E. L. and Lena, died October 16, 1906; Marjorie Louise, February 20, 1913-March 13, 1913; Sarah C., wife of J. L., died February 13, 1906, aged 72 yrs., 11 mos., 24 das.; James L., November 22, 1830-June 1, 1902; Wilma K., April 28, 1908-April 1, 1927; Josephine B., July 21, 1871-May 23, 1955; Stephen J., died February 13, 1918, aged 77 years, 8 mos., 15 das.; Margaret L., wife of S. J. died February 18, 1910, aged 60 yrs., 4 das.; Inf. son of S. J. and M. L., died April 12, 1875, aged 6 das.; George W., December 20, 1813-June 21, 1901; James B., 1890-1929; Vernon J., 1891-1938; Mary Ruth, dau. of L. R. and Cora, died December 17, 1911, aged 2 yrs., 11 mos., 20 das.; L. D., August 12, 1857-January 26, 1940; Mildred C., his wife, December 17, 1857-December 2, 1926; Emmett L., 1879-1944; Lena C., 1882-19__; Oliver Cecil, son of L. and F., April 14, 1903-January 25, 1904; Kezziah, wife of L. D., died August 26, 1882, aged 22 yrs., 8 mos., 8 das.
- Powell, Casper H., died June 1, 1892, aged 70 yrs., 10 mos., 15 das.; Susan F., his wife, died January 25, 1904, aged 90 yrs., 6 mos., 5 das.; James Edgar, son of J. C. and M. A., September 6, 1897, aged 2 yrs., 1 mo., 21 das.; Samuel W., 1840-1891; Amanda E., his wife, 1848-1919; Sarah E., wife of F. L., died February 17, 1883, aged 40 yrs., 5 mos., 9 das.; Inf. son of J. W. and M. A., March 11, 1892; Inf. dau. of J. W. and M. A., September 27, 1884; John Willard, 1852-1940; Mary A., his wife, 1855-1931; A. W., September 23, 1813-January 26, 1896; Susan A., wife of A. W., February 11, 1828-May 1, 1901; Emma O., dau. of L. F. and N., died March 5, 1898, aged 8 yrs., 8 mos., 2 das.; Frank, January 29, 1852-October 2, 1922; Nancy, his wife, October 20, 1853-December 31, 1947.



- Powell, Robert Lee, son of A. W. and S. A., September 16, 1888, aged 24 yrs., 11 mos.; Vesta Marie, dau. of H. A. and M. A., August 13, 1903-January 25, 1905; Enot Bradley, died June 9, 1881, aged 2 mos., 2 das.; Nellie McInturff, wife of D. H., died April 2, 1902, aged 21 yrs., 11 mos., 9 das.
- Paterson; Mary, 1839-1881; Marsis, 1865-1867. 1180159
- Peterson, Floy M., 1885-1942; Margaret E., wife of J. F., died January 20, 1880, aged 34 yrs., 9 mos., 22 das.
- Parkhurst, Lila Powell, wife of A. E., 1875-1903.
- Range, Charles, 1874-1934; Lucille, 1873-1955; James W., June 23, 1907, aged 6 yrs., 1 mo., 7 das.; Sarah, wife of J. W., died October 15, 1902, aged 24 yrs., 5 mos., 21 das.; Frank W., died February 14, 1900, aged 24 yrs., 20 das.; Edward, died May 18, 1902, aged 21 yrs., 9 mos., 14 das.
- Robinson, James Henry, son of Samuel and Lucy A., died March 3, 1892, aged 24 yrs., 1 mo., 7 das.; Lucy A.; wife of Samuel, died August 16, 1892, aged 56 yrs., 7 mos., 29 das.; Samuel, January 10, 1836-March 8, 1911.
- Rush, Robert, January 19, 1878, aged 26 yrs., 8 mos., 18 das.
- Robertson, Omer Preston, 1908-; LaVera Mae, 1909-1935;
- Rhodes, Richard, July 11, 1854-November 24, 1894.
- Richardson, Juanita, 1908-1950.
- Reed, Edward P., 1863-1943; Lura Ann, his wife, 1861-1942; Sarah F., wife of J. W., May 14, 1890, aged 38 yrs., 7 mos., 8 das.; Children of J. W. and S. F.: Frances E., died May 22, 1880, aged 1 mo., 22 das.; Thomas S., died January 5, 1878, aged 2 yrs., 7 mos., 26 das.
- Sallee, John William, January 4, 1865-August 12, 1950; Anna Hayes, February 19, 1868-July 29, 1950.
- Cowers, Caswell H., son of J. R. and V. A., July 25, 1885, aged 1 yr., 9 mos., 14 das.; N. S., January 15, 1822-June 23, 1910; Dorcas, his wife, June 4, 1823-October 2, 1834.
- Stone, John, November 12, 1873; aged 23 yrs., 1 mo., 11 das.
- Snyder, William G., 1878-1955; Laura E., 1887-19
- Singleton, Charles D., April 21, 1875-November 23, 1949; John E., May 27, 1850-May 25, 1916; Nancy, his wife, July 5, 1853-May 11, 1936; Inf. sons of C. G. and E. K., 1929-1943; Thomas Lewis, November 3, 1955, aged 88 yrs., 5 mos., 17 das.; Mildred Jane, 1871-1934; Taylor, December 5, 1821-May 8, 1879; Missouri Catherine, August 25, 1830-April 15, 1904.
- Scott, Harry D., 1877-1935; Habel C., 1883-1957.
- Shornultz, Mary Gladys, D.R., 1905-1956.
- Stinghecol, Rebecca, dau. of G. E. and M. A., died December 12, 1878; Inf. dau. of G. E. and M. A.; Mary A., wife of C. E., died November 5, 1875, aged 35 yrs., 5 das.
- Sampson, J. R., died August 21, 1897, aged 44 yrs., 4 mos., 11 das.; J. R., May 1, 1822-September 18, 1902; Frances A., his wife, November 15, 1820-February 9, 1894.



Mount Olive
(11)

- Smith, Jo Ann, May 10, 1940; Fred E., 1916-1918; Jolly R., 1918-1947; Kenneth L., 1915-1949; Lida L., 1889-1954; Virgil M., April 6, 1867-January 22, 1919; Alda, February 7, 1878-February 22, 1956; Vernon E., son of V. M. and Alda, died October 17, 1912, aged 11 yrs., 10 mos., 17 das.; Silva P., dau. of V. M. and Alda, died December 29, 1907, aged 12 yrs., 7 mos., 18 das.; Loren, Jr., 1922-1925; Our Darling Fabe, Inf. son of V. M., died December 30, 1902, aged 18 das.; Luttie, born September 11, 1804; Britton W., 1853-1928; Mary Ann, wife of Britton, 1856-1938; Ada Ann, December 10, 1843-August 7, 1930.
- Stevenson, Louisa, wife of Josiah, died January 31, 1907, aged 39 yrs., 4 mos., 27 das.; Josiah, died November 22, 1897, aged 83 yrs., 3 mos., 8 das.; John W., November 27, 1860-August 19, 1933; Dianna, August 5, 1859-March 6, 1922; Annie L., dau. of James and Mary, died October 6, 1890, aged 18 yrs., 15 das.; Mary F., wife of James T., March 26, 1849-April 1, 1911.; James T., March 12, 1844-March 5, 1931.
- Shaul, Charles Wesley, 1859-1938; Gideon, November 19, 1834-August 20, 1912; Mary A., his wife (No dates); Elva May Eckert, only dau. of Henry and Etta Shaul, 1910-1936.
- Thompson, Martha Ellen, dau. of J. A. and E. G., died October 27, 1873, aged 5 mos.; 7 das.
- Taylor, Stella G., July 3, 1955, aged 64 yrs., 6 mos., 25 das.; Ita Brown, wife of J. H., July 13, 1875-August 15, 1902.
- Tate, Dorothy Ferne, wife of Lawrence, 1921-1944.
- Triplett, David, November 1, 1833-December 14, 1916; Mary C., his wife; March 27, 1845-October 19, 1924; Walters, March 31, 1886-November 24, 1910; Our Darling Baby, son of W. J. and T., died February 4, 1904, aged 27 das.; David, son of W. J. and T., January 26, 1902-November 2, 1906; Joel, July 14, 1799-August 20, 1883.
- Trumbo, Olive, March 10, 1906-September 28, 1907; William E., August 4, 1872-August 4, 1950; Addie S. Burtch, wife of Ernest, June 6, 1875-August 6, 1937; Lorene, dau. of William E. and wife, January 7, 1921-January 21, 1921; William, died July 17, 1902, aged 68 yrs., 14 das.
- Transue, Myrtle E., October 14, 1936.
- Turner, Fenton, December 6, 1886-December 19, 1916; Grace, December 23, 1893-October 30, 1920; James P., February 18, 1849-May 8, 1940; Mary E., May 25, 1857-April 12, 1918; John T., July 26, 1826-February 7, 1902; Louisa, his wife, June 22, 1830-April 30, 1904; Andrew J., May 9, 1861-February 5, 1888; William, June 28, 1873-May 29, 1923; Floy Lea; June 27, 1877; Alice Lea, dau. died November 12, 1907, aged 2 mos., 22 das.; Lee C., 1841-1925; Sarah J., 1848-1934.



- Turner, James A., son of Lee and S. J., died May 24, 1892, aged 11 yrs., 3 mos., 26 das.; Hannah, wife of William, died February 20, 1885, aged 67 yrs., 5 mos., 9 das.; William died May 16, 1879, aged 64 yrs., 5 mos., 9 das.; Samuel, son of L. C. and S. J., died March 6, 1900, aged 20 yrs., 10 mos., 3 das.; Mary Jean, dau. of S. D. and Irene, July 5, 1931.
- Western, Lucy E., dau. of W. T. and S. J., died September 22, 1885, aged 3 yrs., 8 mos., 21 das.; Susan J., wife of William T., died February 11, 1883, aged 30 yrs., 8 mos., 16 das.; W. T., September 1, 1850-September 8, 1896.
- Wood, Fannie B., dau. of J. T., died July 2, 1898, aged 7 das.; Margaret Jane, wife of James, died January 28, 1883, aged 20 yrs., 16 mos., 15 das.; James, May 13, 1825-March 17, 1888; Priscilla, wife of F. P., died May 18, 1875, aged 85 yrs., 1 mo., 22 das.;
- Warren, Lona; dau. of J. H. and L. E., August 8, 1888, aged 8 mos.; Dicie Alice, dau. of J. H. and L. E., died March 21, 1883, aged 1 yr., 18 das.
- Wright, Myrtle, dau. of J. F. and E. J., died January 24, 1884, aged 5 yrs., 11 mos., 5 das.; John L., died January 14, 1906, aged 49 yrs., 6 mos., 17 das.; Lavena A., wife of J. L., died January 25, 1895, aged 33 yrs., 8 mos., 18 das.; Lewis, died February 8, 1880, aged 78 yrs., 1 mo., 8 das.; William, died February 28, 1876, aged 74 yrs., 9 mos., 19 das.; Emily A., July 10, 1844, aged 35 yrs.
- Waits, Marcissa, wife of C. H., died December 2, 1906, aged 59 yrs., 11 mos., 1 da.; Charley, son of G. M. and M. P. December 21, 1881-March 16, 1884.
- West, Virgil Ray, son of D. C. and L. I., died November 13, 1892, aged 1 yr., 11 mos., 21 das.; Elmer and J. S. (Scratched on rocks); Mandie, dau. of J. S. and M. H., died March 3, 1885, aged 10 yrs., 1 mo., 28 das.; Alcinda, wife of James, died February 10, 1885, aged 53 yrs., 6 mos 4 das.; James, (No dates)
- Western, Walter Ernest, died December 30, 1879, aged 25 das.; Inf. son; died August 11, 1875, aged 6 hours; Inf. son died August 11, 1875, aged 6 hours; Hallie Sumner, dau. of, died December 30, 1879, aged 25 das.--all were children of C. E. and F. J.
- Walker, Furnice, dau. of J. C. and L. F., died March 26--, aged 7 mos., 16 das.
- Williams, David L., 1857-1931; Lottie C., 1866-1933; Grace F. Cleveland, 1894-1951; Ruth E., Inf. dau. of Dave L. and Lottie C., January 8-February 3, 1901; Fay, Inf. son of Dave L. and Lottie C., December 8, 1898.



West Liberty

Located in Jackson Township, section 26, township 60, range 22, on the Guy Grider Farm, southwest of Purdin, Mo.

- Alexander, Thomas O., died March 9, 1906, aged 35 yrs., 11m.25d.
 Peasley, Solomon, September 20, 1838-October 28, 1895; Habel
 Ellen, dau. of W. F. and L. F., died April 21, 1900-9d.
 Furnett, Jere P. March 11, 1904, aged 47 yrs., 3 mos., 7 das.;
 Susie, dau. of Isham and Susie, December 4, 1893, aged
 21 yrs., 9 mos., 15 das.; Isham, January 31, 1824-
 December 8, 1907; Susan B., April 25, 1827-May 2, 1911.
 Dail, Joseph O., died November 24, 1903, aged 77 yrs., 9 mos.,
 3 das.; Nancy R., wife of J. O., died April 18, 1869,
 aged 34 yrs., 10 mos., 12 das.
 Dodge, William H., died December 18, 1911, aged 57 yrs., 3 mos.,
 Crice, Clarence, son of John and C. E., December 4, 1880-March
 8, 1891
 Hardin; Joe, 1824-1902; Sallie, 1828-1891
 Haddox, Kirt; Emma, Loraine (No dates)
 Vicks, Nancy, wife of C., died October 3, 1900, aged 68 yrs,
 7 mos., 20 das.; Chandley, October 18, 1828-September
 15, 1908.
 Hopkins, Emanuel, died March 13, 1910, aged 57 yrs., 5 mos.;
 Alice, wife of Emanuel, died January 10, 1903, aged
 42 yrs., 3 mos., 10 das.; Nancy A., dau. of E. A.,
 July 22, 1895, aged 5 yr., 4 mos.
 Hutchons, H. G., February 18, 1888-March 28, 1910.
 Hardin; Joe, 1824-1902; Sallie, 1828-1891
 Kemper, E. H., 1864-1929; Henry, 1846-1920; Roxie Ann, 1850-1934.
 Louthan, Gracie, dau. of A. E. and C. A., February 1, 1887, 2yrs.
 Mashley, Ralph S., June 24, 1857-May 25, 1919; Eliza E.,
 November 6, 1867-September 27, 1918; Children of
 R. S. and E. E.: Lola May, May 12, 1896, aged 10 yrs.,
 2 mos., 20 das.; Joe, May 13, 1892, aged 8 mos., 28das.
 Chester, February 21, 1895; aged 5 mos., 13 das.
 McIntyre, C. L., 1860-1949; Emma C., 1862-1931; Emmagene,
 Chester, Herman; Thomas, died 1940, aged 72 yrs.;
 Mary, died August 19, 1906, aged 38 yrs., 4 mos., 7 das
 Meredith, Thomas H., died March 7, 1893, aged 33 yrs.; Mattie
 S., wife of T. H. (No date); Sallie, wife of Job
 Hardin, August 27, 1891, aged 63 yrs., 2 mos., 13 das.
 Pina, Dr. J. H. December 16, 1832-December 19, 1879.
 Palmore, J. T., died January 5, 1872, aged 98 years.
 Powell, Commodore, March 10, 1875, aged 20 yrs., 10 das.;
 Andrew J., son of C. H. and F., died October, 1863,
 aged 13 yrs., 6 mos., 29 das.; Schuyler C., 1809-1858;
 Peery, Willis, son of W. . . and A. F., died November 11, 1890,
 aged 8 yrs., 18das.; Florence, dau. of W. W. and A. F.,
 died September 23, 1886, aged 4 mos., 28 das.; Almeda
 . . . wife of . . . June 12, 1857-September 28, 1891;
 Jerry Clyde, son of G. T. and Dollie, died November 27,
 1891, aged 6 yrs.; 1 mo., 1 da.; Annie H. Wife of George
 T., died April 10, 1908, aged 49 yrs., 1 mos., 21 das.



West Liberty
(2)

- Peery, G. T., 1859-1930; Love I., December 1903, aged 2 yrs., 2 mos., 10 das.; Thomas A., son of T. J. and M. L., April 28, 1888-May 24, 1888.
- Phillips, Alphonzo, son of G. D. and E., died October 26, 1880, aged 6 yrs., 10 mos., 20 das.; Benjamin F., son of G. D. and Elvira, January 26, 1890, aged 6 yrs., 5 mos., 3 das.; Andrew, son of J. and J., died June 16, 1862, aged 9 yrs., 7 mos.; Willie D. son of G. D. and Elvira, died October 9, 1862, aged 8 mos., 23 das.; James B., son of J. and J., died 1869 (Stone broken and gone); Jeremiah, died April 4, 1876, aged 74 yrs., 2 mos., 12 das.; Jemima, wife of J. P., died October 30, 1860, aged 47 yrs., 18 das.; Edmund W., son of J. and J., March 20, 1860, aged 2 mos., 26 das.; William R., October 6, 1897, aged 79 yrs., 8 mos., 14 das.; Margaret, wife of W. R. February 4, 1911, aged 64 yrs., 6 mos., 29 das.
- Talley, William T., July 1, 1871-September 7, 1879
- Veach, G. W., May 29, 1881 aged 44 yrs., 3 mos., 17 das.

Purdin

Located northwest of Purdin, Missouri

- Alexander, Charles Frederick, November 17, 1871-November 9, 1921
Herman, died May 30, 1907, aged 32 yrs., 9 mos., 13 d.
Benjamin W., 1867-1954; Hattie A., 1866-1946.
- Alams, Hermin T., 1871-1936; Guy, 1875-19_ ; George, December 14, 1847-January 18, 1921; Emma, his wife, November 27, 1851-May 26, 1927.
- Armstrong, Thomas E., 1871-1949; Minnie L., 1876-1939; Inf. dau. of T. E. and M. L., 1911 and 1915.
- Bowyer, Walter H., 1875-1957; Edna L., 1878-19_ ; Orville L., 1900-1947.
- Baskett, Alma Lee, 1930-1932; Jerry Guy, 1891-1955; Pearl Mae, 1898-19_ ; William E., 1866-1925; Cordelia A., 1868.
- Farrows; Benjamin H., 1888-1948; Nellie L., 1898-19_ .
- Glender, John S., 1885-1952; Clara D., 1886-; Oscar L., 1888-1950; Jewell A., 1890-19_ ;
- Hapley, Collic, June 20, 1897-July 27, 1919; Charles S., 1872-1955; Jo Anna, 1943-1944; Charles F., 1921-1932.
- Felt, Nellie, September 7, 1893, aged 4 yrs., 1 mo., 26 das.; Lucille, dau. of O. L. and Lila, 1910-1918; Harlin, son of O. L. and Ella, 1913-1918.
- Dona, Elizabeth, wife of Peter, died August 24, 1889, aged 65 years, 7 mos.; Peter, died January 13, 1892, aged 69 yrs., 10 mos., 28 das.; Lillian, wife of W. L., March 13, 1869-May 30, 1912; William L., May 14, 1853-September 3, 1935; Alpha C., November 11, 1903-July 9, 1949.



Furbin
(2)

- Fowles, Robert O., January 18, 1905; Mary Eulalia, July 2, 1909-
June 29, 1943; Christine, dau. of R. O., and M. E.,
January 27, 1904, aged 2 yrs., 11 mos., 9 das.; R. H.,
March 14, 1874; Hollie E., April 1, 1879-September 11, 1951
- Euswell, Harry Leo, Inf. son of J. A., 1922; Clella E., March
24, 1890-February 14, 1955.
- Euswell, Harry Leo, inf. son of J. A., 1922; Clella E., March
24, 1890-February 14, 1955.
- Fockett, W. Craid, 1888-1955; Stella ..., 1899-.
- Fuchanon, Priscilla, September 29, 1829-September 12, 1910.
- Furbin, Alonzo L., 1852-1929; Effie, 1867-1942; Kathleen, 1923-
1924; U. F., November 12, 1860-March 28, 1924.
- Failey, Hazel Parker, 1907-1940.
- Fingarnier, Joshua M., 1871-1946; Stella Baker
- Flock, Cornelious C. ..., January 27, 1870, aged 1 yr., 4 mos.,
7 das., Eliza, wife of William H., May 16, 1881, aged
36 yrs., 6 mos., 7 das.
- Fales, William Riley, 1864-1943; Mary L., 1872-19
- Barkholder, William ..., 1859-1944; Emily C., 1867-1936.
- Fivens, Everett F., January 26, 1891-December 8, 1918.
- Fundridge, Solomon W., No. Pvt. 110th Am. In. 35th Div., March
9, 1891-October 1, 1944.
- Fraddous, Walter P., 1868-1939; Dora May, 1866-1944.
- Crookshank, Joseph ..., 1870-1946; Viola F., 1878-.
- Corbin, Ramona Lee, dau. of G. J. and H. L., November 12, 1953.
Barbara Ann, dau. of G. J. and H. L., 1944-1945.
- Cumbo, Mont, August 21, 1884-February 26, 1936; William H.,
June 6, 1874-March 13, 1939; Orra Mae, February 20, 1879-
May 22, 1944.
- Chittum, Andrew, 1861-1944; Julia A., 1871-1945; Rebecca H.,
1869-1940.
- Cassidy, Robert William, December 19, 1868-January 25, 1942;
Cora Anna, wife of R. W., March 17, 1866-February 2,
1942; David C., February 10, 1869-September 24, 1925;
William H., March 4, 1836-December 3, 1923; Louise C.,
wife of W. H., May 10, 1843-March 11, 1916; Cecil L.,
1892-1945; H. Faith, 1894-19; Morris A., May 1920;
Robert L., February, 1923; Oscar, son of W. and Jennie,
December 20, 1902, aged 28 yrs., 3 mos., 5 das.;
Pearl, dau. of W. and Jennie, January 21, 1894; Maggie,
wife of R. L., died March 18, 1880, aged 19 yrs., 6 das.
Josephine, wife of Armstrong, April 30, 1836-July 19,
1913; Charles ..., 1877-1935; Fred ..., November 5, 1882;
Alpha O., April 28, 1882-January 30, 1953; Lula Pearl,
1901-1904; James A., 1874-1944; Nora H., 1880; Frank
H., 1878-1955; Miriam F., 1876-; Weaver E., 1878-1955;
Miriam F., 1876-; Weaver C., August 6, 1881-October 20,
1946; Clara, March 12, 1887; A. N., May 2, 1851-April
8, 1915; Sarah A., March 8, 1849-May 7, 1922.



- Cassity, Carl T., June 27, 1903-; V. Ruth, June 20, 1905-
April 27, 1952.
- Cooper, Melissa, wife of A. L., died March 2, 1899, aged 41 yrs.,
7 mos., 21 das.; Robert, died January 14, 1900, aged
80 yrs., 9 mos., 22 das.; John H., April 16, 1853-
December 14, 1944; Virginia M., wife of J. H., January
21, 1854-January 23, 1909.
- Cokerham, Elias W., November 15, 1833-November 8, 1920;
Martha E., wife of W. E., October 12, 1849-April 21,
1918; Morris, son of P. E. and S. E., April 18, 1920;
Willis J., March 7, 1880-February 27, 1955; Nannie E.,
July 2, 1881-January 28, 1943.
- Cady, Thomas D., 1912-1928.
- Creason, Wilbur Manuel, November 30, 1882-June 8, 1938; Joseph
Sylvester, December 29, 1869-September 8, 1952; Anna
Lee Jenkins, September 8, 1871-May 17, 1937.
- Calhoun, Charles Ernest, son of J. B. and N. O., July 9, 1917-
August 28, 1918.
- Carter, Pearl Miller, 1897-1915.
- Chambers, Nelson S., 1856-1932.
- Couretou, Fortna, wife of T. J. July 17, 1899, aged 22 yrs., 9, 6
Dell, Sewood S., 1856-1944; Flora A., 1857-1941.
- Darr, Patrick, December 7, 1840-March 23, 1919; Fevera F.,
May 20, 1882,-October 14, 1946; Eliza E., wife of Patrick,
May 27, 1847-november 1, 1925; Inf. son of B. F. and
Thora, September 7, 1910; Inf. son of F. F. and Thora,
December 7, 1914; Thurston A., May 6, 1892-October 14,
1914; Bernie L., 1902-1955; Ruby S., 1902-.
- Dodge, George L., December 27, 1849-February 15, 1916; Ann
Jane, wife of G. L., December 24, 1858-March 5, 1932.
- Downing, wife of Wm. H., August 8, 1897, aged 59 yrs., 4 mos.,
28 das.; William H., April 19, 1903, aged 24 yrs., 9
mos., 22 das.
- Enfield, Mattie E., wife of G. W. March 8, 1853-April 14, 1909.
- Edens, Bertie H., 1903; Joe W., 1901; Roscoe, 1882-19__;
Leonard H., 1877-1955.
- Eaton, John H., son of J. W. and L. J., died March 12, 1891, 2 yrs
- Fetters, Rosa, wife of E. F. September 22, 1831-January 5, 1909.
- Fields, Elizabeth, December 30, 1847-May 3, 1926; Thomas J.,
January 1, 1845-July 3, 1914.
- Forshee, J. T., January 3, 1838-December 2, 1903; Eliza, wife of
J. T., June 24, 1839-September 17, 1909.
- Fuller, Henry L., June 13, 1870-November 18, 1956; Susie B.,
March 13, 1875-September 4, 1941.
- Gilmer, E. Price, 1859-1950; Lola A., 1884-; William P., Octo-
ber 12, 1953, aged 75 yrs., 7 mos., 23 das.; John H.,
1850-1913; Mary, 1857-1937; Grice, Charles I., 1861-
1941; Ella A., October 9, 1861-March 9, 1938.
- Garrett, Ica, 1882-; Ana, 1885-1923; Olive H., 1868-1954;
John J., 1860-1934; Martha H., 1862-1949; Erby Irvin,
son of J. J. and T. H., January 4, 1904, aged 11, 6, 7.



Purdin

(4)

- Graham, Inf. dau. of William and L. ..., February 6, 1876-17 da.
Gearhart, Benjamin F., April 10, 1850-January 1, 1904.
Gooch, Curtis ..., January 8, 1885-June 3, 1951; Walter J.,
1880-1953; Susan Morris, 1878-1947; George H., 1874-
1945; Charles H., 1867-1956; Clara H., 1873-19-; Floy
C., 1925-1928; Floyd E., 1919-1922; George H., 1874-
1945; Mary Dale, 1886-.
Goins, Richard David, 1932-1936; Emma Francis, December 11,
1876-July 21, 1951.
Gabriel, Carolyn V., 1934-1935; Velma K., 1916-1935.
Hill, Lena C., 1881-1939; Garfield, April 20, 1881; Nora E.,
September 21, 1881-September 25, 1939.
Hicks, Jay H., 1852-1934; Cynthia L., 1857-1931.
Helms, Orville H., July 5, 1900-January 18, 1937; Wallace E.,
Pvt. U. S. Army, 1897-March 13, 1944; Eva Mae, 1902-;
Elby C., 1874-1944; Luella E., 1877-.
Hoselton, Vernie D., wife of Conway, April 9, 1900-Aug. 13, 1919
Hale, Walter, son of G. S. and A., July 2, 1906, aged 1 yr.,
4 mos., 17 da.; Alice, 1868-1945.
Hitchcock, Matilda, wife of John J., July 22, 1901, aged 70 yrs.
4 mos., 12 das.
Hodges, Inf. son of J. A. and L. H., March 16, 1911; James A.,
September 9, 1865-August 6, 1945; Lucy ..., January 15,
1867-February 6, 1919; W. R., 1841-1925; Sarah, wife of
W. R., 1845-1916; Arley, inf. son of J. W. and O. H.,
born and died April 4, 1908; Irvin, 1921-1925; Vernon
E., son of Wm. and W. H. August 2, 1918-November 17, 1921
Hixenbaugh, Edward L., 1885-19-; Sadie S., 1887-1951.
Honing, Clara Adams; wife of H. P., 1878-1922; Harry Adams,
February 14, 1909.
Harper, Estell E., 1924.
Hale, Silas S., 1864-1926; Mary L., 1866-1946.
Hawkins, Johnnie T., son of J. L. and A. L., October 21, 1908-
April 24, 1911; Howard D., son of J. L. and A. L.;
June 6, 1911-May 4, 1912; Albert A., September 11,
1873-April 5, 1941; Mary A., wife of A. A., March 6,
1874-March 5, 1923.
Hisel, George L., 1859-1943; Mary H., 1867-1954.
Henter, W. D. F., 1871-1939; Lucy H., 1874-1947; Durward E.,
No. Lieut. Dental Corps, December 2, 1939.
Hoover, Marion W., 1864-1934; Dora Lee, 1872-1933.
Hardin, Robert Lee; 1868-; Jane D., 1875-.
Jenkins, Betty L., 1931-1937; Hiram, 1827-1903; Calista, 1840-
1915.
Jones, E. F., born December 11, 1833-; Mary, March 19, 1834-
August 30, 1892; Frances P., October 28, 1861-April 4,
1873; Martha E., January 17, 1873-July 1, 1873; E.
Lincoln, 1860-1947; Cornelia S., 1861-1931; Charles
Laven, 1926-1927.
Kingsolver, Grafton, March 29, 1883-; Clara, December 23, 1882-
November 14, 1955.



- Johnson, Edna Gladys, dau. of G. H. and May, April 3, 1901-March 26, 1903; Lucille, dau. of G. H. and May, died July 3, 1897, aged 5 mos., 10 das.; Charles A., 1907-1946; Ruth E., 1906-; Dullanay, 1870-1944; Charles M., 1861-1943; B. G. April 16, 1833-December 14, 1893; Lucy J., October 18, 1839-June 3, 1911; Inf. ch. of H. and C. L., September 19, 1887-March 7, 1886; Henry, 1856-1935; Orpha L., 1857-1925; Susan, 1885-1919; Albert S., 1858-1938; Lola Mae, 1861-1934.
- Lambert, William T., November 21, 1874-January 11, 1948; Florence M., June 11, 1881; Frank A., March 27, 1883-July 27, 1955; Ida C., July 22, 1883; Viola E., March 11, 1896-November 22, 1932; Marvin Edgar, Ho. Cpl. 14th Inf. 25th Inf. Div., Korea, June 28, 1928-February 4, 1956; Calvin Herman, Ho. Tec. 5, 393rd Eng. Corps. En. W. W. II., January 26, 1926-July 30, 1954.
- Lister, Richard E., October 21, 1929-November 5, 1929.
- Luck, Edward E., 1877-1955; Flora E., 1876-1945.
- Lee, Maurine, June, 1902; Pauline, June, 1902; Virgil, 1875-1957; Rose Dodge, 1888-1954; Maude Adams, 1880-1914; Dorothy, August 1939; James, September 21, 1842-March 27, 1918; Lena, May 20, 1851-February 23, 1928.
- Minor, Ronnie Douglas, 1957-1957
- Nolloy, Mack, 1897-1954; Thelma, 1903-
- Mathews, Roy W., 1884-1949; Margaret, 1886-
- McBully, Alonzo, 1875-1945; Feizida C., 1877-19
- Myers, Joseph C., October 11, 1861-September 27, 1944; Mary A., March 18, 1865-August 28, 1950; John H., 1866-; Grace, 1889-1933.
- Moore, Austin, son of Cynthia and Robert, January 11, 1885-November 25, 1907; Allen, son of Cynthia and Robert, January 8, 1877-November 9, 1893; Robert, December 30, 1852-March 31, 1923; Cynthia Ann, October 10, 1855-December 12, 1935.
- Murray, Howard T., February 6, 1860-April 8, 1939; Nellie E., August 28, 1862-December 17, 1928; Alec T., 1895-1946; Marjorie; 1907-
- Mathews, Susie J., 1880-1920
- Melton, John H., February 20, 1829-March 24, 1908; Louisa G., wife of J. H., March 18, 1822-January 21, 1908.
- Monroe, Russell Dee, 1894-1938; George E., April 10, 1859-May 10, 1922; Caroline E., his wife, February 15, 1862-February 11, 1918; Louie G., June 5, 1891-December 1, 1915; Billy, 1930-1930.
- Morris, Thomas R., 1851-1944; Lucinda, 1864-1926; Otis, 1878-1933; Albert Sidney, November 19, 1869-February 29, 1956.
- Miller, William P., 1869-1930.
- Hills, John F., 1844-1921; Jennie, 1854-1922; Ella C. Prudence, dau. of J. F. and J., August 24, 1895-March 3, 1904.



- Hoffett, Francis P., died March 4, 1875, aged 26 yrs., 7 mos., 1 da.; C. W., October 3, 1812-February 1, 1869; William, died April 19, 1852, aged 57 yrs., 5 mos., 2 das.; Edy, wife of Wm., December 30, 1805-December 26, 1876; William L., September 4, 1835-December 18, 1903; Orilla Jane, wife of W. A., May 21, 1849; Thomas J., February 28, 1830-December 18, 1898; Marie, dau. of Thomas and Elizabeth, July 5, 1866, aged 1 mo., William T., son of Thomas and Elizabeth, October 4, 1868, aged 11 years.
- McGhee, Andrew H., May 7, 1856-March 25, 1917; Fannie, his wife, June 22, 1859-January 20, 1836; John H., August 4, 1857-October 1, 1954; Mary E., October 1, 1861-December 28, 1940; George E., November 8, 1885; Lillie H., May 24, 1888-August 11, 1923; Lee Roy, March 22, 1894-June 25, 1925; Josie Lee, March 16, 1897-.
- Ogle, Edward S., 1876-1952; Margaret A., 1874-1946; John A., March 19, 1880-September 12, 1926; Rosa E., dau of D. G. and F. E., died November 5, 1897, aged 5 yrs., 11 mos., 22d. David G., 1853-1942; Frances E., 1857-1944.
- Owens, Clarence, Ho. Pvt. U. S. Army, January 23, 1895-October 1, 1933; Ellen Jeanette, April 23, 1947.
- Purdin, Martin L., October 4, 1835-July 30, 1892; Susan A., August 14, 1836-May 27, 1895; A. L., October 5, 1855-January 6, 1926; Mary F., August 23, 1858-February 11, 1916; Ophelia, dau. of Alex and Susan, April 21, 1879, aged 22 yrs., 11 mos., 26 das.; Sarah E., July 26, 1841-October 10, 1860; Mary, died February 11, 1855, aged 56 years.; Daniel, 1859-1931; Ida I., wife of Daniel, 1863-1949; Alexander, July 18, 1826-May 31, 1922; Mary J., his wife, June 16, 1849-February 1, 1936; Susan F., wife of Alexander, August 4, 1828-March 14, 1894; Charles E., July 22, 1797-February 11, 1887; Lydia Ann, wife of C. E., October 26, 1888, aged 67 yrs., 3 mos., 13 das.; Fendal P., July 15, 1854-March 27, 1907; Rachel F., March 12, 1810-June 22, 1862; F. O., 1833-Floy H., 1885-1953.
- Pierce, James M., 1881-19__; Goldie P., 1887-1940.
- Pearson, Orpha J., wife of J. L., died August 23, 1910, 21, 7, 1
- Previtte, Henry Dec, son of Joseph and Julia, died June 1, 1878, aged 1 yr., 2 mos.
- Pechler, Esce, son of W. H. and E. A., September 9, 1879, 2 yrs.
- Parter, Eli, 1879-1945; Letitia, 1887-19__.
- Palmer, C. Frank, 1867-1956; Ida A., 1864-1946.
- Phillips, Harry, 1868-1945.
- Penhale, . J., 1876-1943; Wirtle F., 1887-19__.
- Pound, John Lewis, December 22, 1849-February 22, 1923.
- Pulliam, Thomas, April 27, 1843-July 12, 1920; Anna, wife of Thomas, April 27, 1843-August 26, 1918; George D., 1868-1946; Minnie A., wife of G. D., 1868-1946.



- Pulliam, Edward H., 1871-1949; Rhoda R., wife of E. H., 1883-1946; William, 1869-1947; Ella, 1873-1932; Effie M., 1877-1951; Willard M., September 16, 1865-July 24, 1935; Ronald Ray, 1927-1932; Velma Lee, 1924.
- Rudloff, John E., 1872-1947; Mary A., 1877-.
- Riedle, Banton R., June 4, 1874-December 19, 1952; Ella H., November 27, 1871-January 30, 1930.
- Reedy, Samuel E., son of W. H. and A. L., died May 5, 1888.
- Riley, wife of G. L., May 28, 1864-June 25, 1910; G. L., January 6, 1861-February 11, 1927.
- Roberson, Z. H., 1829-1914; M. G., 1837-1910.
- Shouse; Orvis Lee, 1926-1927.
- Shutts, Caroline, died February 2, 1924, aged 80 yrs., 1 mo.
- Sloan, Gold Star Mother, Hannah C., April 3, 1863-December 28, 1943.
- Schreiner, Charles, 1873-1955.
- Southerland, Clementine A., April 7, 1825-July 1, 1898; F. J., February 12, 1874-December 18, 1929; Minnie, his wife, September 21, 1875-March 26, 1926.
- Stone, Maude W., 1906-1926; Ben F., November 26, 1898-March 20, 1926; Mamie O., July 7, 1901.
- Schrock, Davis G., February 23, 1852-August 17, 1935; Sarah L., December 6, 1855-February 23, 1933; H. Elmo, 1907-1945; M. Rosalie, 1907-19; Hattie M., January 17, 1878-June 22, 1945; Wilson E., October 10, 1877-April 22, 1920; Isaac W., September 15, 1914-April 12, 1915; Curtis A., 1884-1933; Sampson D., August 11, 1860-November 6, 1918; Jennette F., October 29, 1860-March 6, 1942.
- Smith, William H., November 26, 1875; Ida E., wife of W. H., September 13, 1875-June 3, 1955; George A.; Mo. Pfc. 34th Inf., 24th Inf. Div., Korea, August 8, 1931-July 20, 1950; Charles E., February 2, 1861-September 22, 1932; Cora E., December 5, 1869-February 26, 1939; Travis E., 1912-; M. Lorraine, 1915-; Delphus S., January 3, 1853-May 5, 1928; Amanda, November 4, 1850-October 10, 1932; William Harrison, 1889-1953; Callie M., 1891-19.
- Stultz, William E., February 1, 1844-February 3, 1929; Susie F., April 7, 1866-August 9, 1941; Edward, October 3, 1869-March 29, 1912.
- Sargent, Bertha A. Moore, 1887-1949; Margie Elizabeth, 1907-.
- Shouse, Robert G., 1879-19; Cora L., 1881-1952.
- Stone, Maude W., 1909-1948; Earl, 1902-.
- Simpson, Athow, February 10, 1842-April 21, 1921; Laura C., his wife; Albert A., December 30, 1880-April 28, 1940.
- Street, Joseph Austin, September 24, 1854-January 5, 1945; Belle Scott, March 2, 1862-February 20, 1953; David A., November 11, 1851-August 12, 1925; Rebecca, May 7, 1855 aged 33 yrs.; Alphonso, 1866-1953.



- Street, Bettie E., wife of Alphonso, 1862-1952; James A., 1852-1943; Mary H., 1872-19..; Thomas J., August 24, 1862-January 24, 1943; Daisy Grear, December 26, 1876; Catherine Ananda, December 13, 1868-December 19, 1902; Catherine, wife of S. H., November 26, 1825-February 1, 1900; Cleta, dau. of Hiram and Dora, September 20, 1890, aged 2 yrs., 2 das.; Lee, son of Hiram and Dora, December 29, 1896-December 29, 1896; Hiram, April 14, 1856-July 13, 1937; Isadora, wife of H., May 19, 1857-April 25, 1946; Helen, January 2, 1922; Alonzo H., April 26, 1891-April 24, 1945.
- Tribble, Louisa Chase, May 18, 1846-October 20, 1899; Ethel, dau. September 26, 1877-February 19, 1920.
- Trottershall, Alda A., 1884-1945.
- Tate, Tressie H., May 4, 1891-May 5, 1952; Charles E., April 30, 1889.
- Urbach, Walter C., 1877-19; Lettie E., 1883-1949; Charles, March 7, 1849-February 24, 1927; Huldah Jane, December 13, 1857-July 12, 1923; William T., 1887-19; Lillian H., 1876-1953; Inf. son of G. E. and L. H., December 3, 1926; Charles E., 1879-1955; Cora, 1881-1955; Charles P., 1901-1929.
- Varien, J. H., April 24, 1852-March 27, 1912; Lucy E. Moore, his wife, October 18, 1855-March 31, 1912; Kenneth, son of Clayton and Ella, January 31, 1917, aged 8 das.
- Wycoff, Louis O., 1890-19; Mattie H., 1895-1951; Harold H., Ho. Pvt. 330th A.F. Service Co. W. W. II., August 28, 1912-August 21, 1944.
- Wolfe, Albert O., 1868-1939; Elda A., 1869-1956; L. A., December 8, 1877-December 30, 1953; Lillia A., wife of L. A. March 27, 1887-December 4, 1922; T. T. Cap, 1872-1947; May M., 1876-1952.
- Wohler, William H., 1866-1949; Virginia, 1871-19..
- Williams, Richard L., February 29, 1858-January 22, 1920; Mary E., his wife, February 27, 1861-February 6, 1951.
- Walker, Wiley V., 1869-1950; Hilda C., 1868-1947.
- Wolf, T. J., September 17, 1841-May 30, 1921; Lucinda, wife of T. J., June 20, 1852-September 10, 1904; Maude, September 1884-October, 1934.
- Welford, Sarah A. C., June 20, 1844-November 15, 1922; Walter, Inf. son of Lettie, December 16, 1916-August 25, 1917.
- Walters, William, 1879-1954; Bertha, 1886-1946.
- Wiggins; Albert J., 1873-1908.
- Young, Pinke, dau. of J. T. and R. D., died June 29, 1884, aged 9 yrs., 9 mos., 5 das.; John Thomas, February 9, 1841-July 30, 1914; Rhoda V., June 1, 1846-May 18, 1926.



Parson Creek

Located southwest of Hecla, Missouri.

- Alexander, Hilton, died January 17, 1895, aged 77 yrs., 3 mos., 14 das.; Martha A., wife of Hilton, died September 20, 1865, aged 40 yrs., 8 mos., 22 das.; Kenneth, Inf. son of G. W. and Belle, died October 22, 1888, aged 10 weeks; George, son of G. W. and Belle, April 29, 1893-May 17, 1893.
- Allen, John R., August 5, 1922-October 6, 1926; Ross, son of J. R. and M., died January 2, 1903, aged 11 yrs., 10 mos., 26 das.; Joseph E., son of R. J. and L. W., August 28, 1862-April 11, 1885; Nancy, wife of R. J., November 25, 1828-December 26, 1896; R. J., died November 19, 1875, aged 46 yrs., 9 mos., 11 das.
- Austin, Gertrude, 1869-1871; Benjamin, died January 26, 1879, aged 76 yrs.; James, son of S. and E., died May 4, 1871, aged 20 yrs., 8 mos.; Stephen, died February 27, 1872, aged 70 yrs.; Archibald, son of J. D. and Anne, died August 7, 1884, aged 6 yrs., 6 mos., 7 das.; Sarah, wife of Joel, died October 1875; Joel, died February 25, 1855-aged 44 yrs., 9 mos., 19 das.
- Agin, Mary Ann, wife of Lewis, died May 18, 1884, aged 46 yrs., 21 mos., 28 das.; Lewis, Co. D., 95th Ohio Inf.
- Awberry, Mary, February 12, 1876, aged 76 yrs.; Joseph, June 30, 1889-aged 93 yrs., 7 mos., 15 das.; Sarah, April 15, 1833-September 8, 1898.
- Botas, Mary D., wife of T. H., died October 16, 1910, aged 78 yrs., 4 mos., 5 das.; Thomas H., died April 21, 1906, aged 74 yrs., 14 mos., 18 das.
- Billigily, Rachel, wife of John, died April 6, 1884, aged 83 yrs., 11 mos., 12 das.
- Bohnart, Ralph E., 1918-1939.
- Brown, Three Darling Babes, 1917-1920, of Mr. and Mrs. Roy; Charley, 1867-1931; Rosa Lee, 1870-1952; Edith Emily, 1906-1932; Roy, 1893-1944; Charles, February, 1840-June, 1912; Sarah A., November, 1849-September, 1927.
- Brunk, Edward, May 4, 1817-February 2, 1876; Amanda Alice, wife of A. J., died August 28, 1886, aged 32 yrs., 3 mos., 29 das.; Inf. son of A. A. and A. J., May 3, 1880-May 17, 1889; John L., May 5, 1883-July 28, 1884.
- Budgett, Sarah H., wife of John, died July 19, 1887, aged 56 yrs., 4 mos., 22 das.; Ada, died 1870, dau. of S. M. and J.; John, died January 2, 1892, aged 74 yrs. 3, 22.
- Fassett, Vada V. Tharp, wife of A. D., 1875-1921.
- Furn, Inf. dau. of H. H.
- Black, Nancy Jane, wife of C. D., died March 12, 1881, aged 18 yrs., 4 mos., 29 das.; Inf. dau. of M. J. and C. O., died February 25, 1881.
- Erinager, Wilbur C., died April 26, 1880, aged 3 mos., 2 das.
- Huckman, Elmore, son of J. and M., died September 9, 1865-5 das.



Parson Creek
(2)

- Luckner, Simon E., son of J. N. and M. M., died August 3, 1865; aged 2 yrs., 8 mos., 8 das.; . . . , died July 3, 1868, aged 53 yrs., 2 mos.; Ollie, wife of W. W., died July 12, 1901, aged 82 yrs., 5 mos., 13 das.; Mina Francis, "Frankie", dau. of A. J. and Mittie E., died August 4, 1897, aged 10 yrs., 11 mos., 24 das.; Erna Z., dau. of A. J. and Mittie E., died May 3, 1875, aged 2 yrs., 3 mos., 5 das.; John P., died January 2, 1886, aged 34 yrs., 11 mos., 26 das.
- Burch, Elizabeth, wife of John, died July 31, 1885, aged 54 yrs. John, died March 16, 1884, aged 53 yrs., 6 mos., 1 da.; Margaret, dau. of Margaret Frances, died September 24, 1867, aged 1 yr., 8 mos., 10 das.
- Chapman, Alma N., January 3, 1895-July 29, 1953; William Eugene, 1857-1914; Arabelle, 1855-1941; Arthur, son of William Eugene and Arabelle, died March 8, 1896, aged 1 mo., 3 das.; Ed., 1852-1946; Alice, 1852-1907; Alice, dau. of F. C. and F. L. Perry, 1909; Stephen W., January 8, 1842-February 25, 1923; Perthia M., dau. of S. W. and A. M., died October 27, 1887, aged 13 yrs., 7 mos., 8 das.; Mary A., wife of George W., died May 25, 1914, aged 79 yrs., 4 mos.; George W., died August 9, 1895, aged 79 yrs.; Ellen E., wife of R. W., died December 18, 1888, aged 39 yrs., 3 mos., 7 das.; Delmar, October 11, 1885-May 3, 1918; Charles A., 1879-; Alpha L., 1882-1929; Catherine E., 1866-1919.
- Cox, Goldie, 1891-1891; Franklin, 1889-1893; George I., 1860-1938; Nancy E., 1862-1951.
- Conkaway, Sarah E., wife of . . . , born December 2, 1859-May 17, 1901; Almira, February 4, 1826-April 12, 1897; James A., April 8, 1824-April 21, 1886; Edmund, February 24, 1800-June 8, 1888; Emma, dau. of R. G. and S. B., died August 29, 1877, aged 9 yrs., 1 da.
- Clarkson, William T., May 12, 1850-March 13, 1940; Margaret J., September 6, 1848-October 1, 1925; Lucy A., dau. of . . . T. and M. J., died July 15, 1884, aged 7 yrs., 9 mos.; Elbert H., 1889-1956; Gracy J., 1890-; George W., son of J. T. and M. J., April 11, 1887, 8 yrs., 10m6
- Cook, Mantna E., dau. of El. and Julia, died February 20, 1874, aged 4 yrs., 8 mos., 20 das.; Samuel E., 1867-1917; Laura F., 1864-1946.
- Creamer, Isgar G., died March 23, 1876, aged 3 yrs., 6 mos.
- Dowell, Ma E., dau. of W. N. and E., died April 18, 1893, aged 20 yrs., 8 mos., 3 das.; William H., February 10, 1833-June 12, 1912; Elizabeth F., his wife, March 21, 1834-March 12, 1910; Inf. dau. of J. R. and E. M., died February 7, 1909, aged 2 das.; Frank E., died December 28, 1904, aged 40 yrs., 5 mos., 11 das.



- Decre, Iltyd, September 8, 1832-November 6, 1916; Fischeann, his wife, October 20, 1833-July 26, 1917; Children of I. and P. A.: Ella, February 11, 1878-February 11, 1878; Janie, June 25, 1876-July 1, 1876; Cora, October 17, 1873-September 4, 1874; Eddie, August 2, 1872-August 4, 1872.
- DeVaul, James A., son of R. . and S. L., January 4, 1865-October 13, 1893.
- Dust, Joe Ann, February 20, 1835-February 21, 1935; Alva A., 1884-1940; May P., 1883-1940; William ., January 8, 1942, aged 36 yrs.; Mattie, March 11, 1949; Henry A., son of P. D. and J., died May 27, 1881, aged 3 yrs., 10 mos., 14 das.; Perry, February 20, 1839-April 20, 1910; Mary J., his wife, January 24, 1845-February 26, 1934.
- Dwight, Minnie, dau. of J. G. and S., died January 13, 1901, aged 15 yrs., 11 mos., 5 das; Allen Loren, Mo., Slc Ushr, . . . , May 26, 1914-May 6, 1948; Allen Junior, 1898-1937; Donald H., 1905-1945.
- Erickson, Charisma F., dau. of G. H. and A. L., died February 20, 1880; aged 3 yrs., 1 da.
- Freeman, Carrie A., September 15, 1858-September 17, 1937.
- Fell, Sarah ., wife of Thos. J., died September 25, 1873, aged 23 yrs.; 4 mos., 22 das.; Montie, died August 23, 1880, aged 5 mos., 6 das.; Inf. son, died September 6, 1875; Inf. son, died July 6, 1881; Sarah, died April 26, 1877, aged 79 yrs., 3 mos., 28 das.; John R., died November 10, 1873, aged 56 yrs., 9 mos., 28 das.; Elvira B., dau. of Sarah and J. R., April 17, 1867, aged 21 yrs., 5 mos., 19 das.
- Fare, Alexander, son of R. H. and Caroline, died January 18, 1882, aged 17 yrs., 26 das.; Caroline, (No date)
- Grider, Albert, July 26, 1843-February 15, 1912; Julia ., October 25, 1843-February 10, 1912.
- Graham, C. A., died December 2, 1900, aged 34 yrs., 4 mos., 28 mos.; Sarah F., wife of G. W., died June 10, 1897, aged 75 yrs., 4 mos., 12 das.; John H., son of G. W. and S. B., died December 3, 1893, aged 27 yrs., 5 mos.; I. in cokuk, Ia.; F. F. H., April 16, 1844-January 15, 1911; Rebecca J., his wife, October 31, 1860.
- Goodrich, Katie, 1867-1871
- Glenn, John, 1797-1879
- Grieb, Daniel, died June 9, 1863, aged 64 yrs., 4 mos., 1 da.
- Gibson, Milna Jean, 1943-1943.
- Gray, Daniel, 1853-1913; Cassie, 1857-1948; Robert Louis, 1866-1947.
- Goss, Fred ., 1930-1939; Ernest, 1874-1947; Willard V., Mo. Tlc. Sgt., 418th A. . F. Sub Sq., I. I. II, April 2, 1921-May 29, 1944.



- Gibson, Alva Lee, 1881-1942; John, Ho. Staff Sgt., Inf. W. W. I., November 14, 1914-August 2, 1944; Jacob William, October 1, 1947, aged 68 yrs., 3 mos.; 1 da.; Arthur, 1879-1947; James H., January 15, 1884, aged 29 yrs., 9 mos., 27 das.; James H., son of M. T. and Mary, died July 27, 1884, aged 3 mos., 27 das.; Henry, died March 18, 1864, aged 33 yrs., 2 mos., 8 das.; Martha Ann; Frances, wife of Thornton Trumbo, former wife of Henry Gibson, died January 30, 1915, aged 75 yrs., 4 mos 17 das.; Sarah E., dau. of G. W. and E., died November 21, 1872, aged 1 yr., 10 mos., 20 das.; George F., died January 4, 1888, aged 22 yrs., 8 mos.; 19 das.; James F., son of G. W. and E., died July 5, 1863, aged 1 yr., 1 mos.; Virginia, wife of T. H., May 20, 1888, aged 31 yrs., 4 mos., 11 das.; Maggie H., dau. of V. and T. H., died April 23, 1881; Thomas H., January 3, 1857-September 7, 1923; Sarah L., his wife, September 14, 1865.
- Guthrie, Children of J. T. and E. A.: Samuel H., November, 1866-December 4, 1866; David L., January, 1866-February 22, 1866; Sarah E., May 19, 1869-November 10, 1869; Mary J., died June 2, 1868.
- Gregg, Willard T., born November 17, 1902-April 7, 1903; Lloa, March 9, 1905-March 29, 1905; Willard, 1869-1956; Commora, 1833-1940.
- Gipson, H. Timothy, 1859-1941; Ella I., 1864-1932; Jacob, died February 7, 1861, aged 29 years.
- Hall, George P., December 16, 1873-May 26, 1910; H. Louisa, wife of T. A., died July 20, 1892, aged 26 yrs., 11 mos., 17 das.; T. A., September 27, 1849-February 10, 1930; Violet H., dau. of A. and A., January 17, 1907, January 20, 1907; Nellie, dau. of A. and A., April 28, 1901; Allan, 1877-1944; Alice, 1877-.
- Holcer, Levi H., August, 1869-June, 1949, Co. L.; 4th Inf. 3rd Div.; Gregory, February 5, 1840-August 7, 1915; Mary Ann, April 28, 1852-December 11, 1949; Robert L., 1879-1948; Lola H., 1887-1935.
- Hisel, James, 1857-1938; Mary J., 1856-1933.
- Harris, J. F., July 29, 1839-October 12, 1920; Jane, his wife, June 11, 1844-April 26, 1913.
- Hodges, Miles B., 1860-1917; Retta H., his wife, 1869; Nancy Jane, wife of H. B., died November 17, 1908, aged 50yrs.
- Keaton, Sarah E., dau. of J. H., January 18, 1879, aged 23yr.7d
- Hagan, son of R. and S., died September 7, 1892, aged 2 mos. 13d
- Howell, Frances H., wife of W. H., died December 28, 1869, aged 58 yrs.; 11 das.; William H., died November 3, 1872, aged 61 yrs., 5 mos., 29 das.; Hubert, son of L. L. and A. H., June 16, 1871, aged 78 yrs., 23 das.; Alice, dau. of L. L. and A. H. July 27, 1881, aged 13 yrs., 7 mos., 20 das.; L. L., died June 22, 1912, aged 73 yrs., 22 das.; Amanda, died March 8, 1866, aged 44 yrs.



Parsons Creek
(5)

- Iberg, John W., Co. Pvt. Inf. Cand. School En. W. W. I., March 6, 1893-September 16, 1953.
- Igo, Ollie E., wife of D. H., died April 3, 1911, aged 34, 10, 28
- Johns, Willie J., son of J. P. and L. C., died February 10, 1878, aged 1 yr., 9 mos.; Lucinda G., wife of J. P., died February 7, 1878, aged 15 yrs., 11 mos., 27 das. Thomas T., died April 7, 1899, aged 31 yrs., 7 mos., 18 da
- Lake, Levi Allen, September 15, 1828-February 1909; Elizabeth, his wife, December 22, 1829-March 4, 1918; Benjamin F., 1849-1928; Margaret E., wife of E. F., died March 10, 1892, aged 28 yrs., 4 mos., 15 das.; Spencer W., July 17, 1863-December 29, 1915; Bertha H., February 18, 1873-October 9, 1902; Albert, 1873-1944; Jeannette, 1880-1942; Pauline, dau. of A. and J., 1918-1925; Henry Taylor, November 3, 1861-March 29, 1940; Clara I. Wood, his wife, January 12, 1863-January 8, 1918.
- Lane, Willis Wade, 1882-1953.
- Luyster, Floy, dau. of D. P. and S., died August 14, 1905, aged 24 yrs., 2 mos., 18 das.; Sophia, wife of D. P., July 6, 1852-April 23, 1885.
- Lochard, Alta, dau. of H. and E. F., died July 12, 1883, 11m. 26
- Mitchell, B. F., son of S. F. and Eliza J., August 12, 1863-January 12, 1886; S. F., March 15, 1819-August 12, 1892; P. J., born August 5, 1872; Vallie H., his wife, May 19, 1875-July 13, 1912; Agnes G., February 23, 1910; Joseph, April 4, 1909-April 5, 1909; Charles, born and died October 8, 1906; Osker H., born and died, January 7, 1901.
- McCullum, Baby dau. of W. J. and Ella, died January 3, 1883, 11 mos.; Will J., March 19, 1858-October 29, 1910; Lillie, his wife, August 15, 1865-September 29, 1905.
- More, Wiley H., December 14, 1831-November 14, 1904; Eliza J., June 2, 1843-November 13, 1922; Walter E., December 20, 1863-July 15, 1942; George Edward, 1859-1939; Catherine C., October 7, 1834-January 15, 1894; Edward, died September 2, 1889, aged 58 yrs., 7 mos.; Samuel, 1862-1929; Sarah E., 1868-1931.
- Molloy, Abel F., 1868-1934; Ida A., 1870-1947; Della L., July 1, 1911-March 18, 1929.
- Mills, Hattie E., dau. of J. F. and Fannie, died March 14, 1871 aged 1 yr.; Fannie, wife of J. F., September 10, 1844-April 22, 1889; J. L., (No date); James, April 8, 1840-February 2, 1908; Katherine, his wife, December 22, 1849-June 6, 1916.
- McFarland, Phil, wife of E., June 16, 1879-22 yrs., 2 mos., 9da.
- McIntyre, Daniel E., son of J. H. and Maggie, died August 18, 1870, aged 1 yr., 11 mos., 19 das.
- Murray, Sarah R., wife of David F., died April 21, 1883-24, 11, 3

1. The first part of the document discusses the importance of maintaining accurate records of all transactions and activities. It emphasizes that this is crucial for ensuring transparency and accountability in the organization's operations.

2. The second part of the document outlines the various methods and tools used to collect and analyze data. It highlights the need for a systematic approach to data collection, ensuring that all relevant information is captured and stored in a secure and accessible manner.

3. The third part of the document focuses on the analysis and interpretation of the collected data. It discusses the various statistical and analytical techniques used to identify trends, patterns, and insights from the data. It also emphasizes the importance of presenting the results in a clear and concise manner, using appropriate visual aids and charts.

4. The fourth part of the document discusses the implications of the findings and the steps that need to be taken to address any identified issues or areas for improvement. It highlights the need for a proactive approach to problem-solving and the importance of regular communication and collaboration between all stakeholders in the organization.

Parsons Creek
(6)

- Miller, John P., 1858-1953; Cynthia A., wife of J. P., 1858-1913; William W., son of Wm. and Amanda, died May 10, 1863; aged 5 mos., 7 das.; William, died December 9, 1865, aged 35 yrs., 5 mos., 10 das.; Amanda, wife of William, died May 27, 1866, aged 33 yrs., 6 mos., 5 das.; Alvira, dau. of Wm. and Amanda.
- Marcum, Elisha, died September 24, 1888, aged 31 yrs., 8 mos., 24 das.; Martha, wife of E., died January 21, 1883, about 63 yrs.
- Mays, Claude, Missouri Pvt. 1cl., 43rd Inf., 15th Div., July 22, 1934.
- McMay, Andrew, 1854-1891; Hettie A. Crank, 1859-1928.
- Neal, Children of P. T. and E. A.: Olive, June 24, 1874-November 15, 1875; Harle, died November 13, 1882, aged 11 mos. 12
- Nixon, Eudine, wife of Will, died May 25, 1875.
Franklin, son of A. and M. L., died September 28, 1815, aged 7 yrs., 2 mos., 18 das.; George, son of A. and M. L. died June 27, 1866, aged 17 yrs., 5 mos., 22 das.; Alexander, January 1, 1870, aged 65 yrs.
- Nichols, Walter ., 1855-1942; Clara E., 1863-1950.
- Norvoll, Ora Lee, dau. of Lon and Nellie, died April 10, 1912, aged 4 mos., 5 das.
- Newton, Asa, died August 17, 1889, aged 73 yrs.; Willard E., son of O. H. and H. A., died September 26, 1890, aged 6 yrs., 3 mos., 20 das.; Mary Ann, wife of John, died January 14, 1882, aged 82 yrs., 10 mos.; John, died February 1, 1872 about 77 yrs.
- Onen, Hebron T., died May 2, 1856, aged 57 yrs., 11 mos., 7 das. Cornelia, wife of A. H., died January 20, 1880, aged 24 yrs., 20 das.; Maudie, dau. of A. H. and G. A., died January 24, 1887, aged 5 weeks; William E., son of W. B. and E. G., June 20, 1858-December 26, 1860; Mary, dau. of W. E. and E. G., July 20, 1845-August 15, 1861; Elizabeth, wife of Wm. E., died April 9, 1881, aged 56 yrs., 6 mos., 7 das.;
- O'Neal, John H., 1866-1953; Ella H., 1866-1920.
- Powell, Richard, son of L. H. and S. S., died October 25, 1875, aged 3 yrs., 2 mos., 5 das.; Chauncey Marion, son of E. H. and F. E., died January 7, 1913, aged 7 mos., 25 das.
- Pierce, F. S., died October 19, 1875, aged 18 yrs., 7 mos., 10 das.; Fred A., August 9, 1872, aged 24 yrs., 5 mos., 1 da
- Platt, Mary S., wife of Frances, November 22, 1846, September 22, 1892.
- Pitman, Jane, wife of Allen, died April 12, 1881, aged 68 yrs.
- Reamer, Lottie, wife of E. P., died April 5, 1800, aged 58 yrs., 5 mos., 17 das.
- Page, John A., March 29, 1836-February 14, 1888; Mary E., his wife, October 20, 1844-November 4, 1916.



- Prather, John, died August 1, 1879, aged 7 yrs., 4 mos., 26 das.
William P., wife of John, died November 17, 1877, aged
71 yrs., 1 mos., 9 das.; Ester, died August 4, 1827,
dau. of W. R. and J., aged 18 yrs.; Virgil A., 1867-
1946; William A., died November 2, 1919, aged 79 yrs.;
Martha A., his wife, August 13, 1846-March, 1933; Ida
Frances, February 8, 1873-February 27, 1908.
- Parker, James E., February 3, 1862-August 28, 1906; Herbie E.,
son of J. D. and E. P., died September 15, 1899, aged 5
yrs., 11 mos., 15 das.; Mary A., wife of Josiah, February
25, 1824-December 7, 1907; Stiles, died April 5, 1900,
aged 34 yrs., 10 mos., 21 das.; Matilda. (No dates)
- Phillips, Pertha M., dau. of L. H. and B. L., died December 13,
1895, aged 1 yr., 5 mos., 24 das.; Ida E., wife of
David L., September 5, 1884, 18 yrs., 8 mos., 23 das.;
George A., son of Silas and Enaline, died June 30,
1884, aged 11 yrs., 1 mo., 17 das.
- Pigher, Lillian H., 1865-1935.
- Ross, James A., died July 20, 1912, aged 6 yrs., 4 mos., 6 das.
Emma C., wife of J. A., died February 27, 1911, aged 65
yrs., 5 mos.; Bertie, dau. of J. K. and E. C., died Octo-
ber 17, 1894, aged 16 yrs., 10 mos., 26 das.
- cox, Ruth O. Nichols, wife of J. H., January 9, 1904-February
26, 1928; J. Hines, September 21, 1871-December 21, 1933;
Littie M.; April 12, 1874-March 29, 1954; Inf. son of J. H.
and A. P., 1904-1905.
- Sniflett, Hessianah, former wife of Alfred Balle, November 18,
1842-July 10, 1919; Lucy J., 1875-1940; Glenn A., 1898-
1930; Nellie May, dau. of L. J. and M., died February
25, 1908, aged 8 yrs., 24 das.; A. H., 1840-1918;
Susan Jane, wife of A. H., 1837-1907; Ollie F., 1870-
1870; Gertie, 1880-1880; A. Lixon, December 17, 1846-
March 13, 1931; Mary C., July 10, 1852-November 25,
1915; James, February 28, 1876-April 12, 1877; Mary,
wife of R. A., died January 7, 1886, aged 35 yrs., 5
mos., 16 das.; A. P., March 11, 1844-May 2, 1914;
Mary J., July 21, 1845-January 7, 1881; Jesse H., 1885-
1921; Sgt. Jesse A., U. S. A., A.C., born 1907, killed
in action, 1941; Lora F., 1890-; Albert T., August
23, 1870-April 6, 1909; Ella Frances, 1927-1927;
Bowie Allen, 1929-1929; Jennie F., wife of Harvey A.,
August 14, 1877-May 5, 1908; Little Truc, son of J. F.
and A. A., June 6, 1907-March 21, 1908; Harvey A.,
November 5, 1874-aged 63 yrs., 2 mos. 7 das.; Emma E.,
dau. of J. A. and J., July 12, 1879, aged 8 yrs., 23
das.; Sarah A., wife of Daniel, died August 12, 1850,
aged 38 yrs., 8 mos., 6 das.; Children of D. A. and L.
B.: Perry, died December 6, 1871, aged 5 mos., 3 das.,
John, died August 17, 1857, aged 5 yrs., 3 das.;
Angeline, died August, 1852, aged 6 mos.



Parsons Creek
(C)

- Stoddard; William Virgil, August 24, 1956, 38 yrs., 4 mos., 1 da.
Stephens, Joanne, dau. of I. T., died January 17, 1872, 1, 1, 17
Salce, Ida H., wife of R. L., September 18, 1870-February 11,
1901; Mave, 1869-1944; Ella, 1870-1956; Willis, January
15, 1911, aged 77 yrs., 2 mos., 4 das.; Angeline, Dec-
ember 11, 1837-November 5, 1926; Effie E., dau. of G.
W. and F., April 27, 1887, aged 1 yr., 1 mo., 13 das.;
Alfred, born in Schuyler Co., Mo., October 13, 1842-
September 10, 1878.
- Shouh, Perla May, died January 6, 1894-aged 4 yrs., 5 mos., 21 da
Stewart, Nellie H., died February 27, 1872, aged 3 yrs., 3 mos.,
3 das.; James, 1841-1911; Catherine, his wife, 1841-
1925; Hugh J., 1869-1941; Willard, December 28, 1861-
October 5, 1892.
- Sharp, James K., 1852-1917; Nancy C., 1856-1936.
- Singleton, Thomas, died August 20, 1897-aged 36 yrs., 5 mos., 24
Thomas, Stella J., died September 16, 1901, aged 40 yrs., 5 mos.,
23 das.; Jessie, died February 9, 1901, aged 40 yrs.,
4 mos., 28 das.; Fanny L., died October 18, 1894, aged
8 yrs., 6 mos., 18 das.
- Tharp, Allen, died December 25, 1898, aged 85 yrs., 10 mos., 3
das.; Emeline, wife of Allen, died June 19, 1908, aged
88 yrs., 11 mos., 9 das.; Ida, dau. of C. and L. A., died
April 25, 1892, aged 11 mos., 29 das.; Julia A., dau. of
F. S. and Josephine F., November 12, 1850-February 4, 1863;
Dr. John H., 1844-1927; Martha I., 1851-1930; Inf. dau.
of H. P. and G. C., April 5, 1922; Margaret, aged 85 yrs.,
10 mos., 22 das., mother of Mary C. Shiflett, W. T., J. H.
and M. L.; William, 1860-1923; James H., 1848-1929;
Evan S., August 11, 1820-December 17, 1893; Josephine F.,
his wife, September 19, 1826-December 29, 1915; Robert L.,
March 30, 1855-March 8, 1943; Margaret, September 14, 1861
August 19, 1936; Thomas, son of R. H., August 12, 1885,
aged 4 yrs., 6 mos. 8 das.
- Thompson, Amanda, died January 31, 1902, aged 33 yrs., 3 mos., 17;
Margaret T., wife of Dr. Thompson, June 12, 1831-
October 9, 1911; D. R., died January 15, 1895, aged
70 yrs., 10 das.; Benjamin T., died September 4, 1884,
aged 31 yrs., 9 mos., 5 das.; Nancy Esabell, died
October 16, 1876, aged 24 yrs., 12 mos., 24 das.;
William Oscar, son of F. T. and Isabell, January 9,
1877, aged 2 yrs., 5 mos., 12 das.; David M., son of
Dr. and Margaret, May 11, 1888, aged 25 yrs.; Keith
Wilson, son of F. T. and Belle, died February 8, 1898,
aged 1 yr., 11 mos.
- Turner, David, died March 12, 1885, aged 57 yrs., 8 mos., 26 das.
Transue, W., died November 22, 1893, aged 71 yrs., 2 mos., 16 das.
Margaret S., wife of W., died January 30, 1896, aged 70
yrs., 10 mos., 18 das.



Parson Creek
(9)

- Utley, Children of W. W. and Julia: Thomas H., died May 12, 1867, aged 7 mos., 26 das.; Mary, died September 17, 1873, aged 2 yrs., 9 mos., 6 das.
- Wilmoth, Richard H., October 19, 1851-February 19, 1916; Christiann, his wife, June 27, 1853-May 25, 1919.
- Waits, James W., 1859-1935; Carrie E., 1866-1952.
- Williamson, Rebecca J., wife of Henry C., February 10, 1844-March 14, 1870
- Wingate, John T., March 8, 1868-November 15, 1937; Maggie, February 11, 1878-January 13, 1954; Virgil Lee, September 25, 1881-March 5, 1951; Virgil Lee, November 18, 1918-March 2, 1923; James H., February 20, 1841-February 1, 1914; Missouri A., October 11, 1851-October 1, 1882.
- Wallace, William, son of H. J. and W. J., January 6, 1904-December 5, 1916.
- Wilcox, Celia, wife of D. E., married August 20, 1844, died December 23, 1877, aged 57 yrs., 9 mos., 15 das.; Sarah, (No dates)
- Wilson, Enoch G., died February 8, 1889, aged 55 yrs., 2 mos., 17 das.; Claudie, son of G. G. and A. H., died October 22, 1886, aged 5 yrs., 11 mos., 4 das.; Amy, February 11, 1844-April 21, 1917.
- Wilkerson, Inf. son of J. R. and Leona, died May 6, 1893; Aaron E., April 22, 1902, aged 65 yrs., 3 mos., 21 das.; J. H., died September 27, 1896, aged 24 yrs., 4 mos., 3 das.
- Wymer, Euphany, wife of G. W., died May 15, 1884, aged 52 yrs., 21 das.;
- Young, Martha L., wife of W. D., died September 23, 1878, aged 23 yrs, 22 das.; Charles E., son of W. D. and M. L., died February 17, 1874, aged 19 yrs., 9 mos., 27 das.

Prather

Located Southeast corner section 12, township 60, range 21, west of Browning, Mo.

- Anderson, Minerva A., dau. of J. G. and L. (No dates)
- Correll, Samuel W., 1873-1945; Lillian G., 1875-1927
- Prather, Walter W., 1863-1937; Rosa B., 1865-1946; Ross E., May 8, 1878-February 6, 1939; Thulah W., June 17, 1879-May 10, 1928; Thomas, died July 30, 1892, aged 64 yrs., 8 mos 7 das.; Lucinda, wife of Thomas, died June 27, 1876, aged 61 yrs., 7 mos., 10 das.; Johnnie, son of W. W. and Rosa B., died November 26, 1888, aged 1 da.; Thomas, November 23, 1807-July 30, 1892; Lucinda, November 17, 1807-June 27, 1876; Millian T., February 1, 1841-June 11, 1922; Rebecca Smith, March 3, 1842-August 9, 1934; Ernest Fay, August 1, 1894-April 17, 1952; Mary A., November 30-1843-May 1, 1856.
- Sayers, Pocahontas A., wife of F. B., 1888-1928.



Enterprise Standard, located southeast of Browning, Mo.
Laid out in 1869 by Mr. Swisegood; first interment was the remains of Mr. Ira Porter.

- Alexander, Martha D.; October 8, 1836-July 1, 1901
Alspach, Clarence C., son of R. W. and A. M., March 26, 1885,
aged 1 month, 16 days.
Anderson, Margaret, dau. of J. and J., October 22, 1873, aged
21 yr.; 6 mo., 16 das.; Gilbert, June 16, 1849- August
16, 1924; Orra B., June 15, 1859-March 13, 1834;
Petty, dau. of G. and O. B., September 28, 1901-January
1, 1902.
Austin, Mary L., wife of Moses, died November 11, 1869, 27, 1, 15.
Farclay, Fobbie Leon, son of E. N. and S. J., died August 1, 1894;
Lewis, son of P. H. and S. J., no date; Alpha, dau. of
D. J. and H. E., March 8; 1886-March 12, 1886.
Fallock, Archibald, died March 17, 1880, aged 52 years; Gene,
wife of A., died September 24, 1898, aged 71 years.
Bowles, George H., 1879-1954.
Calhoun, John Hardy, 1882-1949; Artie Moccie, 1869-; James A.,
1854-1922; Helen H., his wife, 1855-1947; Beatrice,
dau. of J. A. and H. H., November 4, 1886, aged 1 year,
4 mos.; Buntic, son of J. A. and H. H., September 1,
1877, aged 25 das.
Cokerham, William, son of E. M. and H. E., November 14, 1874,
aged 10 mos., 14 das.; Mildred, dau. of P. E. and S.
E. May 13, 1916, March 5, 1917.
Correll, Susan B., November 23, 1795-August 7, 1872.
Cassity, Benjamin F., 1880-1938; Delia May, 1886-1949.
Dillon, Snellin E., son of S. E. and E., February, 1868-Sept-
ember 3, 1868; Jessie A., dau. of S. E. and E., June
14; 1865-September 9, 1865; Susan A., dau. of S. E. and
E., May 5, 1870, aged 2 mos., 15 das.; Snellin E., died
November 14, 1872, aged 62 years; Robert L., son, Aug-
ust 24, 1873, aged 2 years, 15 das.
Dickinson, Harvey, died December 3, 1875; aged 76 yrs., 8 mos.;
22 das.; Sarah, born March 27, 1817; Jeanne Bullock,
May 10, 1848-August 31, 1933; H. H., died July 19,
1895, aged 51 years, 3 mos., 19 das.; Elsie May,
dau. of L. A. and E. A., December 20, 1912-October
17, 1918; Lorenzo A., 1870-1945; Emma A.; 1873-1942;
Duncan, Joseph Lee, September 21, 1874-September 18; 1909.
Fleming, Little May, dau. of F. A. and C. E., May 5, 1882-
August 15, 1882; John Lawton, son of F. A. and C. E.,
May 9, 1883-August 20, 1883.
Filson, Ida Ray, wife of R., April 13, 1865, aged 23 yrs. 8m., 15d.
Harman, Edwin, 1907-1956; Doris, 1911-19; Clara, 1880-1952;
Inf. of Henry and Clara, born February 28, 1905; Inf.
of Henry and Clara, (No date).
Hamilton, Herbert R., 1869-1949; Lura B., 1867-1953.
Hardy, Miles E., son of J. P. and H. E., April 21, 1873, aged
1 year, 7 mos., 28 das.; Myrtic, dau. of J. P. and H. E.,
February 27, 1879, aged 5 years, 25 das.



- Hawkins, Isabelle, wife of J. W., died March 3, 1880, aged 22 yrs., 10 mos., 13 das.; Annabel, dau. of I. and J. W., died June 25, 1880, aged 4 mos.; James, died March 11, 1892, aged 69 yrs., 4 mos., 11 das.; Janet, wife of James, (No date)
- Haymaker, Frankie H., son of F. H. and H. E. February 14, 1872-March 30, 1872.
- Jacobs, Mary L., 1856-1954
- Johnson, Lucretia F., August 4, 1903, aged 67 years, 10 das.; Phelps, February 14, 1896, aged 64 yrs., 10 mos., 16d.
- Jonc, Minnie E., 1875-1956
- Logan, Tobias, died July 24, 1898, aged 78 yrs., 8 mos., 17 das. Eliza J., wife of Tobias, died December 25, 1894, aged 74 years, 4 mos., 1 da.
- Leonard, Mark D., son of H. and H. L. June 27, 1875, aged 14 yrs., 5 mos., 8 das.; Morgan, died October 20, 1892, aged 59 yrs., 5 mos., 13 das.
- Linhart, Custer C., 1892-19__; Grace Lee, 1893-19__; Jesse B., 1921-1934; Marvin, June 12, 1915-October 12, 1918; Vernon, Co.Pfc.Etry, Div. 784 AAA AW.En. CAC. WWII, January 7, 1920-March 5, 1954; Adam, October 30, 1889, aged 80 yrs., 8 mos.; Elizabeth 88 years; James, 52yrs.
- Louthan, Habel R., February 11, 1908, aged 7 years, 11 mos.; 25
- Martin, George, January 20, 1826-March 31, 1904; Susanna D., wife of George, May 24, 1828-January 3, 1900; Albert, son of George and S. D., died October 15, 1877, aged 17 years, 10 mos., 23 das.; John, son of George and S. D., died May 4, 1873, aged 22 years, 7 mos., 5 das.
- Maggart, Donna Rae, 1936-1945.
- Minor, Maurice A., 1941-1953.
- Moore, James H., March 31, 1848-January 5, 1911; Rebecca J., his wife, December 14, 1847-September 10, 1921; Gilbert, son of J. H. and R. J., died November 4, 1880, aged 1 mo., 5 da.; Nora A., dau. of J. H. and R. J., died September 19, 1886, aged 7 years, 11 mos., 24 das. Fertha I., dau. of J. H. and R. J. died September 22, 1886, aged 2 years, 9 mos., 6 das.
- Pickens, Elizabeth, 1833-1930.
- Wigley, Infant of Clifton, September 12, 1940, aged 9 mos.
- Robertson, Isabell, wife of Andrew, died October 30, 1884, aged 69 yrs., 2 mos., 24 das.
- Simpson, Elizabeth, died April 7, 1910, aged 82 yrs., 9mos., 26da.
- Seale, Robert, August 19, 1891 aged 77 yrs., 3 mos., 15 das.; Maria, his wife, died July 20, 1896, aged 74 yrs., 1 mo. 17 das.; John, died April 19, 1904, aged 51 yrs., 8 mos. 28 das.; Susie Wallace, died November 20, 1874, aged 26 years, 3 mos., 22 das.; Jennie, died November 14, 1871 aged 19 years, 4 mos., 22 das.
- Stanforth, Emerson H., May 16, 1862-February 20, 1883.
- Stone, Arthur, 1874-1904; Etta F., 1872-1947
- Stinson, Armina B., dau. of W. H. and Elizabeth, February 5, 1885, aged 5 yrs., 5 mos., 13 das.



- Slater, Jessie E., 1873-1947; William, 1839-1909; Margaret, 1848-1926; Inf. son of Wm. and M., March 13, 1881-September 3, 1882; Inf. son of Wm. and M., October 7, 1886-December 4, 1886; Benjamin H., 1887-19.
- Thornton, Charles M., 1859-1947; Sarah M., dau. of J. W. and N. December 8, 1881, aged 24 yrs., 8 mos., 13 das.; Jesse W., June 16, 1887, aged 60 yrs., 6 mos., 29 das. Margaret, December 24, 1888, aged 59 yrs., 3 mos., 23 das.; Thomas M., March 25, 1857-March 29, 1915.
- Troyer, Mary Ever, wife of Nicholas, January 4, 1834, October 21, 1918; John H., October 25, 1852-September 5, 1883; Elizabeth, July 18, 1856-December 18, 1878; Mary Ann, 1858-1943.
- Tucker, John T., February 15, 1887; Laura E., April 24, 1885-August 18, 1831.
- VanNye, Dr. Charles, 1841-1912, Co. K., 23rd Mo., Inf.; Mary Ella, 1854-1930; Indiana Wynn, February 13, 1852-December 3, 1881; Lemy S., son of Charles and India, died August 17, 1880, aged 6 mos.
- Wallace, Charles H., November 5, 1840, May 17, 1919; Catherine, his wife, November 4, 1848-July 14, 1940; Inf. dau. of C. H. and C., October 8, 1880-November 14, 1880.
- White, Charles W., January 22, 1844-May 26, 1930; Mary F., January 31, 1845-December 2, 1921; Hiram, 1836-1877; Elizabeth, his wife, 1846-1921; Children of C. W. and M. F.: Eddie E., died March 23, 1869, aged 7 mos., 8 da. Clara Edith, died May 7, 1874, aged 4 yrs., 2 mos., 24 da. Effie, died December 8, 1887. Katie Ada, died November 1, 1878, aged 4 yrs., 7 mos., 28 das.; Charles William, died November 14, 1883, aged 3 yrs., 4 mos., 14 das.

Ogle

Located on the Old Ogle Farm, southeast of Erowing.

- Fivens, Mary F., wife of George T., June 24, 1859-March 30, 1927.
- Hawkins, Strauder C., February 3, 1893, aged 34 yrs., 3 mo. 5 da.
- McClure, Mary F., dau. of J. S. and F. E., died Jan. 21, 1862 3yr
- Ogle, Christine R., wife of John, August 10, 1836-August 18, 1897
John, March 1, 1833-January 18, 1903; Elender, wife of David, November 25, 1803-August 25, 1879; David, November 12, 1802-December 9, 1885; Fannie, April 2, 1831-July 6, 1911; Jane, August, 1841-January 26, 1909.
- Reed, Eugie, dau. of J. D. and L. F., died June 12, 1897.
- Yoakum, Sarah, wife of George, September 12, 1811-September 18, 1881-; George, February 23, 1809-February 18, 1883.



Located southeast of Browning, Mo., on the northeast quarter of section twenty, township sixty, range twenty. The first interment was in the year 1841, and the body was that of Elvin F. Jenkins.

- Alexander, George Gose, March 28, 1842-December 6, 1925; Belle, his wife, June 25, 1848-January 6, 1936.
- Arnold, J. H., January 1, 1843-December 24, 1909; Samantha S., his wife, died February 23, 1906, aged 55 yrs., 6 mos., 24 das.
- Bennett; Sharon Kay, May 1, 1954-February 2, 1957.
- Biswell, Frank L., 1870-1937; Eva N., 1869-1947; David W., March 7, 1844-October 11, 1882; Emma Frances, November 28, 1850-May 25, 1927; John W., 1859-1924; Lee N., 1893-1924; Jonathan H., October 29, 1830-December 13, 1903; Susan Haines, his wife, January 17, 1837-October 26, 1908; Tommy J. and little children of J. H. and Susan: J. D., died October 8, 1883, aged 3 yrs., 6 da. Y. J., died September 23, 1883, aged 7 yrs., 5 mos., 16 das.
- Bolling, Baby May, Inf. dau. of E. D. and S. C., January 27, 1887-February 14, 1887.
- Pradshaw, Mildred Lorraine, 1922-1934.
- Bundies, Lizzie E., March 11, 1877-December 14, 1933; Edward P., December 26, 1868-July 13, 1951.
- Burwell; Jesse D., 1883-1947; Alpha M., 1887-1927; Willis C., 1880-1944.
- Butcher, Debbie; wife of G. D., died August 21, 1838, 74 yrs., 3 mos., 16 das.
- Carter, Guy T., 1891-1938; Flossie, wife of G. T., May 2, 1893-February 20, 1923; Harold D., 1910-1935; Leticia Haynes, September 23, 1854-February 7, 1913; Lawson E., September 10, 1850-June 23, 1918.
- Christy, Charles Edward (Skees), 1927-1949; Phillip W., June 10, 1815-March 28, 1891; Nancy L., wife of P. W., August 25, 1814-March 24, 1908; Joseph B., March 5, 1843-December 21, 1914; Mary, his wife, July 7, 1850-December 15, 1881; Sarah, his wife, July 13, 1848-July 30, 1922; George, January 30, 1872-February 14, 1937; Erma L. Price; his wife, December 4, 1866-June 23, 1921; Bertha E.; dau. of Mr. and Mrs. George Christy, January 23, 1894-March 17, 1894; Lena L., February 15, 1881-December 31, 1893; Mary, wife of J. L., (No date); Albert L., August 14, 1865-June 24, 1902; Charles E., August 4, 1901-November 5, 1903; Edward D., 1869-1935; Maude M., 1871-; James N., 1949, aged 21 das.
- Clark, Ogie I., August 1, 1872-July 13, 1890.
- Cordray, Albert H., 1879-1934; William T., February 6, 1870-June 25, 1940; Mary F., March 11, 1869-.
- Crowdus, Lucinda P., June 3, 1834-February 6, 1889.



Genius
(2)

- Cotter, Elizabeth, born in Augusta, G., January 7, 1814-February 3, 1903; Stephen L., born in Green Co., Tenn., August 19, 1814-April 25, 1889; Robert A., December 9, 1880-May 30, 1906; Caleb C., April 17, 1840-January 13, 1911; Martha E., August 6, 1846; David D., August 15, 1875-July 6, 1889; Andrew J., March 31, 1842-October 31, 1920; Nancy E., his wife, August 5, 1848-March 30, 1912; Norman E., son of H. E. and Bessie, August 23, 1916, aged 1 da.; Ch. of A. J. and M. W.: Purla, (Couldn't read); Cora Lee, died November 20, 1881 aged 8 mos., 2 das.
- Curl, Alexander L., April 14, 1828-September 13, 1908; Sarah, his wife, January 30, 1832-June 3, 1888.
- Drake, Francis Earl, 1889-1940; Edith Lillian, 1889-19__;
Matherine, 1825-1895; Dora E., dau. of W. F., and H. A., died November 31, 1891, aged 7 yrs., 1 mos., 27 das.; William Francis, 1847-1916; Hannah H., his wife, 1852-1914; Harvey H., November 24, 1892-December 19, 1953, Pvt 44th Casual Co., W. W. II.; Iva C., December 14, 1890
- Duncan, Edward A., no. Pvt., 129th Field Art., 35th Div., W. W. I., May 17, 1890-May 12, 1952; James S., born in Elgin Co., Scotland; April 10, 1847-April 26, 1904; Mary A., wife of J. S., May 31, 1862; Sallie E., wife of J. S., died May 27, 1885, aged 24 yrs.; Arthur, August 20, 1881-May 17, 1902.
- Dunkin, John H., September 27, 1843-June 29, 1932; Mary, his wife, January 9, 1843-February 24, 1917; John, died February 15, 1884.
- Genius, W. S., 1861-1948; Ida, 1880-1941; Joel T., July 4, 1849-April 1, 1932; Sarah J., his wife, December 29, 1849-December 23, 1926; Kitty C. wife of W. S., December 26, 1861-January 19, 1912; Herle, son of W. S. and Kitty, 1885-1887; Johnnie, son of J. T. and S. J., died July 2, 1880, aged 4 yrs., 3 mos., 22 das.; Rollo, son of J. T. and S. J., died September 19, 1890, aged 2 yrs., 12 das.; John, died June 1, 1883, aged 79 yrs., 9 mos., 16 das.; Eliza, his wife, died August 19, 1908-aged 90 yrs., 5 mos., 3 das.; Susan M., dau. of J. and E., died August 6, 1871, aged 14 yrs., 8 mos., 1 da.
- Alliott, Thomas S., 1864-1945; Eliza A., 1873-19__.
- Fields, Emmett F., 1863-1922; F. Gertrude, 1872-1933; Eunice M., 1864-1889; Wayne E., 1895-1932.
- Fleming, America, 1862-1944; Florra, 1857-1932; Carrie, 1853-1892; Inf. dau. of F. A. and America, September 30, 1908; Blaine, 1892-1950; Bessie, 1893-; F. A., Inf. son of G. F. and F., May 2, 1913; Curtis A., 1860-1945; Ruth, dau. of G. F. and Bessie, May 2, 1913, October 11, 1923; Evah L., 1875-1948; James T., February 25, 1835-January 2, 1922; Adeline, his wife, June 16, 1835-July 10, 1894; Jane, his wife, October 3, 1863-January 20, 1924.



- Fleming, Margaret M., wife of J. P., October 23, 1871-April 1, 1925; James E., August 6, 1870-December 25, 1940.
- Franklin, Minnie C., died December 23, 1938, aged 40yrs., 8, 11d.
- Garber, Samuel L., August 10, 1813-November 10, 1888; Letha, wife of Samuel, February 23, 1812-November 22, 1891.
- Garrett, Irene A., April 11, 1893-April 28, 1947.
- Garthwait, Noel, son of W. and D. H., died December 11, 1891.
- Gibson, John H., 1872-1942; Virginia, 1876-; Infants of R. L. and H. A., Glenn W., 1900-1932; Ethel, 1896-1907.
- Glaze, Robert DeVon, 1919-1949; Richard Adrain, 1881-1938; Jonnie M., his wife, 1880-.
- Gooch, Paul L., January 20, 1892-May 1, 1945; Opal E., July 30, 1895; Rebecca G., wife of J. W., died November 20, 1892, aged 47 yrs., 7 mos., 21 das.; Willis E., 1878-1944; Georgia, 1878-1955.
- Green; R. F. (Bob), 1933-1953; J. M. Jimmy, 1937-1951.
- Halcy, Daniel G., 1889-; Grace A., 1897-1956
- Harris; Lester H., 1878-1942.
- Harvey, Charles Earl, son of J. B. and D. R. October 24, 1895, aged 7 rs., 3 mos., 24 das.; Dorcas R., 1868-1952; Joseph B., 1866-1932; John G., December 14, 1876-May 25, 1936; Edna L., April 10, 1882; John W., May 24, 1834-November 25, 1911; Amanda A., his wife, April 3, 1836-April 14, 1916.
- Hatch, Charles, died November 18, 1892, aged 41 yrs., 8 mos., 10 das.; Isora F., July 7, 1855-December 18, 1909; Charles E., son of C. and I. F., died April 12, 1893, aged 19 yrs., 4 mos., 12 das.; Nora E., June 22, 1876-December 24, 1898; Minnie R., dau. of W. H. and R., died September 7, 1880, aged 1 yr., 8 mo., 23 das.; Bennie and Lula, written on sandstone rocks; William H., January 13, 1846-April 23, 1918; Rachel, his wife, February 17, 1849-January 16, 1934; Abbie H., dau. of L. R. and S. E., died July 18, 1837, aged 2 yrs., 3 mos., 8 das.; John, died February 18, 1906, aged 88 yrs., 8 mos., 23 das.; Jane, his wife, May 22, 1892, aged 82 yrs., 11 mos., 22 das.; Edwin, 1848-1941; Sarah E., 1851-1936; Eliza J., October 18, 1840-May 1, 1913.
- Haynes, Sarah H., died May 20, 1913, aged 84 yrs., 11 mos., 5 das.; John, died July 30, 1892, aged 69 yrs., 9 mos., 18 das.
- Helmer, M. G., wife of F., died December 24, 1881, 72 yrs., 9 mos., 13 das.
- Hendrick, Elizabeth T. Shedrick, October 9, 1864-May 7, 1910. Jan., 1885-1922.
- Holdings, Tolmians, born in Scott Co., Ky., January 21, 1831-December 31, 1891; Georgie P., dau. of L. and J. E., died February 4, 1880, aged 22 mos., 13 das.
- Haymaker, Edward Grant, 1868-1948.
- Harst, William E., died February 21, 1888, aged 32 yrs., 11, 15.



- Havens, Samuel P. January 18, 1909; Mary Pearl, April 13, 1909-
January 24, 1938; Martha Ann, January 24, 1938;
Linda Thane, Inf. of T. M. and C. L., November 5, 1939.
- Jenkins, Wellington, born March 10, 1821-February 14, 1898.
- Jones, H. Clay, 1866-1943; Rosella A., 1866-1950; Benjamin L.,
September 26, 1861-June 2, 1911; Elisha E., 1868-1948;
Elijah A., died January 16, 1898, aged 62 yrs., 1 mo.,
15 das.; Levenia H., his wife, January 25, 1842-March
7, 1925; J. W., 1863-1927; Josephine, 1871-1953.
- Kuifong, Sarah C., 1869-1954; Jesse J., 1870-1929.
- Kille, Harold E., 1919-1945.
- Lambert, Barclay J., 1867-; Donna C., 1867-1947; Beryl W.,
1905-1950.
- Lay, Joseph D., March 27, 1847-September 29, 1912; Lancy C.,
his wife, December 24, 1846-May 24, 1908; Samuel C., June
3, 1880-July 22, 1942; Versa V., November 11, 1881-June
11, 1935; Willie, son of J. D. and M. C., died September
17, 1887, aged 7 yrs., 9 mos., 27 das.; Della A., dau. of
J. and M., September 22, 1882-February 3, 1891.
- Lantz, Children of G. and S. L.: Inf. dau., died May 13, 1908,
aged 4 das.; Marie, died November 2, 1902, aged 7 yrs.,
23 das.; Little Horace, April 1889-March 2, 1891;
Grant, 1864-1930; Sarah L., 1870-1942; Sigmund C., 1891-
1957.
- Lindsey, Cassie, dau. of J. W. and M. J., May 14, 1891, 15, 11, 5
- Long, Alvin H., 1883-1951; Malachi, 1846-1923; Martha, his
wife, 1850-1925.
- Martin, Matthias, May 12, 1840-October 21, 1910; Sarah, Febru-
ary 28, 1840-December 31, 1929.
- Mairs, Alva C., 1881-1882; John, June 11, 1849-November 11,
1928; Permelia H., December 2, 1856; Mable P., July 30,
1895-August 24, 1896; Inf. dau., April 25, 1894.
- Hiller, Stephen Dale, 1956-1956.
- Minor, A. B., March 11, 1883, aged 23 yrs. 1 mos., 17 da.
- Moore, Lena F., dau. of A. A. and L. E., October 20, 1890-1, 11
- Morris, Iva Venable, 1889-1922
- Mullins, John D., 1875-1952.
- McMillen, Iva May, dau. of Wm. and E. M., died October 10, 1889.
- MacKenzie, Agnes, 1842-1928.
- Pickell, George A., May 23, 1859-August 30, 1913; Katherine,
May 10, 1860-May 28, 1935; E. W., February 7, 1855-
September 6, 1939; Pauline, wife of D. P., died Aug-
ust 6, 1896, aged 74 yrs., 9 mos., 19 das.; Daniel,
died December 19, 1893, aged 76 yrs., 7 mos., 25 das.;
Henrietta, wife of Wm. M., November 9, 1889, aged 34
yrs., 9 mos. 1 da.; Inf. of W. H. and H., December 31,
1875; William Wiley, son of W. H. and H., August 2,
1884, aged 1 yr., 1 mos. 23 da.



- Newton, Abbie Clare, dau. of J. and M. E., July 22, 1890, 1 yr., 28 das.; John J., February 13, 1892-August 24, 1892; Martha, 1858-1908; John, 1849-1916; Martha E., wife of J. P., May 27, 1857-August 3, 1908.
- Nervell, Carl C.; September 14, 1880-June 4, 1956; Eva Elsie, June 20, 1885-January 3, 1953; Twins of C. C. and Eva E.: Nathalca, January 4, 1910-March 2, 1910; Nolan I., January 4, 1910-February 27, 1910.
- Oaks; Carrie A., wife of L. H., died May 7, 1910, aged 37, 11, 9
- Ogle, Ira, 1879-1898; Lovella, 1855-1930.
- Owen, Frances, wife of W. T., November 18, 1908, aged 78 yrs., 7 mos., 4 das.; Wm. T., May 29, 1892; aged 77 yrs., 3, 7.
- Pax, Eugene F., February 16, 1874-September 18, 1889; Amelia, March 6, 1838-July 3, 1891; John, May 18, 1830-February 3, 1901.
- Penn, Annie G., dau. of C. and E. A., died April 2, 1879, 2, 9, 18
- Porter, Agnes Gilson, 1898-1923.
- Reed, Guy M., August 13, 1882-; Mary E., December 15, 1849-February 17, 1911.
- Richardson, Mary S., 1820-1893.
- Rinehart, Alice L., 1881-1949; Mary H., 1888-1947; Levi, 1843-1929; Sarah C., 1851-1930.
- Robinson, Dr. Wm. R., June 14, 1811-November 7, 1884; Dorcas R., wife of W. R., February 28, 1817-July 24, 1896.
- Sampsel; John, died December 11, 1881, aged 70 yrs., 11 mos., 11d.
- Schrock, Laura E., wife of J. W., November 11, 1877, May 6, 1904; Hollie, wife of S. S. August 27, 1892, aged 25 yr., 26 da.; Samuel Sigmund, November 24, 1864-November 11, 1943; Tena V., dau. of S. S. and H., died September 8, 1892, aged 1 yr., 28 da.
- Seale; Thomas W., 1858-1947.
- Smith, Children of Herman and Letha: Ronald H.; 1936-1937; Lindy E., 1941-1941; Etta, wife of J. J., July 6, 1877-November 10, 1924; J. J., 1870-1943.
- Spencer, Willard H., August 6, 1848-September 9, 1927; Margaret J. Cotter, his wife, September 26, 1845-February 1, 1925.
- Stephenson, Inf. dau. of W. T. and A. L., died July 15, 1887; aged, 1 hour; Little Pit, son of W. T. and A. L., died January 5, 1890, aged 1 year, 5 das.
- Taylor, Sarahell, wife of G. W., September 22, 1848-September 9, 1887; George W., July 6, 1843-February 1, 1920; Laura, Etta, March 12, 1877-April 29, 1950; Georgie, dau. of G. E. and S. T., died December 16, 1898, aged 4 yrs., 5 mos., 8 das.; Verta Ann, dau. of J. C. and Caroline, October 8, 1882, aged 7 yrs., 8 mos., 16 das.; Caroline wife of J. C., died June 15, 1898, aged 58 yrs., 5 mos. J. C., died February 14, 1917, aged 75 yrs., 10 mos., 4 das.; Isaac R., February 2, 1807-September 18, 1884; Charles W., 1878-1947; John B., April 26, 1868-January 3, 1956; Mary G., December 26, 1870-February 10, 1946.



Thornton, David, September 10, 1821-March 21, 1906.
Thurlo, Vane C., 1898-1945.
Truitt, Linda Jean, November 21, 1945.
Tully, Mary A., wife of Tandy, November 17, 1839, 12 yrs., 6, 1
Vanscogran, Thomas A., 1861-1930; Rosa E., 1866-1952.
Venable, Earl P., 1891-1913; Forrest, son of T. E. and H.,
died October 8, 1893, aged 5 mos., 22 das.
Vincill, Eliza J., wife of J. P., September 20, 1837-34yrs. 11, 23
Woodward, Sulda Ogle, 1877-1949; Freda, 1897-1900; George R.,
January 4, 1903, aged 57 yrs., 3 mos., 29 das.;
Hannah, February 16, 1914, aged 57 yrs., 8 mos., 22
das.; Maggie L., September 4, 1890, aged 43 yrs., 10 mos.
26 das.
White, George L., 1881-1947; Rebecca E., 1873-1938; Etta A.,
1901-1942.
Wise, William, May 11, 1893, aged 37 yrs.

Haseville

Located west of Browning, Mo., and a half mile east
of Haseville, Mo.

Allen, David S.; October 20, 1848-October 20, 1912; Amanda C.
McHickle; April 14, 1856-January 31, 1911.
Brownlee, Joel, October 14, 1833; aged 65 yrs., 5 mos., 19 das.;
Eliza S. Evans, wife of J. L., June 13, 1827-December
26, 1907; Children of J. L. and S. L.: Grant, died
April 13, 1907, aged 6 yrs., 3 das.; Eska B., died
October 15, 1895, aged 1 yr., 1 mo., 19 das.
Bartow, Rosa Mae, 1880-; Silas J., 1874-1951
Barnett, Gladys Marie, dau. of Jessie and Goldia, May 21, 1916-
July 24, 1916.
Coulter, Thomas, February 18, 1831-Diana, his wife, February 7,
1839-.
Crookshank, Harriett T., February 6; 1830-April 15, 1899;
William H., February 17, 1826-June 24, 1903.
Crump, Clyde Fernan, son of John and Iva H., May 25, 1903-
December 31, 1917; John, 1871-1949; Myrtle, 1873-;
Richard W., October 20, 1838-May 10, 1902.
Cawood, Melsey A., 1867-1949; Sarah Emma, 1865-1948; Joseph
H., May 15, 1836-March 7, 1912; Mary E., February 14,
1848-February 12, 1920.
Calvin, John, May 12, 1835-March 24, 1885; Mary J. Brawner,
his wife, August 16, 1842-October 18, 1911.
Crooks, Lowell C., December 16, 1925-December 17, 1928; Billie
Lee, June 18, 1928-February 4, 1929.
Deolan, Johnnie C., July 6, 1836, aged 23 yrs.
Davis, Emma Frances, 1856-1931; Children of J. S. and E. F.:
Nova; died March 4, 1880; John L., died September 21,
1878, aged 1 da.; Sarah Lemorah, died February 24, 1882,
aged 7 mos., 24 das.



Haseville

(2)

- Duffield, Ray, died February 20, 1900, aged 22 yrs., 1 mo., 20 das.; Claude, November 22, 1882-January 26, 1883; Adam G., 1848-1939; Sarah G., 1849-1935.
- Dennis, Anne, 1861-1937; Henry, 1862-; George E., January 7, 1894-October 2, 1911.
- Doty, William Alexander, 1860-1915; Elizabeth, wife of W., October 8, 1827-April 17, 1901.
- Funk, John Henry, August 29, 1886-July 22, 1955; Mary Ollie, April 17, 1881.
- Foster, Samuel H., 1844-1937; Anna Allen, 1852-1923; Bessie May Doty, September 20, 1889-April 13, 1946.
- Fleshman, Sarah H., wife of W. H., died January 16, 1882, aged 26 yrs., 3 mos., 20 das.
- Farnsworth, Inf. son of D. W. and A. S., April 14, 1881; Linn, May 13, 1891-June 8, 1893; David W., 1860-1943; Adeline, 1860-1939.
- Grabast, Henry E., 1855-1944; Thursa A., 1861-1936; Children of H. E. and T. A.: Charles, died May 30, 1903, aged 3 mos., 4 das.; Glenn W., died December 1, 1901, aged 15 yrs., 4 mos., 14 das.; H. A., died September 16, 1890-December 25, 1906.
- Gooch, Bessie A. Bartow, wife of W. A., October 28, 1899-February 3, 1918.
- Gillespie, Ezra C., 1831-1922; Forrest G., 1907-1908; Claude, January 1, 1881-July 26, 1894.
- Graham, Sallie, wife of Lewis, January 14, 1916, aged 41 yrs., 9 mos., 1 da.; Inf. son and dau. of Lewis and Sallie; Allie B., died March 24, 1895.
- Holser, John V., September 27, 1862-September 28, 1942; Olive A., May 2, 1868-December 30, 1938; Edna E., dau. of J. V. and O. A., died August 23, 1899, 11 mos., 9 das.; Infant son, 1905; John R., June 15, 1901-January 18, 1943.
- Hiskett, Ralph R., May 5, 1876-March 21, 1904; May Shipley, May 6, 1882-July 25, 1919; Sarah T., April 2, 1899-aged 54 yrs., 4 mos., 12 das.; Charles S., June 5, 1910, aged 22 yrs., 3 mos., 28 das.; Frank B., April 24, 1893, aged 21 yrs., 2 mos., 11 das.
- Hull, Cecil H., dau. of Dr. G. T. and D. E., August 1, 1890, aged 4 mos., 14 das.
- Hullett, Lewis, October 2, 1884, aged 64 yrs., 8 mos., 12 das.; Mariah, wife of Lewis (No date)
- Jerome, Henry T., December 27, 1869-June 27, 1949; Nancy E., July 28, 1867-March 19, 1952; Benjamin A., January 29, 1893-September 8, 1943; Lillian, October 26, 1899; Wilbur, son of E. A. and L., born and died March 5, 1917.
- Johnson, Herbert, son of R. E. and H. E., died July 6, 1902, aged 10 yrs., 4 mos., 2 das.; Earl, June 24, 1881-June 11, 1883; Noah, April 25, 1819-December 15, 1891; Emely E., his wife, November 1, 1829-June 9, 1883.



- Keeling, Twin daus. of M. B. and Virginia: Jean Ann, Sept-
ember 4, 1951, Joy Lou, September 4, 1951.
- Keithley, Lela Gwendolyne, Inf. of T. M. and R. V., Aug. 14, 1915
- Keys, Hollie M., June 20, 1904 aged 29 yrs.
- Losh, William, October 20, 1868-January 1, 1918; Frances J.,
his wife, May 25, 1869; Adam T., 1886-1938; Henry T.,
1852-1923; Josephine, 1872-1930; 3 Infant sons.
- Leslie, William R., 1860-1938; Amy C., 1866-1939.
- McKickle, Francis G., 1865-; Angeline H., 1863-1950; Lindel,
Pvt. 5th Regt., U. S. Marines, 2nd Div., March 19,
1931-aged 34 yrs., 3 mos., 24 das.; Lorenzo, December
22, 1903, aged 94 yrs.; Martha E., September 24, 1829-
February 21, 1912; Marietta, dau. of H. and L., March
20, 1858-April 16, 1929; Oliver H., May 26, 1957, aged
97 yrs., 2 mos., 22 das.; Veda, wife of M. B., 1894-
1932; Clara F., wife of M. P., 1890-1919.
- Massey, Jeremiah, September 10, 1898, aged 83 yrs., 10 mos. 26 das
- McClellan, Sarah J., 1867-1951
- Martin, . H., Co. E., 13th Motor Cap.
- McCarty, Abigail, December 23, 1814-May 20, 1884.
- Morris, Prudence Estella, dau. of W. H. and Mary J., January 10,
1882, aged 9 yrs., 6 mos., 24 das.
- Martin, Eustatious, 1868-1929; Katherine F., 1875-1951.
- Forville, Thomas H., 1860-1935; M. Eliza, 1871-1925; Jesse E.,
son of T. H. and Hollie T., died December 6, 1901,
aged 18 yrs., 1 mo., 10 das.
- Forvell, Warner E., September 26, 1866-September 20, 1934;
Cora E., his wife, June 30, 1875-March 21, 1902;
Ethel F., dau. of . E. and C. E., November 24, 1898;
aged 6 mos., 19 das.; James O., March 17, 1864-July
10, 1935; Maggie, March 30, 1870-April 17, 1924.
- Nichols, Daniel ., May 7, 1856-May 11, 1937; Martha Jane,
March 10, 1862-March 12, 1937; Rudy Lester, son of
W. S. and R. H., March 13, 1895-September 9, 1899.
- Painter, Eliza C., son of W. H. and M. E., January 2, 1894,
aged 22 yrs.; 10 mos., 5 das.; F. H., died May 18, 1904,
aged 59 yrs.; 9 mos., 3 das.; Mary E., wife of W. H.,
September 3, 1898, aged 48 yrs., 6 mos., 2 das.
- Petty, Elvina, wife of James F., January 22, 1843-April 17, 1923.
- Pixler, Joseph; June 17, 1832-June 10, 1891; Amanda, his wife,
June 9, 1839-February 4, 1921.
- Pondergast, Minnie Katherine, 1877-1944.
- Scanan, Mary Wineva, February 23, 1909-November 1, 1914; Mary
Ethel Nichols, January 12, 1885-March 16, 1954.
- Sayers, Mary Elizabeth, dau. of Owen and May, January 10, 1921-
January 17, 1924; Margaret E., 1867-1953; John C., 1861-
1944.
- Scott, Elsie Wallace, wife of H. W., 1877-1910; Alfred, 1898,
aged 12 das.



- Smith, Roy Lee, 1917-1941; Albert S., August 17, 1880; Lula May, January 10, 1887-May 6, 1953; Mary E., August 29, 1855-April 2, 1923; Daniel, April 12, 1834-May 10, 1906; Mary E., wife of George H., died August 8, 1903; Vilma I., dau. of G. I. and Gertrude, March 5, 1911, aged 9 mos. 9 das.; Inf. dau. of G. H. and M. E., November 27, 1894; Rosa M., April 26, 1881-March 25, 1955; Henry T., April 17, 1871-June 10, 1951.
- Shafer, Clara, July 26, 1873-January 20, 1942; Christian, November 20, 1868-August 29, 1954; John, August 20, 1862-October 3, 1918; James, March 20, 1866-July 17, 1941.
- Searcy, Bennie J., May 31, 1896-May 9, 1918, 43rd Rg., Co., 164th D. E.; Nova W., 1866-1927; Rolina E., 1868; Arthur R., son of Frank and Eva, June 25, 1903-January 19, 1919.
- Schlotterback, Jacob B., November 10, 1858-May 10, 1934; Margaret J., December 26, 1857-April 9, 1910.
- Stanberry, A. O., 1874-1955; Martin E., November 14, 1841-January 25, 1903; Emiline, January 12, 1846-March 1, 1900; Walter, son of H. E. and E., died January 17, 1882-12d
- Tromerhouser, Sophia, June 23, 1870-October 18, 1956; John, January 19, 1865-January 8, 1948; Elizabeth A., dau. of John and Sophia, died April 19, 1896, aged 4 yrs.; 4 mos., 29 das.
- Todd, Robert C., August 8, 1863-September 26, 1926; Cynthia, his wife, November 8, 1864-August 25, 1948.
- Wood, Pearl W., 1891-1956; Benona, 1858-1943; Emily F., 1859-1932; Wm. Grover, 1884-1955; James R., No. 110th Sanitary Tn. 35th Div., U. S. I, September 24, 1886-December 11, 1950; William A., November 9, 1939.
- Wheelbarger, William Roy, Jr., April 9-May 2, 1944.
- Whitlock, George R., 1880-1953.
- West, Arrahlee C., son of A. J. and C. I., 1916-1920.
- Wingate, William J., March 28, 1839-February 5, 1916.
- Wolf, Sarah E., 1915-1941; P. H., March, 1840-April, 1901; Carrie E., his wife, September 18, 1831-May, 1915; Frank Emmett, son of P. H. and C. E., died April 7, 1881; Chester A., December 4, 1874-December 5, 1945; Effie E., September 23, 1875; Fred E., March 23, 1870-June 4, 1913; Jessie A., wife of P. H., November 16, 1881-April 27, 1906; Mary Prather, wife of H. J., November 9, 1872-January 8, 1913; Gwendoline E., dau. of H. J. and M. E., December 4, 1895-September 4, 1898.
- Young, William James, son of J. T. and E. L., February 7, 1895, December 19, 1897; Albert L., 1871-1954; Emmett, 1884-; Herman A., 1877-1936; Minta L., 1887; Andrew J., died March 23, 1900, aged 55 yrs., 3 mos., 6 das.; Melissa Jane, wife of A., died January 22, 1888, aged 37 rs., 7 mos., 12 das.; Katheryn Owens, 1912-1937; Richard Morris, March 4, 1909-August 7, 1909.



Young, Alberta Maxine, May 29, 1916-November 14, 1916; Anna H., January 4, 1882; William R., September 5, 1879-May 13, 1950; John H., 1850-1925; Nancy W., his wife, 1849-1929.

Smith

Located on the Harley Smith Farm, northwest of Shafter; southeast quarter of the southwest quarter section 23, township 40, range 22.

- Brooks, Inf. son of H. S. and Amelia, September 26, 1880-November 23, 1880.
- Buerk, Hugo, November 13, 1822-October 9, 1910; Christina, his wife, March 12, 1832-June 9, 1899.
- Bruce, Oskor P., son of O. I. and M. J., died November 17, 1873
- Chalfont, Thomas P., died May 8, 1891, aged 34 yrs., 11 mos., 5 da.
- Gillespie, Thomas, June 10, 1835-July 27, 1867; Margaret J., February 14, 1838-February 12, 1915; Marie, granddaughter of T. and M. J., died September 14, 1876, aged 1 yr., 10 mos., 4 das.; Nancy H., September 1, 1884-February 17, 1902; William, May 4, 1831-October 12, 1878; T. R., March 16, 1853-October 12, 1880; H. S., 1842-1921; Mary J., his wife, 1863-1913; Sarah E., died July 1, 1873-aged 54 yrs.
- Higgenbotton, Mary J., August 6, 1847, aged 3 yrs., 2 mos.
- Lesley, George, December 18, 1849-August 29, 1919; Maria, his wife, January 31, 1852.
- Forvell, Freda, October 11, 1877-March 14, 1902; Henryetta, dau. of J. S. and L. P., died January 9, 1877, aged 5 yr., 9 mos., 8 das.; ch. of John T. and Mary: Hattie E., died July 26, 1881, aged 6 mos., 27 das.; Inf. of May 11, 1893.
- Smith, Anne J., dau. of S. C. and ..., died September 22, 1868, aged 11 mos., 4 das.; Calvin G., November 20, 1857, aged 32 yrs., 9 mos., 18 das.; Mariah J., died December 9, 1898 aged 78 yrs., 11 mos., 11 das.; J. Y., January 6, 1841-May 6, 1925; Mary O., his wife, October 27, 1841-January 24, 1917; T. F., 1851-1885; H. J., 1853-1923; Joseph R., July 17, 1840-March 11, 1923, Co. G., 18th Mo. Vol. Inf., Angelina, his wife, December 3, 1840-May 18, 1926; Eliza ..., dau. of D. C. and D., June 15, 1869, aged 1 yr., 6, 1
- Snyth, Robert, March 7, 1807, aged 78 yrs., 8 mos., 4 das.; Jane, wife of Robert, June 27, 1811-October 15, 1867.
- Hentron, Margaret E., died February 27, 1877, aged 19 yrs., 8 mos., 13 das.
- Young, Richard, died November 19, 1860, aged 19 yrs., 10 mos., 4 das.



Graveyard located on the Manley Buckman Farm, southwest of Purdin, Mo.

Cherry, Bertha and Birdie, daus. of G. A. and H. R., died June 14, 1874, aged 4 das.; George, died March 7, 1888, aged 72 years, 1 mo., 12 da.; Mary, wife of George, February 1, 1902, aged 69 years, 23 das.; William R., son of G. A. and Mary R., died December 10, 1879, 11 das Parthena, (Stone Broken); Margaret, dau. of G. A. and H. R., died March 26, 1852, aged 2 mos.

Coulson, Inf., 20 months

Kemper, Elijah, October 1, 1800-October 10, 1880; Mary E. Hacklin, wife of E. H., May 11, 1832-November 1, 1920; Enoch H., died August 28, 1895, aged 63 years, 5 mo. 3 da.

Dryden Graveyard, located southwest of Purdin, Mo.

Eckett, James, July 16, 1823-July 26, 1873; Elizabeth, wife of J., died June 22, 1857, aged 21 years, 5 mos., 19 das.; Martin, son of W. G. and S. J., February 1, 1882-January 30, 1884; Hollie Belle, son of W. and S., September 26, 1888, aged 2 years, 1 mo., 30 das;

Brown, Reuben P., September 13, 1803, aged 50 yrs., 8 mos., 12 da Rutho, September 26, 1907, aged 51 years, 5 mos., 21 das.

Fennett, Elma H. Dryden, wife of Arthur H., 1906-1931.

Dryden, Mat. C., December 29, 1844-February 23, 1904; Martha E., August 23, 1847-August 18, 1920; Sarah Berry, April 6, 1788-November 10, 1874; Willard, died December 21, 1858-aged 24 years, 2 mos., 3 das; Dr. W. J., died February 9, 1865-57 years, 10 mos., 25 das.; Martha H. wife of Dr. W. J., March 19, 1889-68 years, 9 mos. 26 das John A., 1851-1936; Mary J., 1855-1948; Dr. V. C. November 9, 1875-July 1, 1946; R. Henry, 1853-1924; Lula S. 1861-1939; David Clifford, May 17, 1849-February 18, 1915; Lucy Adeline; August 19, 1848-November 3, 1928.

Cassity, Alvah H., June 24, 1854-January 31, 1926; Nannie E., June 2, 1855-January 29, 1920

Flood, F., dau. of T. H. and A. J., 1861-1864

Purdin, Mat C., 1862-1935; Lida I., 1867-1937; William, October 23, 1900, aged 76 years, 5 mos., 6 das.; Louisa M., October 27, 1904-aged 82 years, 10 mos., 14 das.

Russell, Thomas and wife, Nancy Parish (No dates)

Snyder; Thomas H., son of E. A. and H. T. 1849, 1 year, 9m., 17d
Trumbo, Minasser A., September 15, 1801-December 4, 1881; Mary F., wife of G. W., August 22, 1904, 63 years, 3 m. 10 d. Charles W., March 31, 1864-November 29, 1921; George M. February 28, 1881-February 22, 1913; Mary A., wife of G. H., died April 1, 1855, aged 22 years, 6 mos., 14 das Henry A., died September 30, 1864, 1 year, 27 das. 2 mos William, died December 1, 1865, aged 7 mos., 16 das. Hannah, wife of H. A., died April 22, 1869-70, 5, 19

Westgate, Francis Dryden, 1889-1928

17 Wooden markers in a row.



Locat 1 southwest of Heckla, Mo.

- Acker, Harriett J. Campfield, wife of Henry, November 28, 1836-
 June 28, 1907; Henry, August 4, 1843-June 12, 1916.
 Agin, Robert, died December 31, 1872-aged 75 yrs., 3 mos., 28
 das.; Robert, September 3, 1797-December 31, 1872; Phoebe,
 consort of Robert, March 22, 1801-December 20, 1886.
 Forland, George W., son of John F. and Mary A., May 26, 1880,
 aged 21 yrs., 4 mos., 12 das.; Mary A., wife of J. F.,
 November 22, 1878, aged 56 yrs., 2 mos., 11 das.;
 John F., January 17, 1838, aged 66 yrs., 11 mos., 4 das.
 Clarkson, Dorcas, wife of G. H., January 18, 1894, aged 39 yrs.,
 9 mos., 9 das.; Annie, wife of G. H., May 7, 1889,
 aged 33 yrs., 21 das.; George Henry, August 6, 1852,
 aged 94 yrs., 10 mos., 8 das.
 Dail, Lillie A., dau. of J. H. and M. L., January 11, 1897,
 aged 19 yrs., 2 mos., 8 das.; Ralph, son of J. H. and
 M. L., January 28, 1894, aged 1 yr., 5 mos., 15 das.
 Fore, Silas A., October 19, 1888, aged 38 yrs., 10 mos., 22 das.
 Virgil E., son of S. A. and S. E., July 7, 1887, aged 4 yr
 Harvey, Eliza A., consort of Elihu P., July 3, 1841-August 2,
 1895; Everett E., 1871-1955; Nancy E., 1882-1943; Elihu
 P., January 25, 1897-; Jesse P., July 6, 1898-February
 27, 1904; Albert P., June 6, 1880-December 18, 1904;
 Maude, July 13, 1884-January 3, 1903; L. F., 1836-1922;
 Meline, 1858-1947; Ben F., 1889-1948.
 Harter, Christian, April 6, 1837-December 27, 1915; Mary C.,
 July 20, 1942-February 15, 1931; Jay H., July 14, 1890-
 April 9, 1916; Jennie, wife of G. E., January 22, 1867-
 May 8, 1907; Benjamin C., July 9, 1878-February 29, 1908.
 Johns, Sidney, March 20, 1893, aged 29 yrs., 11 mos., 2 das.;
 Benjamin, son of S. H. and D. J., March 6, 1889, aged
 10 das.; Dovie J., May 3, 1864-October 11, 1930; Henry
 Preston, November 10, 1870-January 13, 1904.
 Lilly, Barbara Hellen, May 6, 1858-May 22, 1902.
 Luyster, Huston, 1843-1922, Margaret, his wife, 1842-1907.
 Neal, Clinton W., Co. A., 42nd Mo., Inf.; James A., died Decem-
 ber 19, 1898, aged 87 yrs., 8 mos., 11 das.; Elizabeth,
 wife of J. A., died February 20, 1902, aged 79 yrs., 5 mos
 28 das.; William U., May 20, 1860-September 4, 1924;
 John J., July 9, 1902; aged 49 yrs., 2 mos., 4 das.; James
 E., son of J. and V. E., March 6, 1892-August 6, 1899.
 Randall, Quincy David, son of Felix and Sallie, Dec. 21, 1890-18yr
 Taylor, Charles W., died December 8, 1888, aged 26 yrs., 11 mos.
 13 das.; George A., March 26, 1896, aged 36 yrs., 2m. 25da.
 Wilkerson, Calvin W., January 2, 1890-October 10, 1955; Emma Z.
 November 9, 1887
 Wood, Rosa L., April 19, 1880-February 20, 1917.



Mundell

Located southwest of Browning, Missouri.

- Bennett, John, August 10, 1813-January 29, 1891; Cynthia, born November 15; 1816-August 9, 1897; Henry, son of John and Cynthia, died January 17, 1844, aged 5 das.; William, son of John and Cynthia, died December, 1850, aged 2 years; Infant dau. of I. H. and M., born July 29; 1872; Infant dau. of I. H. and M., born February 18, 1885; Inf. of G. H. and Mildred, September 24, 1900; G. M., March 1841; Ora A., 1879-1950; William H., 1863-1947; Roy, son of I. H. and M. May 10; 1883-July 23, 1901; Flora E., dau. of I. H. and M., November 25, 1884-February 18, 1885; John Thomas, 1871-1957; Eva, dau. of J. W. and L. J., died October 4, 1881, aged 12 das.; James A., son of J. W. and Lucy J. died November 20, 1892, 15 yrs., 9 mos., 7 das.; Ralph E. Bennett, 1893-1946; Lucile Sayers Bennett, 1904-1950; Isaac H., April 4, 1840-May 23, 1925; Marie, his wife, June 6, 1844-March 3, 1904.
- Bundies, Clarence, son of W. A. and L. E., September 5, 1887-July 22; 1888.
- Eroyles, Obediah, May 15, 1845-November 5, 1917; Juanita, July 30, 1901-July 10, 1927; Antoninette, April 16, 1859-March 21; 1922; Beverly, son of O. and A., September 14, 1887, aged 4 yrs., 5 mos., and 15 das.
- Burwell, Marion, May 10, 1848-July 12, 1919; Martha J., his wife, April 5, 1851-June 4, 1916; Ida Ellen, dau. of H. and Martha J., died August 15, 1886, aged 15 yrs. 11m
- Crump, Daniel J., August 9, 1842-May 29, 1926; Martha, May 5, 1855; James Calvin, born in Pike Co., Ill., December 17, 1829-January 14; 1859; Rence; dau. of D. J. and M., died October 3, 1876, aged 5 mos., 24 das.; Elizabeth, wife of R. Crump, born in Bedford Co., Va., died March 13, 1886, aged 32 years, 2 mos., 12 das.; Richard, died February 17, 1872, aged 71 years, 3 mos., 19 das.
- Clevenger, Sarah, dau. of A. and H. J., died October 18, 1863, aged 10 years, 8 mos., 2 das.
- Cornett, Nancy A., wife of J. C., April 19, 1840-November 29, 1871; Susan, wife of L. B., May 29, 1810-May 27, 1889; Inf. dau. of J. C. and M. A.
- Evans, Julia H. G., dau. of W. P. and I. P., died November 20, 1873, aged 1 year, 3 mos., 6 das.; Victoria C., dau. of W. E. and I. P., died November 13, 1873, aged 3 yr. 1, 11.
- Ebers, Sophia, October 27, 1827-June 17, 1897.
- Fields, Elhloria O., dau. of Jno. L. and Mary E., died March 4, 1888, aged 1 year, 5 mos., 4 das.; Ora N., March 7, 1881-January 24, 1902; Children of J. L. and A. L.: Infant, died February 15, 1900; Inf., died January 14; 1898, aged 4 das.; Ora N., March 7, 1881-January 24; 1902.
- Fishback, John H., 1860-1946; Alice A., 1867-19__.



Mundell

(2)

- Garrett, William, April 7, 1887, aged 66 years, 10 mos., 28 das.
Cordelia, died September 16, 1896, aged 59 yrs., 5 mos. 8
- Gable, John, died January 14, 1905, aged 81 yrs., 4 mos., 10 das
Mary A., died September 11, 1910, aged 86 yrs., 4 mos., 27
John, 1858-1919; Z., died December 15, 1892, aged 3 yrs.,
10 mos., 23 das.; Florence, June 8, 1956, aged 93 yrs.,
5 mos., 1 da.; Infant of W. E. and E. E., died March,
1881, aged 7 hrs.; Lola Alpha, dau. of W. E. and E. A.,
died November 28, 1883, aged 7 mos., 19 da.
- Hooker, John T., December 20, 1861; Hattie M., his wife, Novem-
ber 17, 1862-October 4, 1922; Mary, dau. of J. T. and
H. M., born and died February 25, 1906.
- Haggard, William R.; March 2, 1860-August 24, 1929; Melvina F.,
December 4, 1854-November 29, 1938; Charles W., July
17, 1882-July 16, 1921.
- Jones, Terrah, died November 27, 1873, aged 64 years.
- Kimbrough, Margaret Lee, July 11, 1923.
- Kimber, Ira P., son of W. T. and Susan, May 6, 1888, aged 2, 5, 15
- Kiger, Johnnie, died March 11, 1831, aged 11 years, 8 das.
- Lee, Irene Sayers, June 22, 1908-August 27, 1937.
- Light, Amy Gilmer, dau. of C. W. and E. A., June 27, 1880-8m3d
- Mullins, Thomas A., September 2, 1872-November 9, 1943; Agnes,
December 23, 1874; Priscilla C., 1847-1940.
- Maloney, Hugh S., April 2, 1938, aged 72 yrs., 7 mos., 12 das.;
Rody Jane, wife of Hugh S., died April 11, 1826, 80 yrs.
- Meyers, Nancy Vera, January 29, 1906-December 3, 1918; Ray, 1898-
1923; William A., 1854-1926; Julia A., 1866-1944.
- Murphy, William E., September 10, 1890-February 24, 1909.
- Moore, Elsie Pearl, dau. of H. C. and F. J., died January 14,
1893, aged 5 yrs., 4 mos., 5 das.; Henry, June 26, 1844-
April 30, 1914; Pernety J., his wife, born October 1,
1849; Pernety J., August 11, 1872-September 26, 1889;
Nancy J., June 22, 1880, aged 38 yrs., 11 mos., 8 das.
William, died April 16, 1892, aged 23 yrs., 11 mos., 23 das
- Mundell, Thomas E., November 26, 1846-March 15, 1936; George,
August 15, 1890-October 5, 1918; Mary F., December 24,
1866-March 1, 1936; W. A., 1878-1941; James A., Decem-
ber 4, 1851, January 6, 1916; Mary, November 17, 1855-
January 14, 1943; Children of O. H. and L. H.: Hugh,
November 12, 1903-November 12, 1903; Isel, November 12,
November 21, 1903; Mary, born and died October 6, 1902;
Infant son of J. A. and H. H., died February 1, 1885,
aged 2 mos., 1 da.; Emmaline E., died July 2, 1886,
aged 7 yrs., 3 mos., 25 das.; Hugh, died June 25, 1877
aged 73 yrs., 4 mos., 13 das.
- Pratt, Cintha A., dau. of G. and H., died April 28, 1873-1, 2, 18.
- Riddle, David Ross, March 1, 1882-; Fessie Lee, November 29,
1886-January 8, 1944; Infant of F. J. and J. W., died
March 22, 1891.



- Shafer, Frederick, September 27, 1827-September 22, 1877;
Frederick, September 27, 1828-September 22, 1877;
Sophia, his wife, October 27, 1828-June 17, 1897.
- Stone, William W., October 17, 1852-October 11, 1940; Eleanor
J., January 9, 1852-December 17, 1893; James B., Novem-
ber 27, 1856-September 5, 1928; Rebecca F., November
15, 1861; Benjamin F., September 2, 1822-September 2,
1908; Mary E., his wife, December 27, 1822-February 20,
1906; Frances E., March 13, 1816-December 11, 1892;
Frances E., son of J. S. and M. J., August 23, 1872-
September 15, 1878; F. E., March 13, 1816-December 11,
1892; Elmira E., dau. of D. E. and M. J., died June 25,
1880, aged 4 mos., 13 das.; David F., August 24, 1843-
September 25, 1923; Martha J., his wife, December 20,
1843-November 20, 1920; Edward, 1865-1937; Mary A., 1875
19; John F., 1868-1939; Nedra Ann, 1872-1952; David,
1870-1947; Ida, 1876-1950; Lora, dau. of F. F. and M. B.
March 11, 1860-October 20, 1860; Oscar S., 1876-1942;
Bellie A., 1876-19__.
- Thurlow, Dona, 1875-1900; F. M., 1873-1905; W. H., 1903-1904;
Margaret, 1848-1908.
- Woods, Mary Crump, March 30, 1840-January 6, 1913.
- Woodworth, Nesbert, son of S. and E., June 15, 1874-Nov. 2, 1878.

Hooker

- Northeast quarter of section 16, township 60, range 21, Jack-
son Township; southwest of Browning, Mo.
- Cotter, George L., 1853-1941; Rachel, 1853-1948; Infants of
G. L. and Rachel, died October 31, 1894; Henry Oscar,
April 21, 1874-April 7, 1875, son of R. H. and M.
- Deby, Arthur, 1903-1905; Frank, 1858-1904; James, 1896-1917.
- Eldridge, Vera Olene, October 4, 1912-September 2, 1913.
- Boins, D. P., 1838-1906; Rev. Jesse, died October 12, 1888,
aged 74 yrs., 2 das.
- Hooker, James T., Co. F. 23rd Vet. Vol. Inf., died March 8,
1866, aged 22 yrs., 8 das.; Clara, dau. of E. and I.
A., October 3, 1883-June 17, 1901; Enoch, March 12,
1848-July 2, 1910, Co. F., 44th Reg. Mo. Vol.; Ida,
his wife, October 15, 1853-August 27, 1934; Ada, 1879-
1946; Jeremiah, died February 14, 1893, aged 82 yrs.,
10 mos., 15 das.; Mary, his wife, August 20, 1810-
May 20, 1888.
- Herrick, James E., November 15, 1852-August 20, 1923; Nancy
E., his wife, September 15, 1857-August 8, 1921.
- Ridenour, James T., 1861-1949-Mary J., 1855-1944.
- Rooks, Sacred to the Memory of Albert Rooks, died January 26,
1899, aged 18 yrs., 11 mos., 22 das.

1. The first part of the document discusses the importance of maintaining accurate records of all transactions and activities. It emphasizes that this is crucial for ensuring transparency and accountability in the organization's operations.

2. The second part of the document outlines the various methods and tools used to collect and analyze data. It highlights the need for consistent data collection procedures and the use of advanced analytical techniques to derive meaningful insights from the data.

3. The third part of the document focuses on the role of technology in data management and analysis. It discusses how modern software solutions can streamline data collection, storage, and processing, thereby improving efficiency and accuracy.

4. The fourth part of the document addresses the challenges associated with data management, such as data quality, security, and privacy. It provides strategies to mitigate these risks and ensure that the data remains reliable and secure throughout its lifecycle.

5. The fifth part of the document concludes by summarizing the key findings and recommendations. It stresses the importance of ongoing monitoring and evaluation to ensure that the data management processes remain effective and aligned with the organization's goals.

Appendix A: Detailed description of the data collection methods used in the study. This section provides a comprehensive overview of the various techniques employed, including surveys, interviews, and observational methods, and explains how they were integrated into the overall research design.

Samples, James, January 20, 1867-July 20, 1917; Mary, his wife, died August 29, 1858.
Smith, J. H., born October 17, 1856-August 22, 1943; Ada F., his wife, January 15, 1865-June 22, 1907; Son of J. B. and F. ., died January 16, 1882; Elizabeth, wife of J. H., June 11, 1832-April 6, 1884; Joseph H., died August 21, 1903, aged 72 yrs., 4 mos.; Jennie, born June 9, 1852-September 25, 1900; Laura E. Creason, dau. of Jennie Smith, December 27, 1877-October 21, 1897; Josie Pearl, dau. of J. H. and J. Smith, died November 22, 1897, aged 7 mos., 7 das.

Calhoun

Located west of Browning, Mo., on the Mickell Farm.

Playlock, Meredith, died November 24, 1888, aged 88 yrs. 9 mos. 17 d.
Calhoun, Martha Ellen, dau. of W. and H., died February 13, 1872 aged 16 yrs., 10 mos., 3 das.; William, murdered August 27, 1864, aged 51 yrs., 8 mos., 29 das.; Charlie C., son of W. I. and H. C. died June 29, 1878, aged 2 yrs., 10 mos., 29 das.; Melvina, wife of William, died September 6, 1881, aged 63 yrs., 4 mos., 11 das.
Phillips, Charles Ernest, 1870-1926; Robert Lee, 1880-1929; Floy O., 1878-1948; Ralph E. Tribble, 1883-1947; Daisie M. Tribble, 1883-; Roy L., son of L. E. and E. J., born February 11, 1902, aged 15 yrs., 8 mo. 18 d. Peter F., son of L. E. and E. J., born March 16, 187, October 21, 1904; Lee F., 1840-1910; Elizabeth J., his wife, 1843-1913; W. J., 1867-1916.
Sturges, Nancy H., died September 17, 1894, aged 35 yrs., 4 mos. 9 Infant dau. of H. F. and F. H., died January 1, 1880.



Laid out in 1851 by Thomas S. and William G. Gooch on the southeast quarter of section 29, township 60, range 20, George Milton Gooch, son of Thomas S. was interred there in 1852, and afterward the body of John F. Gooch reposed in the same grounds.

Calhoon, Pernelia, died September 29, 1894, aged 23 years; Anna L., November 24, 1879-February 25, 1896; James O., October 18, 1845-February 4, 1914; Sarah J., his wife, September 11, 1849-February 10, 1927; Mary E., dau. of J. O. and S. J., died June 16, 1874.

Carter, Herman, son of H. F. and W. J., died June 28, 1893, aged 2 yrs., 9 mos., 10 das.; John, February 3, 1839-May 22, 1906; Sarah, his wife, January 15, 1842-June 9, 1913.

Gilmer, wife of A. L., December 8, 1881-January 28, 1920; A. L., Jr., died December, 1919.

Gooch, James W., born June 10, 1837-December 26, 1880; John W., son of J. W. and G. E., born March 27, 1874-June 18, 1875; George Milton, died May 12, 1873, aged 1 yr., 7 mos., 20 das.; Thomas S., May 3, 1810-July 31, 1873; Rachel, his wife, September 15, 1815-September 15, 1895; George Milton, son of T. S. and R. T. died May 2, 1852, aged 2 yrs., 5 mos., 5 das.; Adam T., December 7, 1845-July 11, 1887; Isaac T. April 15, 1849-February 12, 1917; Jane Riley, his wife, September 17, 1853-November 7, 1941; Susan, wife of J. H. Gooch, died October 30, 1894, aged 33 yrs., 10 mos., 16 das.; Inf. of J. H., died October 17, 1882; Inf. of H. W. and C. A., born July 12, 1882-April 22, 1883, Lizzie H., wife of J. A., March 12, 1872-December 16, 1901. Clay D., September 2, 1879-June 28, 1921; W. T., November 24, 1831-February 3, 1900; Caroline Agnes, his wife, July 22, 1838-February 27, 1923; John Franklin, February 16, 1808-December 22, 1860; Charley W., son of W. T., died October 6, 1848; Thomas H., May 15, 1844-May 21, 1898; Thomas H., Jr., 1878-1950; Charles B., 1855-1928; Lucy E., 1858-1928; James W., April 9, 1866-October 4, 1907; Malissa F., his wife, May 20, 1870-April 20, 1918; W. G., July 28, 1806-May 5, 1893; Sarah, wife of W. G., September 25, 1818-January 31, 1860; Albert D., son of W. G. and Sarah, January 3, 1855-May 26, 1851; James W., November 23, 1844-May 21, 1926; Louisanna, dau. of W. G. and S. Gooch, (Stone buried); John G., died March 28, 1895, aged 40 yrs., 11 mos., 26 das.; Nancy H., wife of J. G., died November 20, 1880, aged 34 yrs., 8 mos., 4 das.; Cora Alice, dau. of J. G. and Nancy, died February 27, 1872, aged 1 yr., 9 mos., 30 das.; Mary E., dau. of J. G. and Nancy, died March 18, 1861, aged 1 yr.; Nellie E., dau. of J. G. and Nancy, July 5, 1892-March 13, 1893; Dau. of J. G. and Nancy, August 25, 1890-May 1, 1893; Henry H., March 1, 1841-January 4, 1905; Hellen E., wife of H. H., died February 7, 1894, aged 47 yrs., 10 mos.



Gooch
(2)

- Gooch, Thomas Shelton, son of J. T. and O. A., died October 10, 1884, aged 28 yrs., 7 mos., 8 das.; William H. C., 1839-1937; Mary Ann, his wife, 1845-1904.
- Hanks, Jonah B., April 11, 1883-November 6, 1909; Andrew J., died May 23, 1883, aged 71 yrs., 3 mos., 15 das.; Susan E., wife of A. J., (No dates); Habel G., September 4, 1892-October 10, 1909; Missouri Linn, January 23, 1860-March 18, 1935; Fielden S., March 5, 1852-November 22, 1892.
- Hewins, Samuel O., died February 17, 1862.
- Robertson, Harry O., March 10, 1929.
- Shanks, John H., 1869-1945; Inf. son of W. D. and R. T., April 26, 1902-April 30, 1902.

Wesley Chapel

Located on the Schrock Farm, northeast of Purdin, Mo.

- Arnold, James E., died January 22, 1878, son of Napoleon and Lucinda, aged 5 yr., 2 mos.; Elizabeth, wife of Thomas, died May 9, 1876, aged 89 yrs., 8 mos., 17 das.
- Alexander, Sola J. son of L. G. and S. E., died August 6, 1883, aged 5 mos., 28 das.; Sarah E., wife of J. G., February 6, 1860-June 3, 1883; Stella Mae, dau. of _____, died September 5, 1878; Maggie J., dau. of _____ and Mary, died December 23, 1881, aged 3 yrs., 10 mos. Mary J., wife of _____, August 19, 1821-October 3, 1888; Eliza M., dau. of G. G. and A., died March 2, 1872, aged 2 yrs., 19 das.; William G., May 5, 1814-April 20, 1865; Infant of _____ and H. J., died 1856; Mary B., wife of G. W., September 2, 1871-March 25, 1902; William E., died August 13, 1894, aged 2y.10m.
- Albert, Newton B., son of J. and W. A., October 20, 1813-July 30, 1853.
- Bailey, John H., son of W. H. and E. H., died February 24, 1878, aged 22 yrs., 2 mos., 10 das.; Columbus A., March 25, 1848-September 11, 1884; Daniel, son of W. H. and Elizabeth M., April 25, 1836-February 19, 1858; William B., April 17, 1815-August 5, 1894.
- Beaty, Emily B., wife of William, October 23, 1808-November 29, 1862.
- Brown, Richard, son of G. A. and S., died October 18, 1910.
- Biswell, Young J., born in Randolph Co., Mo., March 28, 1842, died in Browning, Mo., April 7, 1881.
- Bussler, Rebecca, wife of A. P., March 13, 1813-February 28, 1881; Armstrong, July 12, 1817-September 24, 1881; Lucy C., dau. of _____ and L. C., February 6, 1805-February 28, 1865.



- Cokerhan, Anna L., wife of L. L., died February 26, 1862, aged 28 yrs., 10 mos., 19 das.
- Cotter, John, Co. F., 23rd Inf.; S. C., Co. 112, Calv. Ho. Vol., March 6, 1847-May 29, 1865; James Eddie, son of J. C. and J. E., February 17, 1870, aged 6 yrs., 7 mos., 3da.
- Christy, Joseph L., died September 28, 1853, aged 66 years; Francis A., died December 21, 1854, aged 4 yrs., 5 mos. 24 das.; Children of A. D. and R. A.: Ann Marie, died December 25, 1854, aged 11 yrs., 11 mos., 8 das.; Luella, died March 21, 1860, aged 3 yrs., 15 das.; Edward Bruce, died August 31, 1864, aged 2 yrs., 6mos. 20
- Dodge, Mary Agnes, dau. of G. L. and A. J., died February 28, 1880, aged 11 mos., 2 das.
- Fishback, Lnoch, February 23, 1818-May 17, 1870; Clarisa, wife of Isaac H. Faugett.
- Gibson, Ellis Wallar, son of D. G. and A. G., died March 20, 1880, aged 6 mos., 14 das.; Elakely, son of D. R. and S. F., died 1871, aged 11 mos., 20 das.; Ida Fell, dau. of D. R. and S. F., died December 5, 1874, aged 3 yrs., 5 mos., 2 das.; John Walter, son of D. R. and S. F., died October 3, 1875, aged 6 mos., 14 das.; Laura Jane, dau. of D. R. and S. F., died August 31, 1878, aged 1 yr. 3 mos.; Garbie, son of G. L. and H., February 6, 1871-August 28, 1871; Goldie, dau. of G. L. and H., October 10, 1866-September 20, 1867.
- Gartner, Mary and Clara, died in 1851, daus. of Jacob and Jane.
- Gable, Lucy Eugena, wife of John, Jr., January 7, 1865-December 30, 1895.
- Gilmer, Luella V., 1855-1901; James P., 1852-1930; Mary E., dau. of L. F. and M. L., died November 20, 1890, aged 10 mos. 6 das.; Martha S. Wampler, dau. of D. and E. Gilmer, wife of T. J. Wampler, May 8, 1856-October 30, 1890; Wesley A., March 23, 1836-October 13, 1913.
- Harvey, Children of J. H. and A. M.: George W., died April 17, 1870, aged 27 das.; Gabriel, died April 24, 1870, aged 11 yrs., 1 mos.; Alwilda V., November 7, 1863-September 8, 1866.
- Harris, Nancy L., wife of John, died February 5, 1881, 60 yr. 9m.
- Helmreich, Mary Lottie, died December 22, 1871; Henry Jasen, died December 25, 1874.
- Hawkins, America, dau. of J. H. and Hanerva, died December 13, 1888, aged 1 yr., 2 mos.; James Walter, son of J. H. and Hanerva, died January 6, 1864, aged 9 mos., 24 das.
- Irving, Rachel, wife of T. G., died November 9, 1878, 31 yr. 2, 4.
- Jones, John T., son of J. B., died August 21, 1887, aged 11 mos. Oberon, wife of James E., died June 2, 1882, aged 7 yrs. 3 mos., 10 das.; Benjamin F., died September 2, 1859, aged 6 yrs., 4 mos., 28 das.; James H., died May 15, 1904, aged 67 yrs., 2 das.



- Jenkins, David, died March 14, 1871, aged 71 yrs., 3 mos., 15 da.
 Martha, wife of D., May 28, 1802-December 2, 1867;
 Carolina F., July 11, 1814-September 12, 1838; Martha,
 wife of A. R., July 22, 1841-July 13, 1860; Willie,
 son of A. R. and M. A., April 30, 1860-July 24, 1860;
 Edwin, son of H. and G., September 23, 1874-April 5,
 1876; David W., son of H. and G., November 13, 1861-
 November 22, 1863; Flora, dau. of H. and G., November
 24, 1859-March 26, 1863; James A., son of J. C. and S.,
 February 27, 1856-November 16, 1862.
- Lefler, Inf. of C. and L., died December 25, 1832; Presley,
 son of C. and L., died March 3, 1852, aged 1 yr., 14 da.
- Lee, Bertha, died July 30, 1866, aged 10 mos. 10 das.
- Lewis, Altanay, dau. of . and I., died November 17, 1879, 1,9,11
- Loss, Meta Ann, December 19, 1860-August 30, 1863; Marcellus
 died July 31, 1873, aged 50 yrs.; Leander L., son of H. H.
 and S. E., (No date); Sally A., wife of R., May 11, 1786-
 May 3, 1865; Martha D., December 27, 1830-February 23,
 1883; Benjamin F., July 12, 1822-March 25, 1873.
- Nickell, Robert R., son of A. and L., died September 27, 1879,
 aged 21 yrs., 21 das.; Henry, August 27, 1864-October
 9, 1866; Martha Jane, wife of H. D., July 2, 1830-
 December 14, 1865; James I., died April 21, 1874, aged
 24 yrs., 3 mos., 16 das.
- Oliver, Hannah, wife of George W., April 22, 1838-March 5, 1869;
 G. W., Co. L, 23rd Ho. Vol., December 8, 1833-July 25,
 1861; Stephen L., son of G. W. and P., May 29, 1860-
 October 28, 1866; E. H. (No date on stone); Mary, wife
 of Ely H., died February 9, 1882, aged 76 yrs., 4 mos. 19
- Powell, Mary, wife of W. Y., died April 16, 1861, aged 63 yrs.,
 10 mos.; Elizabeth A., wife of D. M., November 28, 1858-
 August 16, 1880.
- Pulliam, Maggie, dau. of Thomas, died April 14, 1885, aged
 9 yrs., 10 mos.; Infant of J. T. and E. B., died Sept-
 ember 24, 1883, aged 11 mos., 2 das.; John F., October
 1, 1841-July 1, 1906; Emily E., his wife, February 3,
 1841-October 2, 1919; Elba E., son of J. H. and Ann J.
 November 1, 1902-December 18, 1903.
- Ross, Henry A., son of J. and D., July 11, 1807, November 23,
 1876; Dorothy Jane, wife of Jacob, May 31, 1848-October
 11, 1868; Jane, wife of Jacob, June 19, 1816-July 6, 1869.
- Street, Elizabeth, wife of D. A., died September 3, 1898, aged
 40 yrs., 7 mos., 3 das.
- Seaman, Rhoda A., wife of J. C., aged 62 yrs., died October 28,
 1875; Jane, wife of Jonah, died August 20, 1865, aged
 71 yrs., 11 mos., 23 das.
- Southerland, William D., January 19, 1825-March 2, 1915;
 Mary A., his wife, November 22, 1837-June 13, 1876;
 William, died January 10, 1877, aged 77 years;



Southerland, Jane, wife of W. P., died July 25, 1874, aged 73 yrs., 9 mos., 3 das.; John, died October 20, 1874, aged 45 yrs., 3 mos., 7 das.; Mary, wife of John, died June 30, 1880, aged 43 yrs., 6 mos., 23 das.; William E., son of W. J. and R., died June, 1887, aged 2 yrs., 2 mos.

Schrock, Alonso G., son of D. G. and S. L., died September 2, 1876, aged 2 yrs., 7 mos., 26 das.; George Perlic, died January 26, 1888, aged 9 mos., 25 das.; Infant son of A. J. and L. J., May 11, 1873-June 22, 1873; Price V., son of Joseph and Mary, died April 18, 1879, aged 17 yrs., 1 mo., 2 das.; Grintha, dau. of Joseph and Mary Schrock, died August 22, 1869, aged 14 yrs., 24 das.; Joseph, died June 30, 1892, aged 72 yrs., 10 mos., 23 das.; Mary, wife of Joseph, died September 3, 1901, aged 72 yrs., 3 mos., 3 das.; Math, died July 29, aged 91 yrs., 10 mos., 20 das.; Mary, wife of A. J., died December 14, 1823, aged 39 yrs., 10 das.; Andrews J., died February 5, 1903, aged 78 yrs., 16 das.

Singler, Flora, wife of William T., died June 21, 1875, aged 26 yrs., 3 mos., 26 das.

Venable, Sarah S., died April 3, 1867, aged 53 yrs., 2 mos., 23 das.; Children of A. M. and S. S.: Mary E., died August 21, 1859, aged 9 yrs., 6 mos., 21 das.; Penja, died September 27, 1853, aged 15 mos., 13 das.

Williams, Daniel, May 17, 1813-February 25, 1890; Charles Williams, died September 1876, aged 53 yrs.; Mary, wife of Charles, died February 13, 1878, aged 28 yrs., 3 das.; Stephen E., son of G. L. and S. L., died September 1, 1870, aged 10 mos., 28 das.

Wolfsbaur, Elifera, dau. of Joseph and Lucinda, died November 20, 1882, aged 3 yrs., 5 mos., 6 das.; Clementean, dau. of Joseph and Lucinda, November 30, 1882-March 12, 1884.

P i r e e

Located northwest of Purdin, Missouri

Werrick, Benjamin, April 1, 1857, aged 42 yrs.; Sarah, March 20, 1820-January 24, 1869; Mary, July 16, 1849-November 25, 1865.

Wier, James, died December 25, 1858, aged 45 yrs., 11 mos.; Filicia G., February 11, 1816-May 28, 1892; Richard, died May, 1842, about 65 yrs.; Tennessee, dau. of J. and M., died March 1, 1844, aged 14 yrs.; Lucinda, wife of Richard, died April 3, 1854, aged about 20 yrs.; Elizabeth, wife of Ward, March 6, 1875-June 1, 1909; David G., January 10, 1840-October 6, 1881, Emily A., his wife, April 1, 1850-June 29, 1887; Gertrude, dau. of D. C. and Emily, December 20, 1875-February 1, 1882.

Worbeber, Eleanor E., wife of V., died February 15, 1890, aged 63 yrs., 5 mos., 21 das.; Werdeman, died January 10,



Located west of Lima, Mo.

- Benefiel, Mary B., wife of J. W., May 8, 1895, aged 45 yrs.,
10 mos., 11 das.; J. W., February 16, 1880, aged 41
yrs., 1 mo., 5 das.; Rosa A., wife J. T., September
15, 1881, aged 23 yrs., 11 mos., 5 das.; Elizabeth,
died June 22, 1903, aged 33 yrs., 1 mos., 5 das.;
Children of J. W. and S. A.: Samuel W., June 4, 1886-
aged 24 yrs., 10 mos., 18 das.; William F., March 15,
1881, aged 21 yrs., 8 mos., 12 das.; Son, February 2,
1880, aged 2 yrs., 1 mo., 4 das.; John C., January 21,
1880, aged 10 yrs., 1 mo., 28 das.; Mary A., died
January 13, 1880, aged 14 yrs., 22 das.
- Brotherton, Lola J., wife of R. F., May 12, 1906, aged 39 yrs.,
7 mos., 22 das.; Birdie A., wife of R. F., died
January 7, 1901, aged 25 yrs., 28 das.
- Buckman, Minnie Grace, dau. of Jesse and Mary, October 8, 1881,
aged 9 yrs., 6 mos., 1 da.; Jesse L., February 12, 1834-
December 19, 1886; Polly M., his wife, August 16, 1834-
July 13, 1915; John T., December 17, 1857-January 19,
1905; Jesse L., September 20, 1896-June 18, 1918;
Ray E., Inf. son of E. L. and Clara, died March 15,
1901, aged 6 mos., 15 das.; Edgar L., 1866-1930;
Clara L., 1869-1941
- Branson, Anna Belle, wife of Albert L., died January 18, 1889,
aged 22 yrs., 8 mos.; John F., September 14, 1857-July
31, 1888; Kate H., his wife, May 12, 1859; John,
September 21, 1896-aged 62 yrs., 3 mos., 27 das.; Ann
Marie, wife of John, May 17, 1836-January 10, 1919.
- Parker, Fannie C., dau. of A. B. and F. L., February 11, 1886,
aged 5 yrs., 5 mos., 16 das.; Margaret, October 26,
1805-September 6, 1887.
- Furris, John B., 1833-1881; Nancy J., his wife, 1835-1927;
Inf. of C. R. and A. J., died July 24, 1887; Emma J.,
wife of C. R., November 6, 1865-March 18, 1891; Robert
T., 1835-1911; Louisa A., 1839.
- Cuberly, Mary A., wife of R. H., died April 17, 1906, 31 yrs.,
8 mos., 4 das.
- Curtis, Lucille F., dau. of J. L. and H. A., December 16, 1897-
December 21, 1897.
- Couch, Inf. of Isaac S. and Haruda; Isaac S., November 20, 1858-
January 30, 1908; Haruda, wife of I. S., May 29, 1891,
aged 35 yrs., 2 mos., 17 das.
- Donley, Henry C., 1844-1931; Frances E., wife of H. C., died
December 11, 1898, aged 49 yrs.; James B., February 24,
1898, aged 2 yrs., 5 mos., 17 das.
- Ferguson, John F., June 12, 1839-May 28, 1905; Children of J.F.
and J.: Jefferson, died June 27, 1883, aged 18 yrs.,
2 mos., 28 das.; Maude E., 1886-1887
- Fetty, Inf. son of E. C. and C., died August 20, 1886
- Martens, Inf. son of Walter and Faye, February 11, 1919.
- House, Inf. of D. H. and Avis, 1925.
- Ryker, Margaret, October 26, 1805-September 6, 1887.



Graveyard located just north of the county line, in Sullivan County, on the Noel Bennett Farm, east of Erowning, Mo.

Hairs, Van. E., born August 14, 1859-September 27, 1894;
Rachel Susannah, born November 30, 1842-November 8, 1911.
Thomas, born May 12, 1806, aged 70 yrs., 4 mos., 60 das.

Graveyard located just north of the county line, in Sullivan County, on the Clayton Warren Farm, north of Erowning, Mo.

Brookshier, William, born June 2, 1811-February 20, 1889;
Sarah, his wife, February 25, 1811-March 8, 1880;
William Jasper, October 16, 1832-November 2, 1918;
Malinda, his wife, April 29, 1833-August 27, 1869;
Infant of W. J. and M., died April 8, 1869; Susan
E., dau. of W. J. and M., died August 9, 1869, aged
10 yrs., 5 mos., 6 das.; Orpha A., dau. of W. J. and
M., died January 30, 1871, aged 16 yrs., 10 das.
Fundies, Henry A., March 27, 1833-September 16, 1912; Sarah E.,
his wife, died May 21, 1867; Malinda, his wife, Septem-
ber 5, 1831-March 21, 1880; Malinda E., wife of
Henry, died March 21, 1880, aged 55 yrs., 8 mos., 25 da
Dodson, Rachel E. Fundies, wife of J. C., 1868-1890.
Huss, Minnie J., dau. of S. J. and S. E., died July 6, 1880,
aged 11 yrs., 8 mos., 26 das.; Lunan, dau. of S. J. and
S. L., died April 21, 1880, aged 4 mos., 13 das.; Lucy
E., dau. of S. J. and S. E., died August 11, 1880, aged
2 yrs., 6 mos., 11 das.
Stephenson, Howard, son of F. R. and J., born May 20, 1880-May
31, 1880; Jennie, wife of F. R., October 6, 1868-
September 8, 1888.

Footstones: H. J. F.
M. D.
J. A. E.
S. E.

Locust Valley

Located north of the county line in Sullivan County, west of Erowning, Mo.

Farrows, Gerald Hugh, 1930-1931; George L., 1898-1948; Lillian
I., 1901-19__.
Framing, Edmond A., February 2, 1849-September 10, 1946;
Judith, September 17, 1846-February 8, 1933.
Faker, Albert W., 1883-1956; Myra A., 1884-1949
Furwall, John, 1872-1949
Frassfield, J. Warner, 1884-1948-Essie A., 1886-19__
Greason, Beverly D., 1886-1956; Elizabeth, 1893-19__; Truman J.,
January 9, 1921-July 21, 1945.
Graves, Alice, 1879-19__, Malena E., 1883-1930.



- Hagyard, James Loren, July 22, 1891-June 9, 1935; Laura Ellen, May 29, 1892-December 24, 1931.
- Hooker, George E., 1884-1932; Mary, his wife, 1886-1943; Stephen Rex, April, 1947.
- Jacobs, James, 1851-1945; Mary, 1846-1936.
- Jennings, Cleve, 1884-1942; Bertha J., 1890-19__.
- Johnson, Clay Elmer, died October 26, 1953, aged 77 yrs., 5 mos. 12 das.; Ivy, (No dates)
- Lambert, Carl F., 1939-1941; Darlene L., 1941; Lila C., 1934-1936.
- Lay, Stephen J., 1857-1935; Malissa J., 1856-1939.
- Longwell, Anna L., 1868-1945.
- Lanc, Eva, 1887-1955; I. I., 1887-1951.
- Moore, Richard Eugene, 1948-1954; Richard L., April 3, 1863-April 2, 1947; Evelina, January 11, 1868-January 25, 1939.
- Nickell, September 23, 1952-December 2, 1952.
- Newby, Julia Ann, May 19, 1865-January 26, 1945.
- Quigley, Jacob B., 1893-; Alpha H., 1892-1939; Gaylord C., April 19, 1911-January 28, 1941; Kathleen, April 13, 1915-; Faby Quigley, son of J. D. and Jean, died April 23, 1953.
- Riddle, James L., 1864-1936; Pertha I., 1875-1953;
- Rinchart; Jimmie Leroy, 1940-1948
- Shepherd, Edgar, 1887-1952; Lydia, 1892-
- Schrock, Chester H., 1895-19__; Fessie L., 1895-1950
- Skeen; Vickie Sue, March 17, 1948-March 24, 1954.
- Thorn, Alden H., April 18, 1886-June 10, 1943.
- Warren, Hugh A., 1869-1953; Eva, 1876-19__.

Graveyard located on east of Browning, Mo., in Sullivan County.

- Curtis, Tommy E. L., August 28, 1877, aged 3 mos., 28 das.
- Head, Rebecca J., born December 21, 1864-January 25, 1932; Daniel A., November 13, 1846-December 17, 1918; Rebecca, his wife, born November 13, 1865; John, son of b. a. and R. J., died August 16, 1899, aged 3 yrs., 8 mos., 27 das.; Elizabeth, wife of Daniel, died September 25, 1870, aged 22 yrs., 7 mos., 4 das.; James, husband of Lucinda E., died August 15, 1875, aged 51 yrs., 8 mos., 18 das.
- Froyles, Synthia Ann, died July 11, 1874, aged 22 yrs., 17 das.
- Livens, Minerva R., wife of Charles, died March 28, 1892, a. 23; Anics, son of C. and M. E., died January 8, 1892, 3m 3d.
- Morris, Mary E. and her infant, wife and dau. of John J. Morris, died September 3, 1871, aged 20 yrs., 10 mos.

